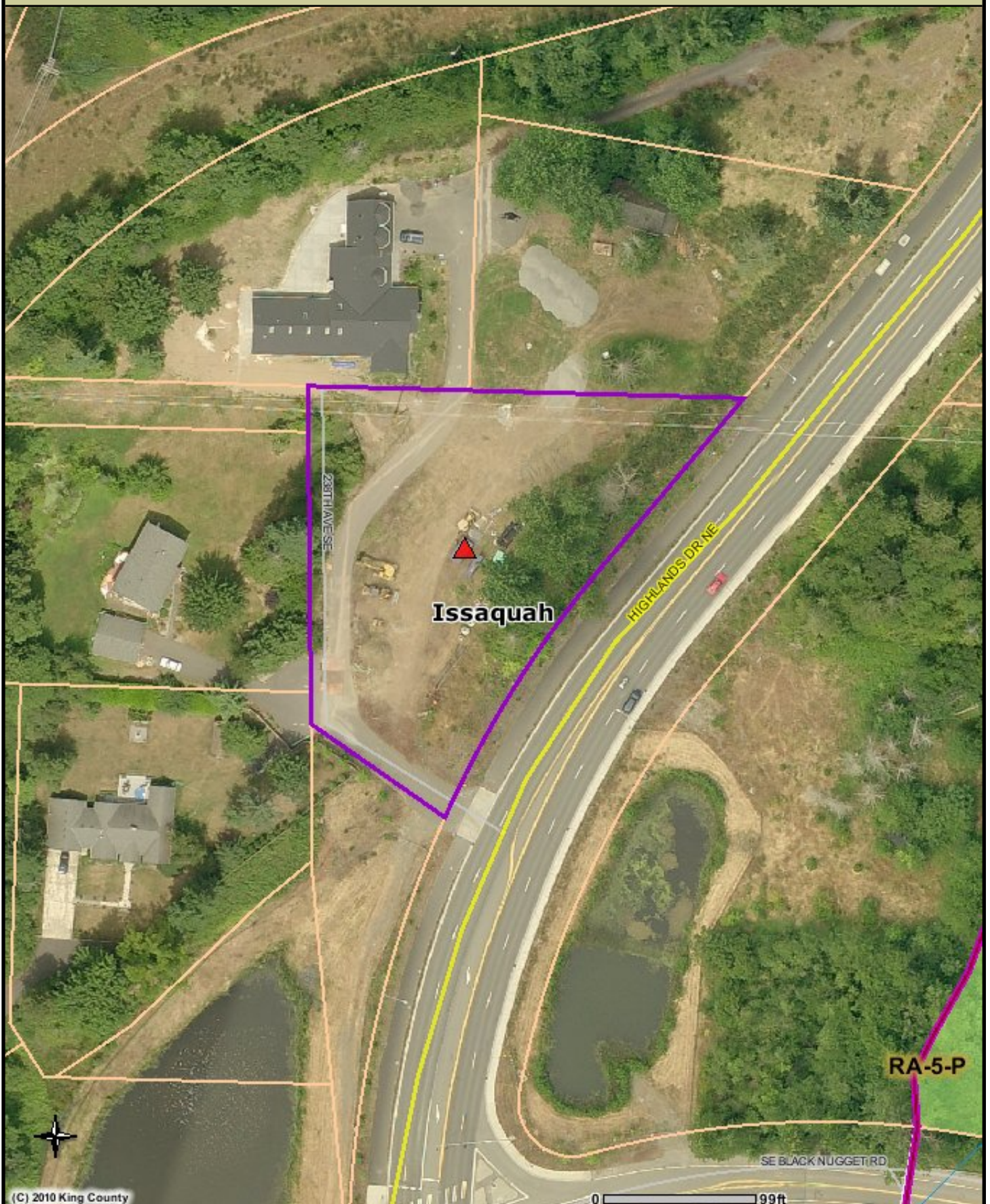


THE HIGHLANDS DRIVE LOT - PARCEL VIEW



(C) 2010 King County

The information included on this map has been compiled by King County staff from a variety of sources and is subject to change without notice. King County makes no representations or warranties, express or implied, as to accuracy, completeness, timeliness, or rights to the use of such information. This document is not intended for use as a survey product. King County shall not be liable for any general, special, indirect, incidental, or consequential damages including, but not limited to, lost revenues or lost profits resulting from the use or misuse of the information contained on this map. Any sale of this map or information on this map is prohibited except by written permission of King County.

Date: 7/5/2010

Source: King County iMAP - Property Information (<http://www.metrokc.gov/GIS/iMAP>)



King County

THE HIGHLANDS DRIVE LOT - PARCEL VIEW



Highlighted Feature



County Boundary



Mountain Peaks

Highways



Forest Production District Boundary



Agricultural Production District Boundary



Urban Growth Area Line



Incorporated Area

Streets



Highway



Arterials



Local



Lakes and Large Rivers



Streams



Tribal Lands

Legend



Parcels



Parks

Unincorporated KC Zoning



A-10 - Agricultural, one DU per 10 acres



A-35 - Agricultural, one DU per 35 acres



F - Forest



M - Mineral



RA-2.5 - Rural Area, one DU per 5 acres



RA-5 - Rural Area, one DU per 5 acres



RA-10 - Rural Area, one DU per 10 acres



UR - Urban Reserve, one DU per 5 acres



R-1 - Residential, one DU per acre



R-4 - Residential, 4 DU per acre



R-6 - Residential, 6 DU per acre



R-8 - Residential, 8 DU per acre



R-12 - Residential, 12 DU per acre



R-18 - Residential, 18 DU per acre



R-24 - Residential, 24 DU per acre

(cont)



R-48 - Residential, 48 DU per acre



NB - Neighborhood Business



CB - Community Business



RB - Regional Business



O - Office



I - Industrial



Other

2007 Color Aerial Photos (6in)

2007 Color Aerial Photos (12in)

The information included on this map has been compiled by King County staff from a variety of sources and is subject to change without notice. King County makes no representations or warranties, express or implied, as to accuracy, completeness, timeliness, or rights to the use of such information. This document is not intended for use as a survey product. King County shall not be liable for any general, special, indirect, incidental, or consequential damages including, but not limited to, lost revenues or lost profits resulting from the use or misuse of the information contained on this map. Any sale of this map or information on this map is prohibited except by written permission of King County.

Date: 7/5/2010

Source: King County iMAP - Property Information (<http://www.metrokc.gov/GIS/IMAP>)



King County