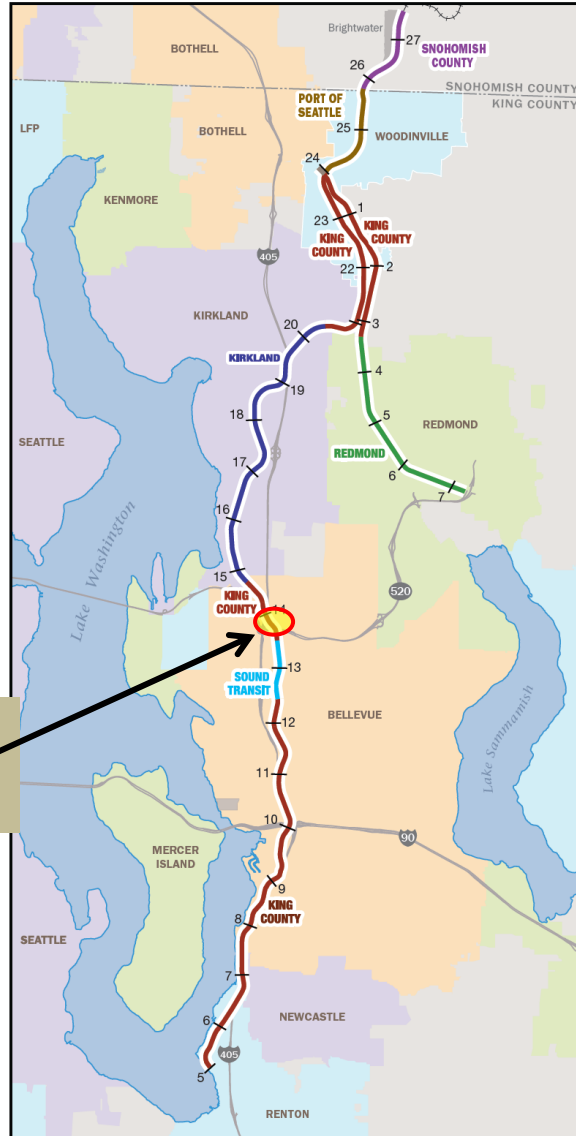


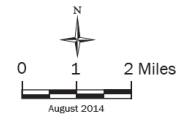
# Eastside Rail Corridor (ERC)



Approximate length, location, and type of property interests

- King County
- Sound Transit
- Port of Seattle
- Redmond
- Kirkland
- Snohomish County
- Freeway
- Lake
- Mileposts on Mainline or Spur

Northup Way Pedestrian Bridge Project Location

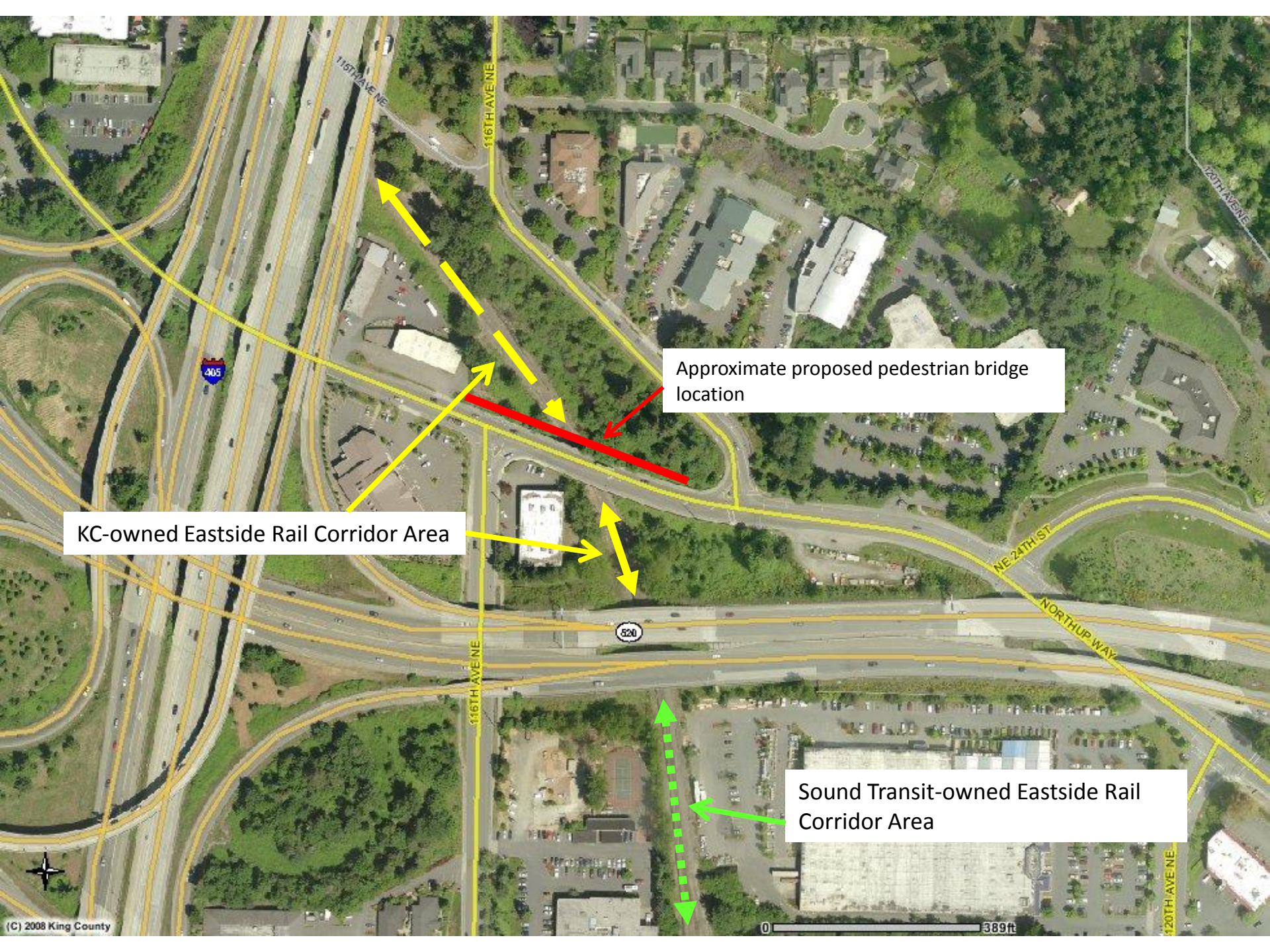


Note: Width of trail is exaggerated for information display purposes.

The information included on this map has been compiled by King County staff from a variety of sources and is subject to change without notice. King County makes no representations or warranties, express or implied, as to accuracy, completeness, timeliness, or rights to the content of such information. This document is not intended for use as a survey product. King County shall not be liable for any personal, special, or consequential damages, including, but not limited to, lost revenues or lost profits resulting from the use or reliance on the information contained on this map. Any part of this map or information on this map is prohibited except by written permission of King County.

File: 1408\_4251m ERCmapTOUR-8.5x11.ai





Approximate proposed pedestrian bridge location

KC-owned Eastside Rail Corridor Area

Sound Transit-owned Eastside Rail Corridor Area