

2019

# ANNUAL REPORT

Thomas Hitoshi  
Pruiksmā. *A Thousand  
Thanks: The Gift  
of Sadako and Her  
Cranes*, © 2018.  
Photo: Michelle Bates.



CULTURE

# INTRODUCTION

## THE LISTENING YEAR

At 4Culture, 2019 was the year of markers, post-its, carpool, easel pads, and nametags. It was the year of libraries, coffee shops, and community centers; long-time partners and new friends. It was the listening year.

As part of our King County Cultural Health Study, we visited more than 40 communities to hear about what's working and what's not when it comes to culture. A series of focus groups with stakeholders of all kinds – nonprofit organizations, artists, board members, elected officials, and more – formed the foundation for our new, 3-year strategic plan. We dug into the findings and recommendations shared by King County's 4Culture Task Force, themselves the result of a year of discussion, evaluation, and listening. And, throughout these major initiatives, ongoing grant workshops and outreach events saw us on the move daily.

What did we learn and where will it take us? Read on to find out how every one of our departments is responding to what we heard from community, and how this will fuel long-term growth.

### COMBINED PROGRAM GRANTS

#### EQUIPMENT

applicants / 114  
awards / 48  
awarded / \$280,396

#### OPEN 4CULTURE

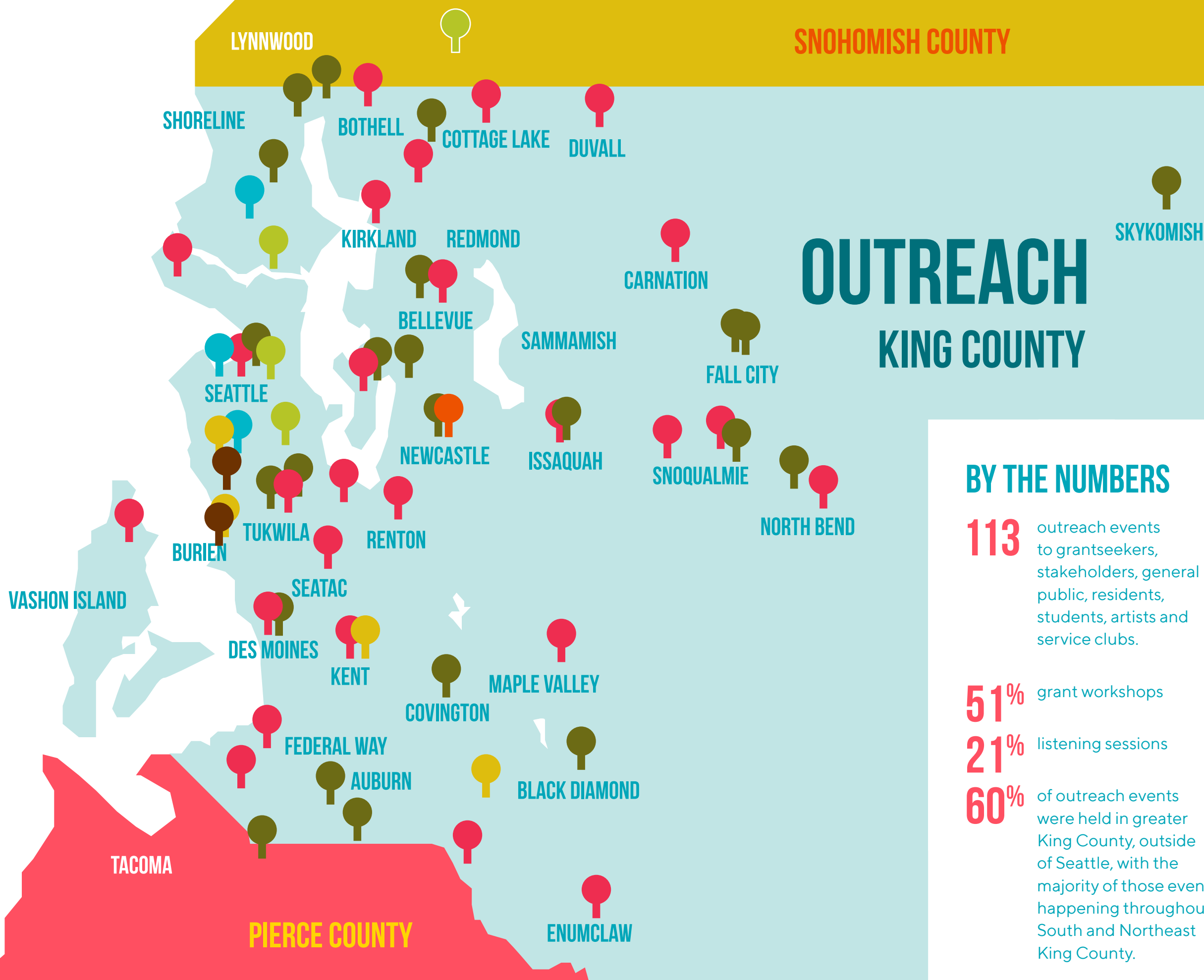
applicants / 38  
awards / 29  
awarded / \$43,500

#### COMMUNITY 4CULTURE

applicants / 2  
awards / 2  
awarded / \$40,000



Quenton Baker interviewing Hanif Abdurraqib at Town Hall, © 2019, Seattle Arts and Lectures. Photo: Libby Lewis.



# OUTREACH KING COUNTY

## BY THE NUMBERS

**113** outreach events to grantseekers, stakeholders, general public, residents, students, artists and service clubs.

**51%** grant workshops

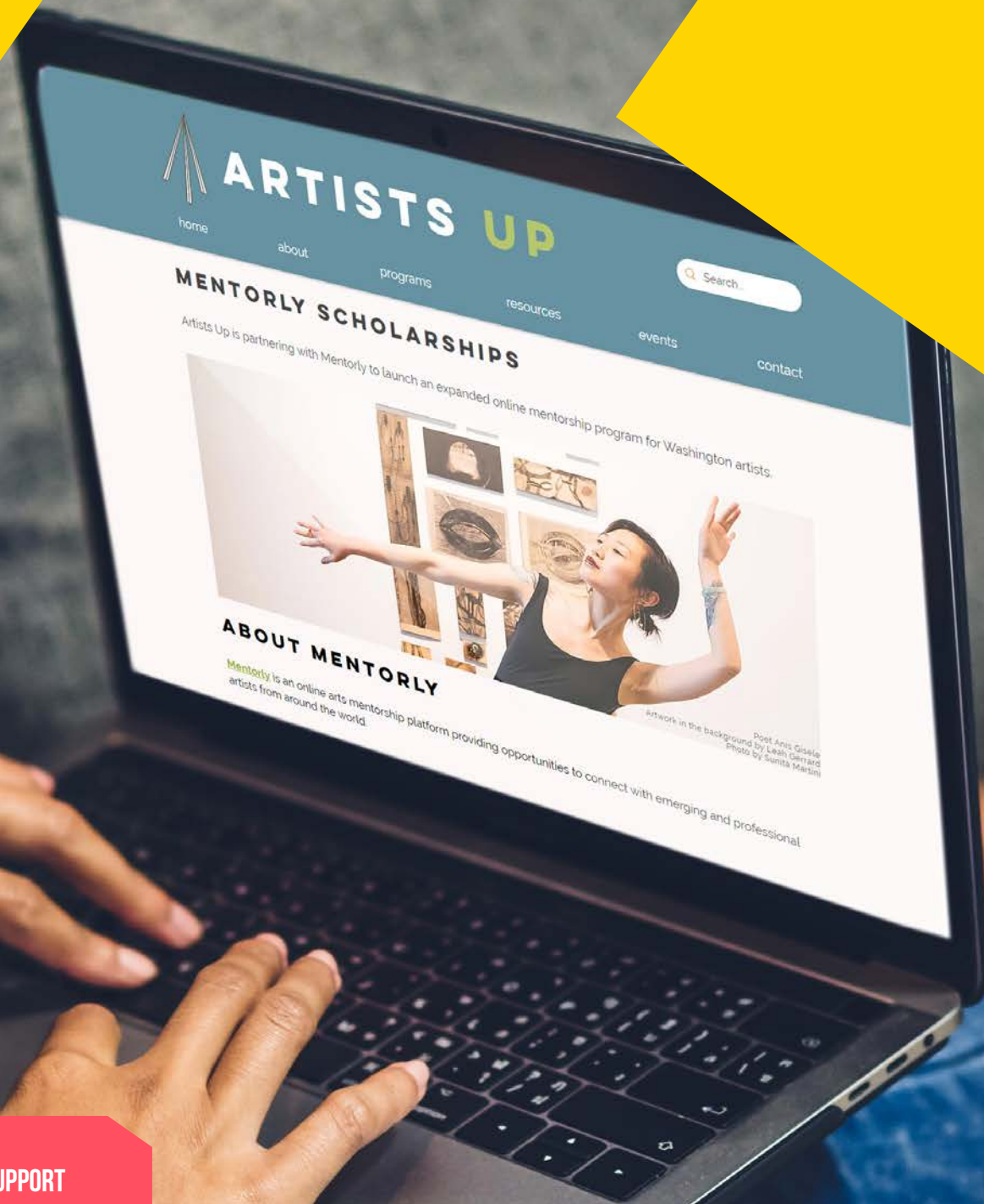
**21%** listening sessions

**60%** of outreach events were held in greater King County, outside of Seattle, with the majority of those events happening throughout South and Northeast King County.

## OUTREACH EVENTS

By Primary Audience

- Grantseekers
- Stakeholders
- General Public
- Residents
- Students
- Artists
- Service Clubs



## ARTS AWARDS

### PROJECTS: INDIVIDUALS

applicants / **232**  
awards / **80**  
awarded / **\$490,000**

### PROJECTS: GROUPS

applicants / **105**  
awards / **51**  
awarded / **\$265,500**

### EMERGENCY/UNFORESEEN OPPORTUNITIES

awards / **6**  
awarded / **\$65,349**

### SUSTAINED SUPPORT

applicants / **386**  
awards / **368**  
awarded / **\$2,021,250**

### ARC ARTIST FELLOWSHIP

applicants / **92**  
awards / **5**  
awarded / **\$60,000**

### CREATIVE CONSULTANCIES

applicants / **21**  
awards / **11**  
awarded / **\$155,000**

# ARTS

Artists Up, our joint effort with the City of Seattle Office of Arts & Culture and ArtsWA, has centered the needs of artists of color in its work since 2012. This year, Artist Up expanded their approach to both partnership and responsiveness through an innovative new offering: web-based artist mentorships.

By joining with Mentorly, an artist-built online platform that facilitates mentor relationships through video conference sessions, Artist Up is amplifying the voices of artists of color in a new way. Leveraging years of research, strong relationships with communities of color, and funding from three agencies against a powerful technological tool like Mentorly puts power in the hands of artists. The program provides a platform for artists from across Washington to forge connections on their own terms. We look forward to seeing what comes from these partnerships!

Artists Up Mentorly homepage containing photo of poet Anis Gisele with artwork by Leah Gerrard, © 2019, 4Culture. Photo: Sunita Martini.

# HERITAGE

In order to better meet the needs of its constituents in 2019, our Heritage team reimagined two of its most basic points of connection: workshops and web presence.

Our free workshops roll out with each of our grants—it gives applicants a chance to get information straight from the 4Culture staffers who know the grants best. Heritage expanded on this idea by adding an early-bird workshop to the schedule. Held on November 12—well ahead of a new season of deadlines—at the Highline Heritage Museum, it gave interested folks more time to prepare ideas and meet with others in the field. It also gave them a view of the entire year of Heritage funding opportunities, allowing for better planning.

We also launched the Heritage Field Resources webpage. After years of fielding phone calls and emails from heritage practitioners asking about a wide range of field-related issues, we compiled knowledge and resources into one location for increased accessibility. An extensive user experience study helped tailor it all to best suit the needs of seasoned professionals and curious cultural doers alike.



**HERITAGE AWARDS**

**HERITAGE PROJECTS**  
applicants / 76  
awards / 39  
awarded / \$244,807

**COLLECTIONS CARE**  
applicants / 35  
awards / 22  
awarded / \$125,996

**EMERGENCY/UNFORESEEN OPPORTUNITIES**  
awards / 1  
awarded / \$7,500

**SUSTAINED SUPPORT**  
applicants / 51  
awards / 51  
awarded / \$412,500

**T.I.P.S. MINI GRANT**  
applicants / 4  
awards / 4  
awarded / \$6,000

Megumi Nagata giving instructions for Heritage Speed Dating at the Preseason Grants Workshop, © 2019, 4Culture.



# PRESERVATION

In a region where development and historic preservation are often pitted against each other, our Preservation department is helping chart a different path. Led by an advisory team of representatives from 4Culture, King County’s Historic Preservation Program, the Washington Trust for Historic Preservation, and Historic Seattle, the Preservation Action Fund represents a new model for saving historic properties.

Equipped with a pool of funds and the team’s combined technical know-how, the PAF makes space for historic properties in the real estate market. Endangered historic buildings within King County but outside Seattle of all kinds—residential, commercial, agricultural, or institutional—can be purchased, rehabbed, and reactivated for ongoing use. This year, the PAF made its first purchase: the Ronnei-Raum House in Fall City. The cottage, built in 1904, was for several decades used to house the caretakers of the Fall City Masonic Lodge, which sits next door. The location provides a unique opportunity for public education about preservation in rural King County. When the project is completed and the property is sold, the proceeds will fund the next project.

## PRESERVATION AWARDS

### EMERGENCY/UNFORESEEN OPPORTUNITIES

awards / 1  
awarded / \$10,000

### PRESERVATION PROJECTS

applicants / 16  
awards / 11  
awarded / \$92,100

### LANDMARKS CAPITAL

applicants / 36  
awards / 14  
awarded / \$266,261

### SUSTAINED SUPPORT

applicants / 25  
awards / 25  
awarded / \$113,250

Ronnei-Raum House, © 1940, Washington State Archives, Puget Sound Regional Branch. Photographer unknown.

# PUBLIC ART

Our award-winning Public Art team has a long history of positioning artist vision at the center of public life in King County. In a rapidly evolving world, that means commissioning art that speaks to the ways in which our county is working to adapt and change. This year, one project typified that ethos.

The result of a first-time collaboration between 4Culture and the King County Department of Transportation Marine Division, Leo Berk's *Claim Stakes* is an essential part of the visitor experience at the new King County Passenger Ferry Terminal at Seattle's Colman Dock. The new facility prioritized ADA improvements, minimized impact to marine mammals, and earned Platinum certification under the King County Green Building Program—and Berk's piece sits at the nexus of these critical improvements. Passengers come and go through a series of redwood stanchions, stained to reference tidal marks, and blue nautical rope, gently curves to mimic the waves of Puget Sound. It's a welcoming gateway and a visual celebration of a uniquely Northwest journey.

## STATISTICS

- **91 artworks** by **40 artists** at the Children and Family Justice Center (CFJC)
- **7 New Works:** Permanent murals at the CFJC, *Claim Stakes* at the King County Passenger Ferry Terminal, and *Picturing Trails*, a photographic exploration of King County trails.

Leo Saul Berk, *Claim Stakes*, 2019. Stained redwood and polyester rope. King County Water Taxi terminal, Seattle, WA. King County Public Art Collection. Photo: Joe Freeman.



Ryna Frankel. *Hold Me, Touch Me*, 2019. Installation at Gallery 4Culture. Photo: Joe Freeman.

# LOOK AHEAD

More than ever, we believe in the power of listening and planning.

Listening broadens our vision. The communities of King County who took the time to thoughtfully answer our questions and share their honest opinions have unquestionably strengthened our work. Through them, we gained a clearer picture of how we can best serve King County.

## STRATEGIC PLANNING

Planning is an investment in our future. In 2020, we're synthesizing and shaping what we've learned, and we'll move forward with a new strategic plan that has the voice of our communities at its center.

## COVID-19 RESPONSE

The COVID-19 crisis occurred just as we were wrapping up production of this report. It has deeply changed our world and has been heartbreakingly hard on the King County cultural community. We pivoted our focus to respond to the needs of our community through a Relief Fund program and we hope to provide community cohesion in a time of social distancing. Our Strategic Planning work will continue with the addition of a COVID-19 Response Strategy. As 2020 progresses, this strategy will allow us to do everything we can to help our sector recover and thrive as our new reality beings to take shape.



# VOLUNTEERS

## BOARD MEMBERS

Heather Trescases / **President**  
 Chris Moore / **Vice President**  
 Felicia Gonzalez / **Secretary**  
 Greg Beams / **Treasurer**  
 Mitch Shepherd /  
**Member-at-Large**  
 Jeanne Burbidge  
 Khazm Kogita  
 Peter Kwon  
 Frank Martin  
 Vivian Phillips  
 Ana Pinto di Silva  
 Natasha Rivers  
 Tracey Wickersham  
 Shari Winstead

## EX-OFFICIO MEMBERS

Rod Dembowski /  
**King County Councilmember**  
 Larry Gossett /  
**King County Councilmember**  
 Joe McDermott /  
**King County Councilmember**  
 Jennifer Meisner  
 Brian J. Carter

## ADVISORY COMMITTEES

### Art

Gabriela Denise Frank  
 Bernadine Griffin  
 Joshua Heim  
 Eben Pobee  
 A.C. Petersen  
 Shari Winstead

### Heritage

Cassie Chinn  
 Phyllis Grant  
 Seth Margolis  
 Eric Nelson  
 Ruth Pickering  
 Nancy Salguero McKay  
 Heron Scott  
 Heather Trescases

### Preservation

Toni Azzola  
 Justin Ivy  
 Claudia Kiyama  
 Erica Maniez  
 Frank Martin  
 Cary Westerbeck  
 Eugenia Woo

### Public Art

Lesley Bain  
 Saul Becker  
 Leo Berk  
 Kamari Bright  
 Janet Galore  
 Maria Lau Hui  
 Keith McPeters  
 Michelle de la Vega  
 Tracey Wickersham

Shermona Mitchell performing  
 in *White*, © 2019, Theatre22.  
 Photo: Brett Love.

## FINANCIALS

### REVENUES AND OTHER SOURCES

	2019	2018	2017
Lodging Tax Revenue <sup>(1)</sup>	—	—	—
King County Public Art Revenue	\$6,887,039	\$681,075	\$4,335,890
King County Appropriations	\$3,145,672	\$3,638,576	\$8,376,414
Advances from King County	\$3,000,000	—	—
Public Art Consulting Revenue	\$161,623	\$90,781	\$70,936
Investment Earnings	\$1,088,694	\$874,812	\$583,765
Miscellaneous Other	\$133,020	\$419,819	\$272,223
<b>TOTAL REVENUES <sup>(2)</sup></b>	<b>\$14,416,048</b>	<b>\$5,705,063</b>	<b>\$13,639,228</b>

### EXPENDITURES AND OTHER SOURCES

	2019	2018	2017
Arts and Heritage Grant Programs	\$8,688,285	\$7,750,947	\$8,002,159
Public Art Projects	\$2,143,067	\$2,107,353	\$1,945,262
Building for Culture Facility Investment Program	\$2,955,492	\$3,638,576	\$5,931,414
Building for Equity Facility Investment Program	\$3,998,224	—	—
Debt Service <sup>(3)</sup>	\$2,168,245	\$2,170,948	\$2,166,450
Management and General Supporting Activities	\$682,164	\$699,369	\$615,896
<b>TOTAL EXPENDITURES AND OTHER USES <sup>(2)</sup></b>	<b>\$20,635,477</b>	<b>\$16,367,193</b>	<b>\$18,661,181</b>

### FUND BALANCES

	2019	2018	2017
General Fund	\$2,682,680	\$3,743,719	\$4,705,572
Lodging Tax Special Revenue Fund	\$5,743,538	\$6,568,389	\$5,777,476
1% for Art Special Revenue Fund	\$11,700,856	\$6,418,663	\$6,994,987
Cultural Special Account Fund	\$16,511,042	\$26,126,774	\$36,041,640
<b>TOTAL FUND BALANCES</b>	<b>\$36,638,316</b>	<b>\$42,857,545</b>	<b>\$53,519,675</b>

#### NOTES

2019 financial information is based on unaudited fund financial statements. Requests for the most recent complete audited financial report should be addressed to 4Culture's finance department at 4Culture, 101 Prefontaine Place S, Seattle, WA 98104.

<sup>(1)</sup> Current legislation temporarily discontinues the use of lodging tax receipts for cultural purposes in King County until 2021. The Cultural Special Account is the designated source of funds for arts and heritage grant programs through 2020.

<sup>(2)</sup> Total revenues and expenditures differ on an annual basis due to timing factors in the inflows and outflows of the various programs' financial resources.

<sup>(3)</sup> Required payments to King County for principal and interest on County debt issued for arts and heritage cultural facilities grants prior to the creation of 4Culture and for County debt issued for the Building for Culture program.

Hernan Paganini. *Stormwater Artist In Residence: Messages to Puget Sound*, 2019. Workshop with the Duwamish Valley Youth Corps.  
Photo: Timothy Aguero Photography.