

2025 STRATEGIC CLIMATE ACTION PLAN



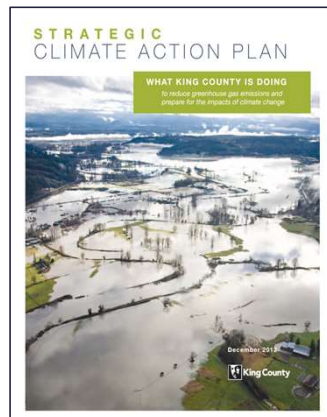
WHAT IS THE SCAP?

The SCAP is both a long-term plan and 5-year roadmap for County climate action, integrating climate change into all areas of County services, operations, and work with King County cities, partners, communities, and residents.

- **Fulfills King County Code requirements**, which require the County to establish long-term targets and update the plan every 5 years
- **Outlines and informs priorities and commitments** for climate action for decision-makers, employees, partners, and for King County communities
- **Sets performance measures** to track progress and create accountability across every agency in King County

A HISTORY OF CLIMATE LEADERSHIP

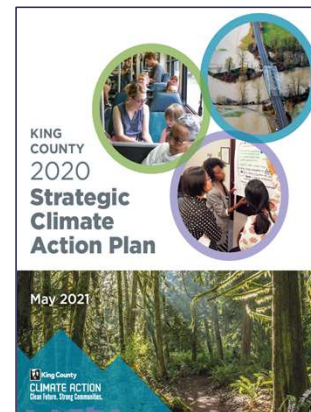
The SCAP has been described as one of the most ambitious climate action plans in the United States and was awarded the most equitable climate plan by the U.S. Federal Transit Administration in 2022.



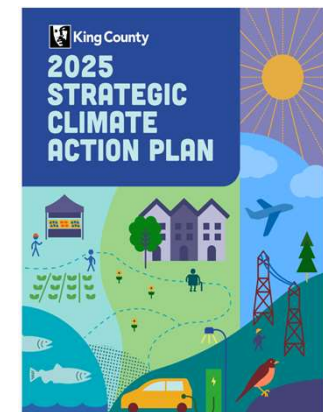
2012



2015



2020



2025

2020 SCAP SUCCESSES

- ✓ Secured more than \$200 million in federal and state funding for climate work, including \$50 million for building decarbonization and \$2 million to improve resilience in the Puget Sound Basin.
- ✓ Launched JumpStart, a work-based learning and career placement program for clean energy and skilled trades, with more than 80% of participants successfully graduating.
- ✓ Partnered with 11 counties and the Suquamish Tribe to implement the Ready, Set, Go wildfire evacuation program, and distributed over 3,700 box fan filters and 5,000 air purifiers to help protect air quality.

2020 SCAP SUCCESSIONS

- ✓ Funded climate equity projects, including park lighting improvements to ensure safety in underserved green spaces, and awarded more than \$330,000 in grants to community organizations leading local climate work.
- ✓ Opened a new wet weather treatment station that protected the Duwamish River and Puget Sound from an estimated 32 million gallons of polluted stormwater and wastewater in its first year of operation.
- ✓ Expanded Metro RapidRide bus service by launching the G and H lines.

2025 APPROACH

- ✓ **More strategic**
- ✓ **Focus on partnerships**
- ✓ **Engage community**

DRAFT - Do not distribute

2025 SCAP PROCESS

JUN–JUL '24

- ✓ **Phase 1:** ID actions to carry forward and gaps
- ✓ Climate Cabinet endorse direction
- ✓ External Stakeholders Workshop #1

AUG–SEP '24

- ✓ External Stakeholders Workshop #2
- ✓ **Phase 2:** Refine & merge actions; develop action templates
- ✓ **Phase 3:** Initial SCAP outline

OCT–DEC '24

- ✓ External Stakeholders Workshop #3
- ✓ Equity screen review
- ✓ Climate Cabinet input on key items.
- ✓ First full draft

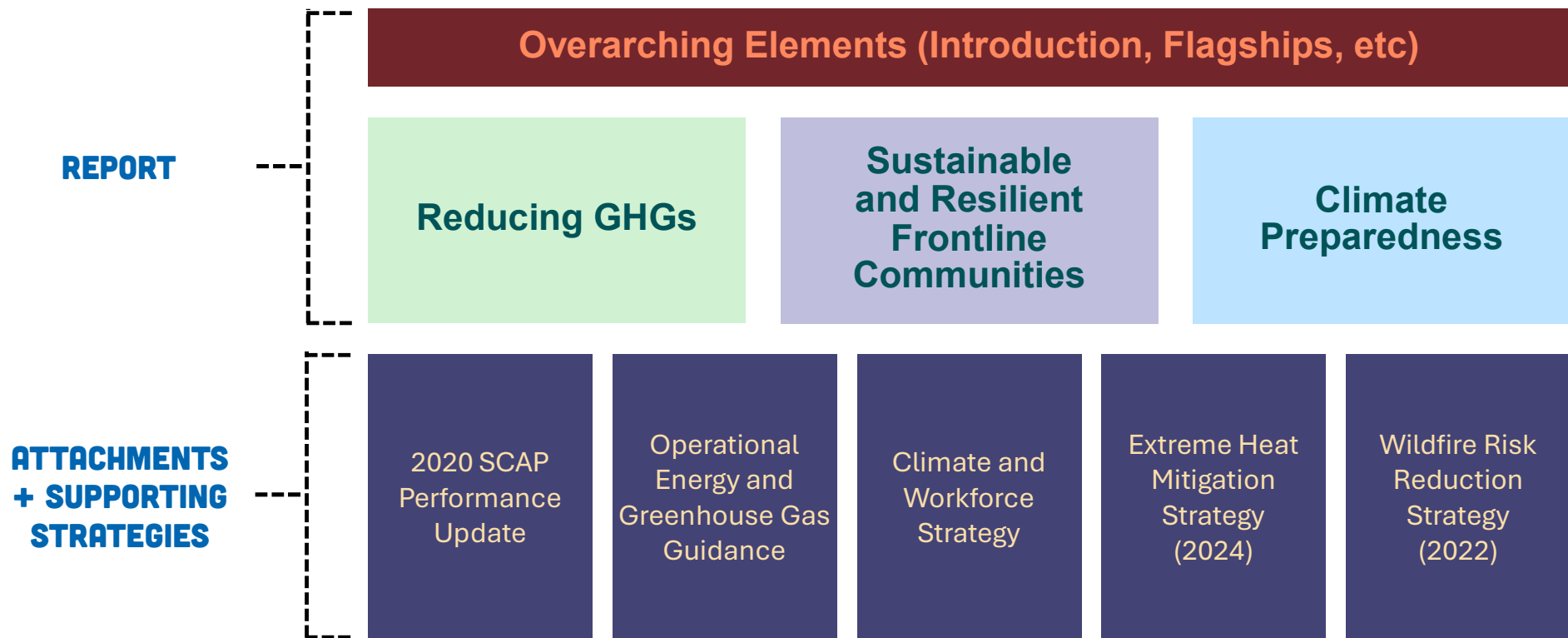
JAN–JUN '25

- ✓ Copy Edits
- ✓ Graphic Layout
- ✓ Climate Cabinet Final Review
- ✓ Council Briefings
- ✓ Council Transmittal

JUN '25– SEP '25

- TrEE Committee
- Council Approval
- Implementation Kick off

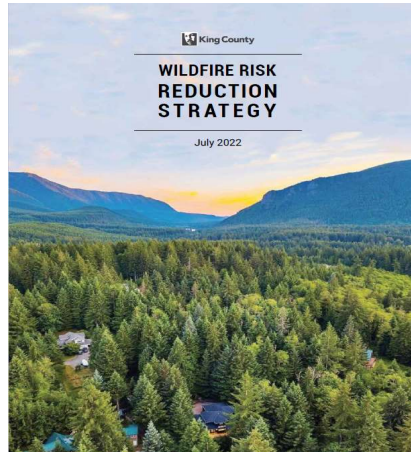
2025 SCAP + ATTACHMENTS





Climate and Workforce Strategy

Update of the green jobs strategy as required by K.C.C. 18.25.010



Wildfire Risk Reduction Strategy

Required per Ordinance 19881, Section 337



Extreme Heat Mitigation Strategy

Funded with a FEMA BRIC grant and released in 2024



01

DEVELOP A SEA LEVEL RISE STRATEGY FOR UNINCORPORATED KING COUNTY

01 Sea level rise will have wide-ranging impacts on public and private shoreline infrastructure and shoreline ecosystems in unincorporated King County. To help guide current and future County work on sea level rise, the County will develop a sea level rise adaptation strategy for managing the impacts of sea level rise on public and private infrastructure and nearshore ecosystems in unincorporated King County, inclusive of unincorporated areas in the lower Duwamish Valley. This includes developing organizational policies and guidelines for managing sea level rise across King County programs and identifying approaches to managing the impacts of sea level rise on shoreline infrastructure and ecosystems.

02 **LEAD AGENCIES:**
ECO

PARTNER AGENCIES:

DES-OEM; DLS-Roads, Permitting; DNRP-WLRD, WTD; PHSKC; PSB-RP

03 **EXTERNAL PARTNERS:**

Shoreline residents; Washington Sea Grant

04 **EQUITY OBJECTIVES:**

Engagement; reduce disproportionate impacts; relationship building; share benefits

05 **STRATEGIC CONNECTIONS:**

2024 King County Flood Management Plan; Clean Water Healthy Habitat Strategic Plan; King County Comprehensive Plan; King County Shoreline Master Program

06 **EARLY ACTION** 🕒

07 **KING COUNTY ROLE:**

Advocate/Support Convene **Implement**

08 **ACTION TYPE:**

Continuing Accelerated **New**

09 **IMPLEMENTATION FEASIBILITY:**

Easy **Moderate** Hard

10 **FUNDING NEED:**

Within current capacity **Additional** New

11 **FUNDING DEPENDENCIES:**

County Grant Other

HOW TO READ AN ACTION

Each of the actions in the SCAP ensure clarity and accountability by specifying:

- **Who** is responsible (2,3)
- **What** needs to get done (1, 7,8)
- **What** other dependencies need to be considered (4,5,9,10,11)
- **When & Where** it needs to get completed by (6)

FLAGSHIPS

Weaving together climate actions

FLAGSHIPS

3

Connected and
accessible
transportation



5

Fresh, local food
for everyone



7

Clean air,
water, and
healthy
ecosystems



1

Put frontline
communities
first



2

Safe, healthy, and
climate-ready
buildings



6

Designing out
waste



8

Reliable and
future-ready
infrastructure



9

Collective
leadership and
community-led
solutions



4

Economic
mobility and
career
opportunities



NEW!

FLAGSHIPS

1. Put Frontline Communities First

Investing in leadership, expanding access to resources, and ensuring climate policies are designed with and for frontline communities.

2. Safe, Healthy, and Climate-Ready Buildings

Strengthening housing and workplaces to withstand extreme heat, wildfire smoke, and flooding while ensuring affordability and preventing displacement.

3. Connected and Accessible Transportation

Expanding sustainable mobility options like transit, biking, and walking to reduce car dependency and improve access to jobs, schools, and services.

4. Economic Mobility and Career Opportunities

Ensuring the clean energy transition creates economic opportunities, particularly for historically excluded workers and communities.

5. Fresh, Local Food for Everyone

Strengthening food security and sustainable agriculture by supporting farmers, reducing food waste, and increasing access to fresh, healthy food.

6. Design Out Waste

Reducing consumption, preventing waste, and reusing valuable materials.

7. Clean Air, Water, and Healthy Ecosystems

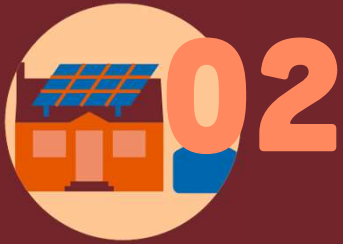
Protecting and restoring forests, waterways, and green spaces to improve public health, biodiversity, and climate resilience.

8. Reliable and Future-Ready Infrastructure

Modernizing roads, utilities, and public services to withstand climate extremes while ensuring equitable access to essential infrastructure.

9. Collective Leadership and Community-Led Solutions

Embedding equity in climate governance by ensuring frontline communities, Tribes, and local organizations help shape and lead climate solutions.



02 SAFE, HEALTHY, & CLIMATE READY BUILDINGS

Ensuring every home and workplace is energy efficient and resilient

GHG



Building Energy & Green Building

GHG 26. *Directly facilitate retrofits of housing and community assets of frontline communities*

SRFC



Housing Security Anti-Displacement

SRFC 32. *Invest in Equitable Development*

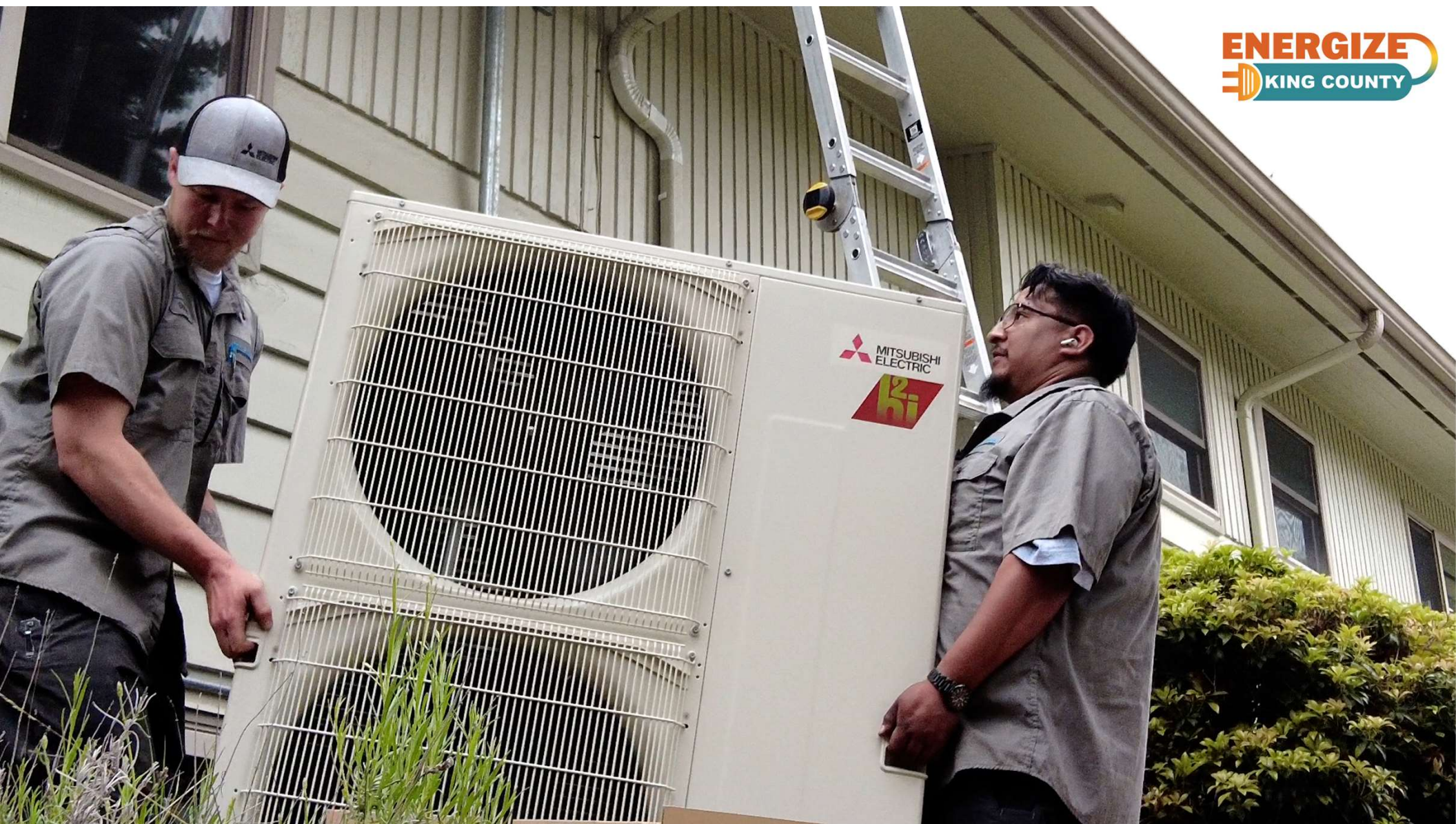
PREP



Wildfire Risk Reduction

Prep 30. *Develop Community Wildfire Protection Plans*





GHG

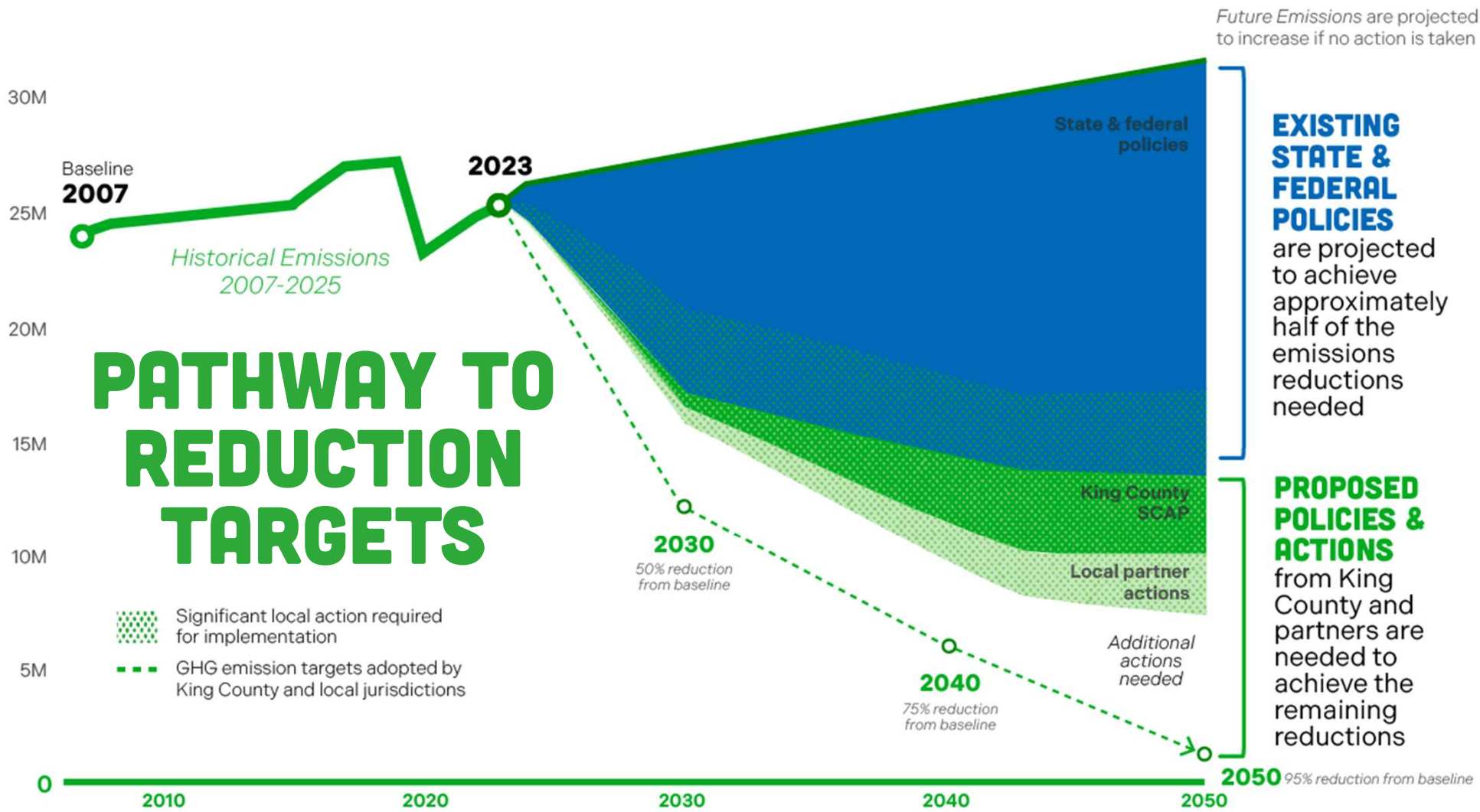
Reducing Greenhouse Gas Emissions

GHG

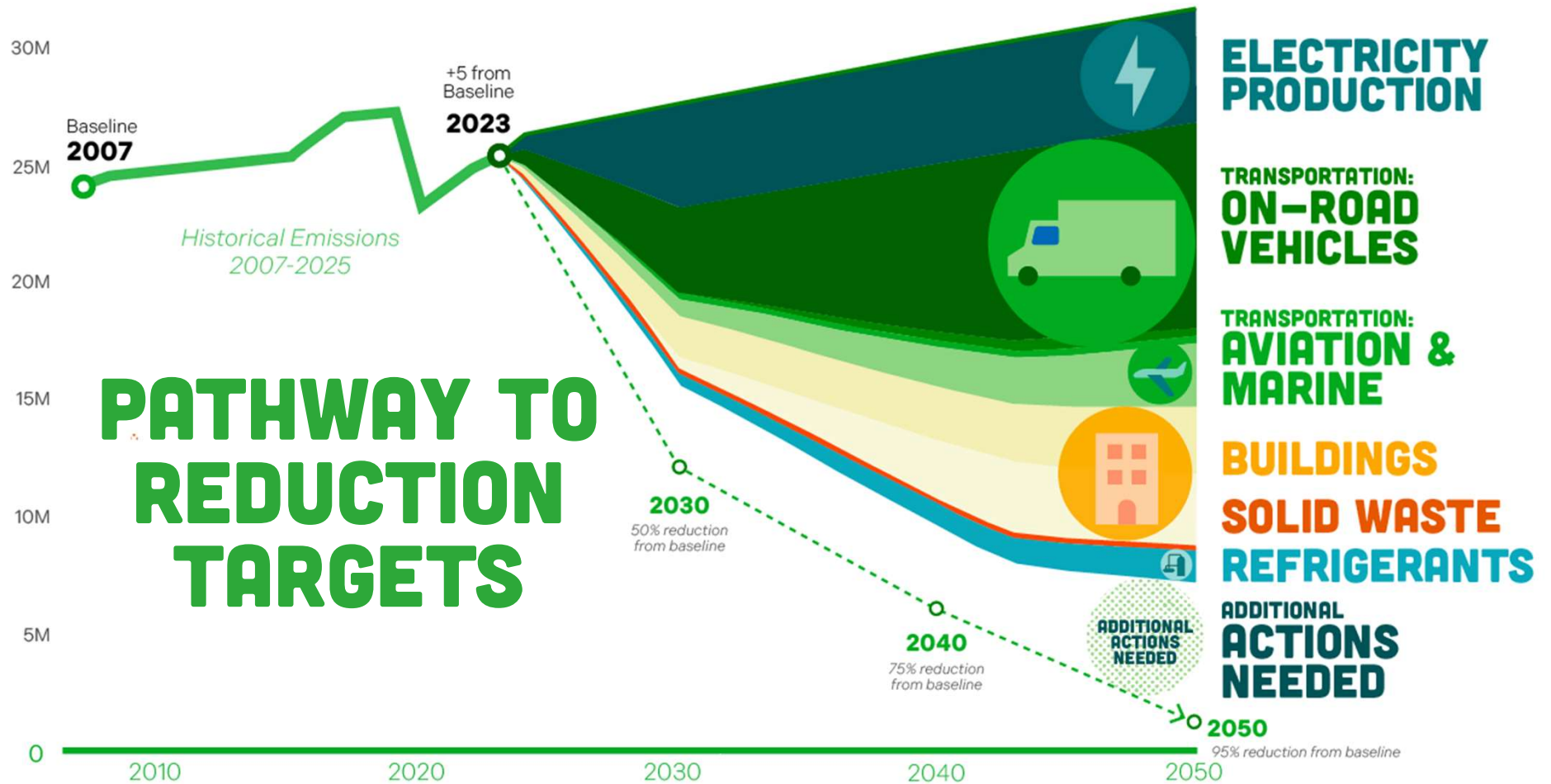


The 2025 SCAP outlines plans to work with partners and communities over the next five years to focus on the following:

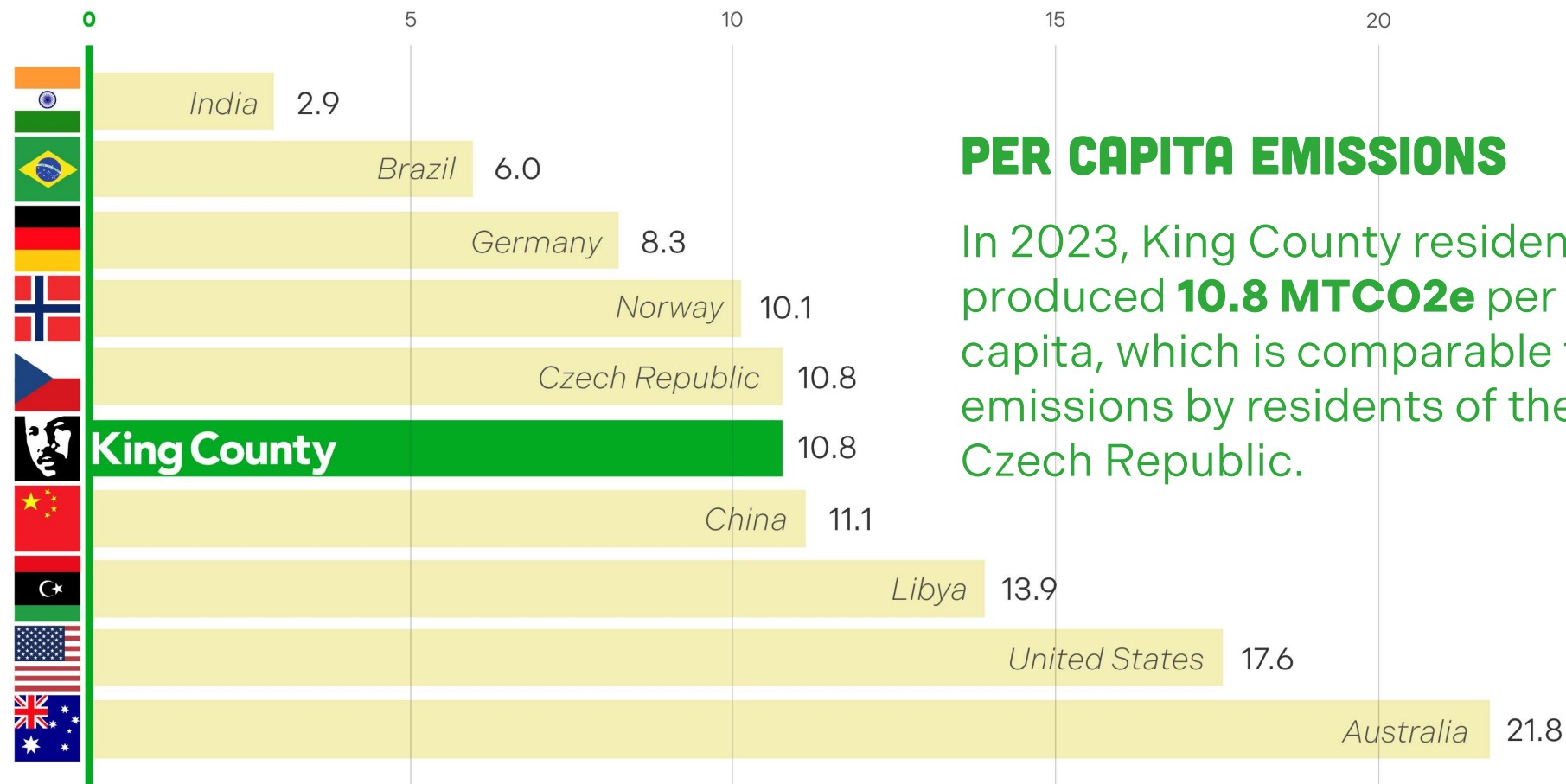
- **Lead by example**, advocating for stronger GHG emissions policies, demonstrating local leadership, and strengthening accountability within County operations.
- **Accelerate clean energy and zero-emissions solutions** through high-performance green buildings, energy efficiency programs, and the transition to zero-emissions infrastructure and fleets.
- **Expand access to reliable transportation** by improving public transit, supporting active mobility, and reducing emissions from vehicle emissions.
- **Reduce waste** through a circular economy that focuses on reuse, recovery, and responsible consumption.
- **Take care of natural lands and prepare infrastructure for the future** by supporting farming and forestry practices that capture carbon and building public infrastructure that can handle climate impacts and serve all communities equitably



Future Emissions are projected to increase if no action is taken



MTCO₂e
Million Metric Tons



Source: *European Commission Emissions Database for Global Atmospheric Research* (2024), *King County Climate Office* (2025)

SRFC

Sustainable and Resilient Frontline Communities

SRFC



Centers frontline communities—Black, Indigenous, and People of Color (BIPOC), immigrant and refugee populations, residents who are low-income, individuals with pre-existing health conditions, unsheltered populations, and outdoor workers—experience the earliest, most severe, and longest-lasting climate impacts.

- **The SRFC focus areas and framework were co-created** with the Climate Equity Community Task Force (CECTF), community members who represent frontline communities.
- **These communities are more likely to** live in flood-prone areas, neighborhoods with less tree cover, or near major roadways with high pollution levels, putting them at greater risk of extreme heat, poor air quality, and displacement due to climate disaster.
- **Historically, government-led climate responses** have not fully accounted for the lived experiences and priorities of these communities, leading to solutions that do not effectively address their needs.

SRFC

The 2025 SCAP reflects community priorities for policymaking and leadership in climate action. Key focus areas include:

- **Housing security and anti-displacement efforts** that ensure investments in climate resilience do not displace residents by expanding affordable housing, protecting renters, and ensuring equitable access to energy-efficient home upgrades.
- **Expanded access to transit** and affordable, low-carbon mobility options for all communities.
- **Energy justice and utilities affordability** measures reduce energy burdens for households who are low-income, transitioning away from fossil fuels, and expanding clean energy solutions.
- **Workforce development** efforts help create jobs, training, and economic opportunities, especially in frontline communities and with workers who have been historically excluded.
- **Food security and sustainable agriculture** strengthens food systems by supporting local farmers, reducing food waste, and increasing access to fresh, healthy food for frontline communities.

CLIMATE AND WORKFORCE STRATEGY

The 2025 Climate and Workforce Strategy builds on the 2023 Green Jobs Strategy with a central goal: to connect frontline communities to living-wage employment opportunities to build a skilled and diverse workforce across the career spectrum. The 2025 Climate and Workforce Strategy outlines a comprehensive approach to integrating workforce development into climate action, establishing a clear roadmap and resource network for:



Meeting labor and business needs for reducing emissions

Climate-focused training programs and employer partnerships to meet critical labor and local business engagement needs for King County's clean energy deployment goals.



Improving employment pathways for frontline communities

Clear and measurable pathways to secure county employment opportunities, supporting departmental recruitment goals.



Securing sustainable funding sources

Identifying and establishing durable public-private funding streams to support climate workforce development needs.



Strengthening the connection between climate & economic opportunity

Policies and procedures to enhance labor and economic benefits for workers involved in capital projects essential to clean energy deployment.

PREPAREDNESS

Preparing for the Impact of Climate Change

PREP



Climate change is impacting King County, and the pace of it is increasing. Heavier rain events, hotter summers, sea level rise, and increasing wildfire risk pose serious risks to the community, infrastructure, and natural ecosystems.

- **2021 Heat Dome** led to 126 heat-related deaths in Washington State, including more than 30 deaths in King County. Temperatures exceeded 100°F for three consecutive days, peaking at 108°F at Sea-Tac Airport, 109°F in Renton, and 118°F in Maple Valley.
- **2022 Bolt Creek Fire** grew 7,600 acres in the first 24 hours and burned for more than six weeks, forced residential evacuations, required frequent closures of Highway 2, damaged forest lands of economic and cultural significance, and impacted air quality for weeks.
- **2022 King Tide Flooding** caused unprecedented coastal flooding along Puget Sound shorelines, including the Vashon-Maury Islands shoreline and in South Park and Georgetown.

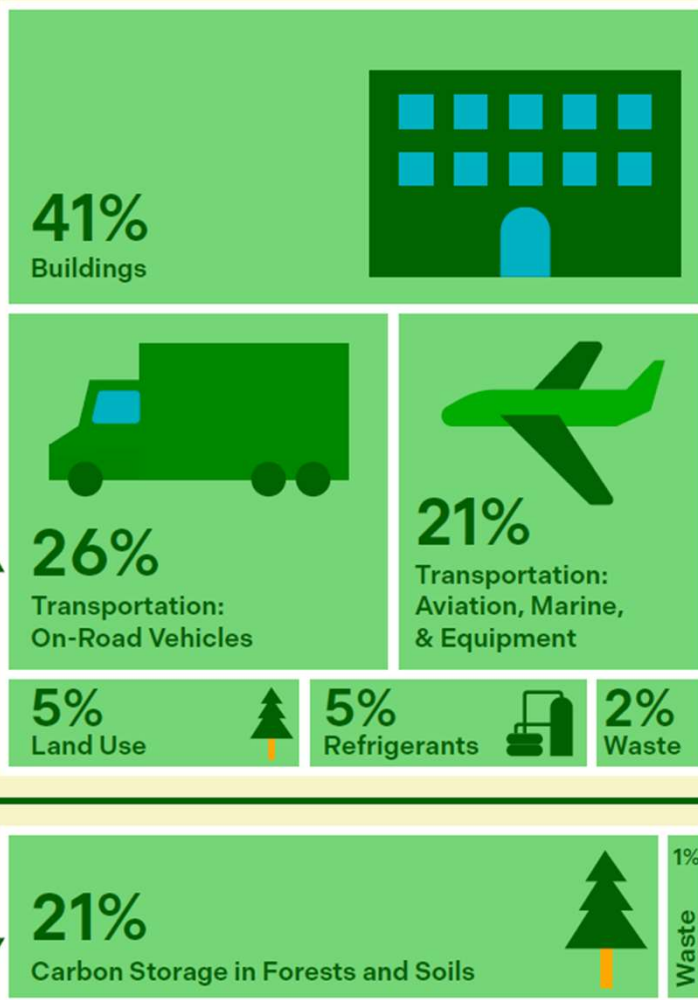
PREP

The 2025 SCAP will reduce climate risks and enhance resilience through actions that:

- **Help people and communities stay safe and healthy** in the face of climate change by reducing risks from sea level rise, drought, flooding, extreme heat, and wildfire.
- **Build resilient infrastructure** by incorporating climate risks into how the County designs, builds, and upgrades capital projects. This includes flood protection, stormwater systems, wastewater facilities, and Metro transit infrastructure.
- **Implement multi-benefit solutions**, including expansion of green infrastructure like stormwater parks, rain gardens, and street trees to manage flooding, improve water quality, and create healthier communities.
- **Increase ecosystem resilience** through the restoration and management of forests, shorelines, and habitat inclusive of climate change.
- **Strengthen collaboration, knowledge, and systems for long-term resilience**, including work with local, regional, and tribal partners to prepare for climate impacts like sea level rise, drought, flooding, extreme heat, and wildfire.

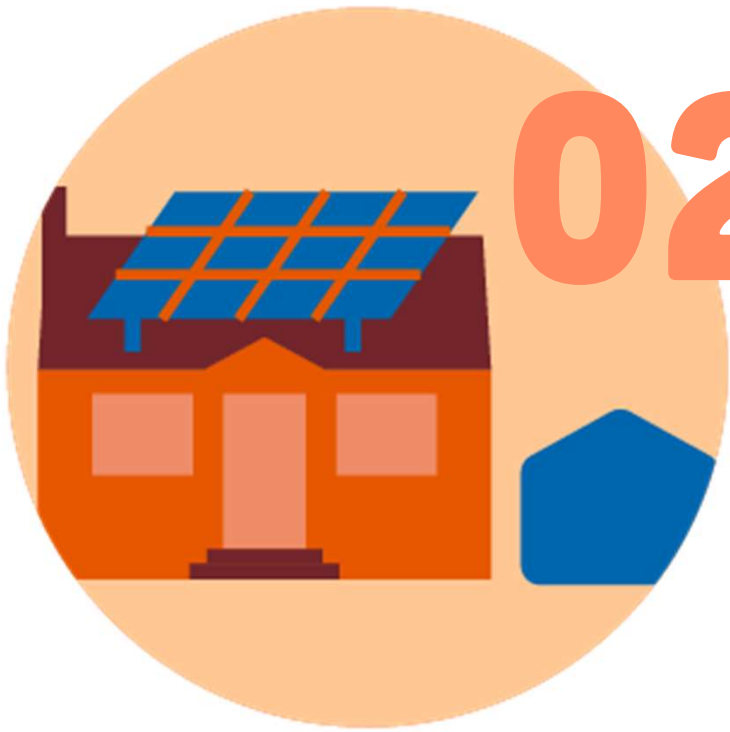
THANK YOU!

Total 2023
GHG Emissions:
25.5 MMTCO₂e



EMISSIONS BY SECTOR

In 2023, GHG emissions in King County were **25.5** million metric tons carbon dioxide equivalent (MMTCO₂e), down from a peak of 27.1 in 2019.



02

SAFE, HEALTHY & CLIMATE READY BUILDINGS

Ensuring every home and workplace is energy efficient and resilient



Lowering GHG emissions by improving energy efficiency and reducing reliance on fossil fuels



Protecting public health and increasing climate resilience



Lowering energy costs & preventing displacement

CLIMATE AND WORKFORCE GOALS

The 2025 Climate and Workforce Strategy outlines **four** key goals, each tied to specific actions King County will implement between 2025-2030 to achieve them.



King County Metro staff engage with youth through demo station at first Green Jobs, Green Futures Summit, as featured on Fox13 news coverage and Back2Besa show.

- **Goal 1:** Grow careers and employment opportunities through regional partnerships
- **Goal 2:** Build accessible bridges to living-wage careers addressing climate change in frontline communities
- **Goal 3:** Invest in building labor and business networks within local high-demand industry sectors essential to clean energy deployment
- **Goal 4:** Advance climate action in partnership with King County employees

WILDFIRE RISK REDUCTION AND HEAT MITIGATION STRATEGIES

Providing strategic direction for local and countywide action



Wildfire Risk Reduction Strategy

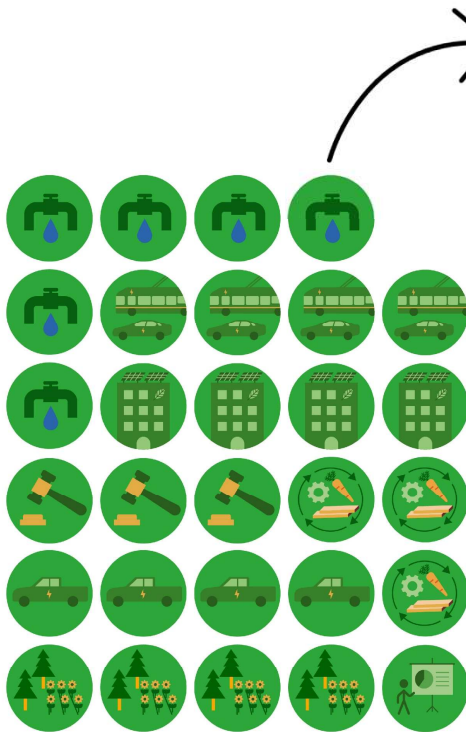
- Co-developed in partnership with representatives from public, private, and Tribal agencies and organizations.
- Includes 12 actions focused on three strategic priorities:
 - increasing forest resilience to wildfire,
 - reducing risks to communities and infrastructure in the wildland-urban interface, and
 - strengthening emergency response.




Extreme Heat Mitigation Strategy

- Co-developed with King County jurisdictions, frontline communities, others.
- Takes a comprehensive approach to heat mitigation, focusing on actions that strengthen short-term response and coping strategies *and* adapt the built environment to reduce the heat island effect.
- Strategic priorities include helping people stay cool and safe during heat events, cooling neighborhoods, designing for heat, and increasing heat safety awareness.

PERFORMANCE MEASURES



GHG (29)

Section	Performance Measure	Target
 Sustainable County Infrastructure	GHG 20. Green Building Ordinance. Ensure 100 percent of County capital projects achieve the highest green building standard as specified in the Green Building Ordinance by 2025 and thereafter	Current Status: 95 percent of County capital projects (2024) 2030 Target: 100 percent of County capital projects



SRFC (18)



PREP (19)

MEASUREMENT FRAMEWORK

Each measure is designed to be actionable, relevant, and closely connected to community priorities, equity considerations, and the County's overarching climate goals

- **Alignment** with Climate objectives and best practices
- **Data availability** and quality
- **Actionability** & decision-making value
- **Duplication** or redundancy