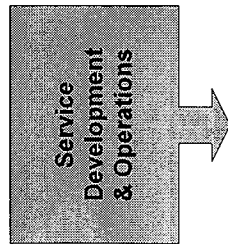


## COMBINED WORK PLAN

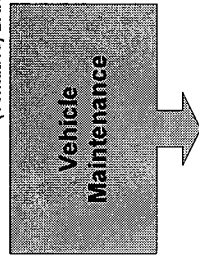
BOOZ ALLEN HAMILTON

KC AUDITOR

(Tentative) BAH contract amendment

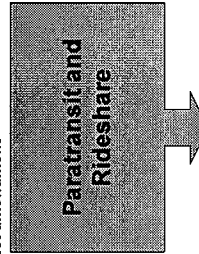


- Components:
- Service design analysis
  - Delay analysis
  - Load factor analysis
  - Scheduling practices
  - Scheduling effectiveness
  - Travel time analysis
  - Blocking and fleet optimization
  - Runcutting analysis
  - Labor contract analysis
  - Operator utilization
  - Use of data and software

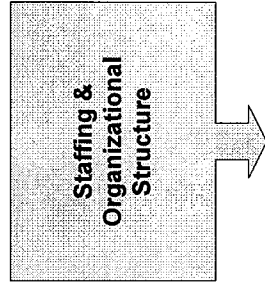


- Components:
- Preventive and corrective maintenance
  - Service standards and scheduling
  - Vehicle maintenance productivity
  - Standard repair times
  - Maintenance staffing

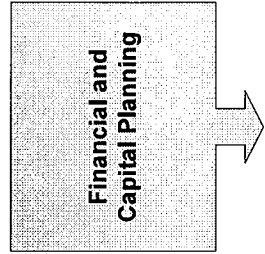
- Base consolidation
- Analysis of constraints such as fare strategies, 40-40-20 policies, unfunded mandates, and labor contract



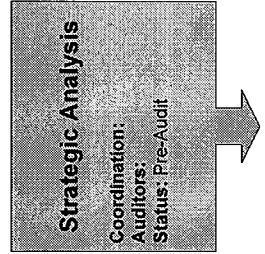
- Components:
- Paratransit
  - Vanpool maintenance
  - Unfunded mandates
  - Labor contract



- Components:
- Design and construction
  - Facilities maintenance
  - Vehicle maintenance (with BAH)
  - Organizational structure and general management
  - Paratransit/Rideshare (with BAH)
  - Power and Facilities
  - Link Rail and SLU
  - Streetcar
  - Service Development
  - Security and Police
  - Sales, Customer Service, and Marketing
  - IT staffing



- Components:
- Financial plans and models: Accurate? Effective?
  - Assumptions documented?
  - Revenue fleet procurement
  - Cost recovery: vis a vis Sound Transit, vanpool, employer passes, SLU streetcar, free ride areas
  - Capital financial planning: Adequate to cover costs? Sufficient for budgeting?
  - Implementation of key recommendations from prior audits



Coordination:  
Auditors:  
Status: Pre-Audit