

9/11/12

Decision: Approved

Sponsored By:

Executive Committee

/pr

1
2
3
4
5
6
7
8
9
10
11
12
13
14
15
16
17
18
19
20
21
22
23
24
25
26
27
28
29
30
31
32
33
34
35
36

MOTION NO. 12-5

A MOTION to amend the Urban Growth Area of King County. This Motion also modifies the Potential Annexation Area map in the Countywide Planning Policies.

WHEREAS, the Washington State Growth Management Act, RCW 36.70A.110 requires counties to designate an urban growth area or areas within which urban growth shall be encouraged and outside of which growth can occur only if it is not urban in nature; and

WHEREAS, Countywide Planning Policy FW-1 Step 8 recognizes that King County may initiate amendments to the Urban Growth Area; and

WHEREAS, the King County Executive and the Metropolitan King County Council requests the Growth Management Planning Council consider the attached amendments to the Urban Growth Area for eventual adoption by the Metropolitan King County Council and ratification by the cities; and

WHEREAS, Countywide Planning Policies LU-31 and LU-32 anticipate the collaborative designation of Potential Annexation Areas and the eventual annexation of these areas by cities. The attached amendments are supported by the affected city.

BE IT RESOLVED THAT THE GROWTH MANAGEMENT PLANNING COUNCIL OF KING COUNTY HEREBY MOVES AS FOLLOWS:

1. Amend the Urban Growth Area as designated by the Urban Growth Areas Map in the Countywide Planning Policies, the Potential Annexation Area map, as depicted on the following attached maps:

- Attachment 1: Sammamish – Soaring Eagle
- Attachment 2: Snoqualmie – Mining Site
- Attachment 3: Auburn – 148th Ave. SE technical correction
- Attachment 4: Black Diamond – 212th Ave. SE technical correction
- Attachment 5: Redmond – NE Union Hill Road/196th Ave NE technical correction
- Attachment 6: Black Diamond – Lake Sawyer Road SE technical correction
- Attachment 7: Renton – SE Old Petrovitski Road technical correction

1
2
3
4
5
6
7
8
9
10
11
12
13
14
15
16
17
18
19
20
21
22
23
24
25
26
27

- Attachment 8: Maple Valley – SE 281st Way technical correction
- Attachment 9: Maple Valley – SE 288th St. technical correction
- Attachment 10: Enumclaw – SE 440th St. technical correction
- Attachment 11: North Bend – SE 142nd St. technical correction
- Attachment 12: North Bend – SE 150th ST technical correction
- Attachment 13: Auburn – SE Green Valley Road technical correction
- Attachment 14: Duvall – SR 203/NE 140th St. technical correction
- Attachment 15: Maple Valley split parcel

2. Amend the Interim Potential Annexation Area Map by including any additional unincorporated urban land created by these UGA amendments in the Potential Annexation Area of the adjoining city, and deleting any land changed from urban to rural from the respective PAA.
3. These amendments are recommended to the King County Council and the Cities of King County for adoption and ratification.

ADOPTED by the Growth Management Planning Council of King County in open session on September 11, 2012 and signed by the chair of the GMPC.

Dow Constantine, Chair, Growth Management Planning Council

Soaring Eagle

Recommended Land Use Map



King County

Department of Development and Environmental Services


The information included on this map has been compiled by King County staff from a variety of sources and is subject to change without notice. King County makes no representations or warranties, express or implied, as to accuracy, completeness, timeliness, or rights to the use of such information. This document is not intended for use as a survey product. King County shall not be liable for any general, special, indirect, incidental, or consequential damages including, but not limited to, lost revenues or lost profits resulting from the use or misuse of the information contained on this map. Any sale of this map or information on this map is prohibited except by written permission of King County.


Date: January 26, 2012
\\gisnas1\Projects\ddes\2012_CompPlan\Projects\SoaringEagle_rec_lubw.mxd
\\gisnas1\Projects\ddes\2012_CompPlan\delivery\SoaringEagle_rec_lubw.pdf
MCCOMBSP

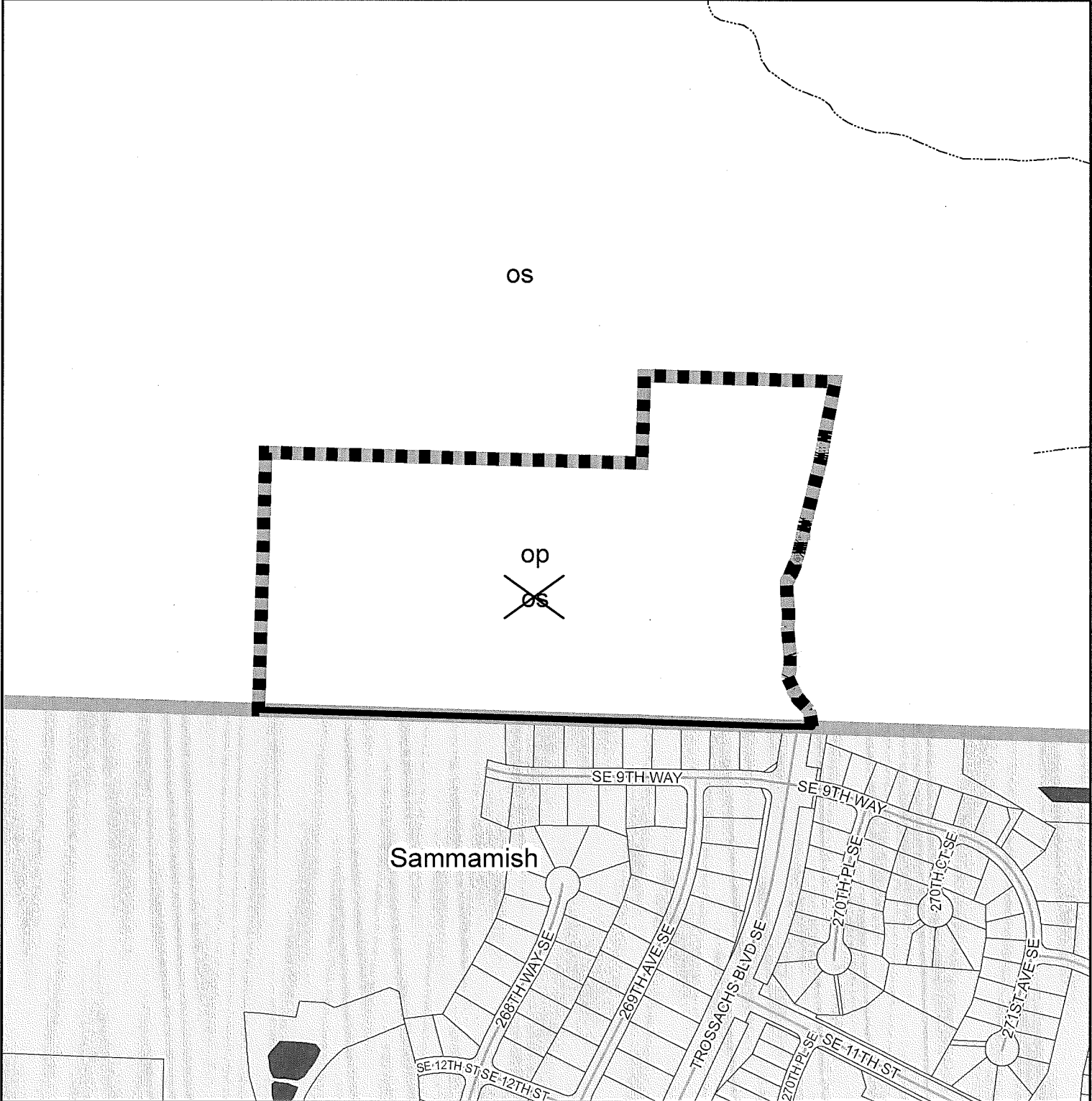
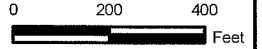
- OS KC Open Space System
- op Other Parks/Wilderness

 Incorporated Areas

 Urban Growth Boundary

 Study Area

 Proposed Urban Growth Boundary





King County





Department of Development and Environmental Services

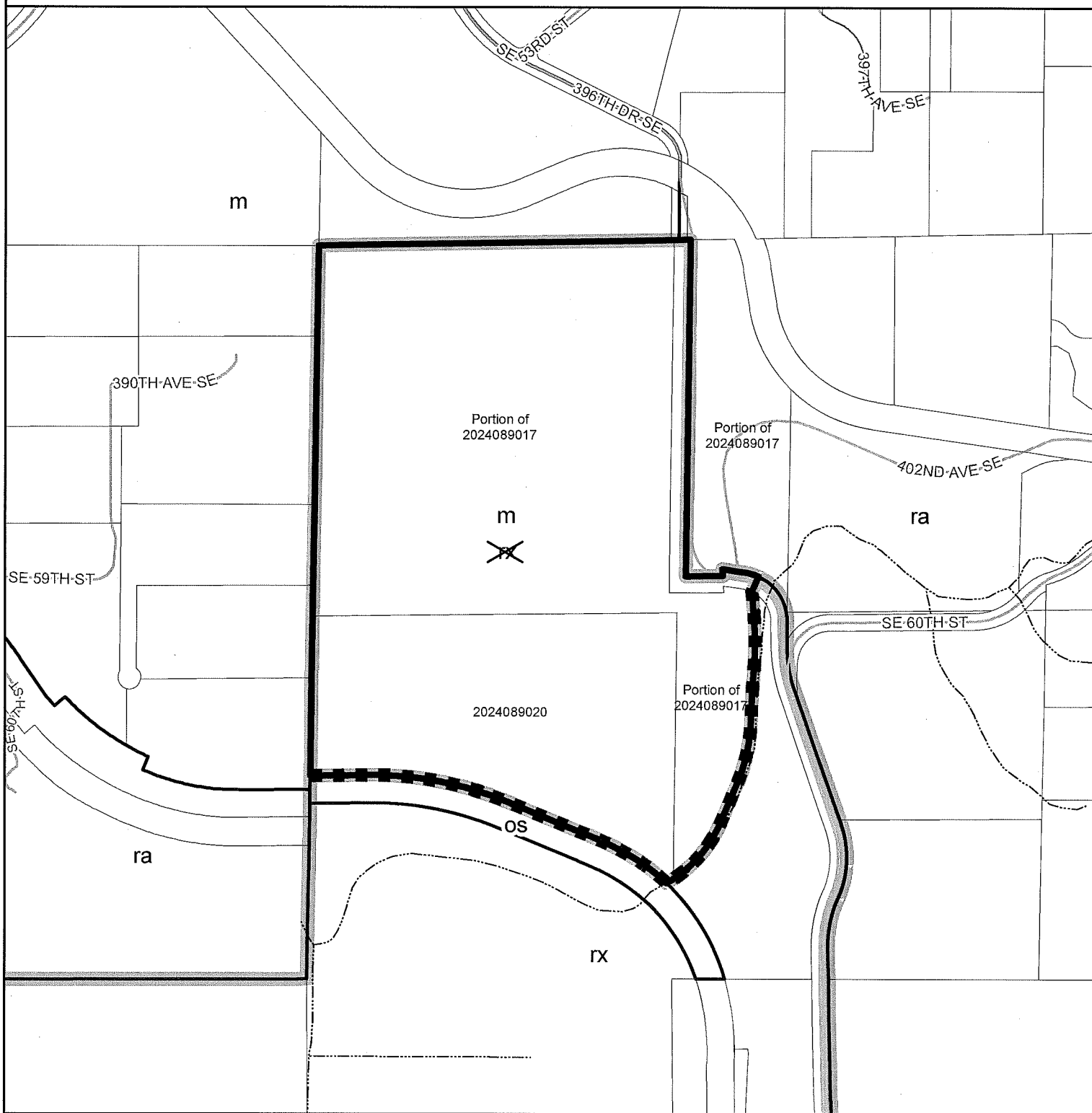
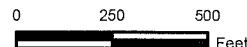
Snoqualmie - Mining

Recommended Land Use Map

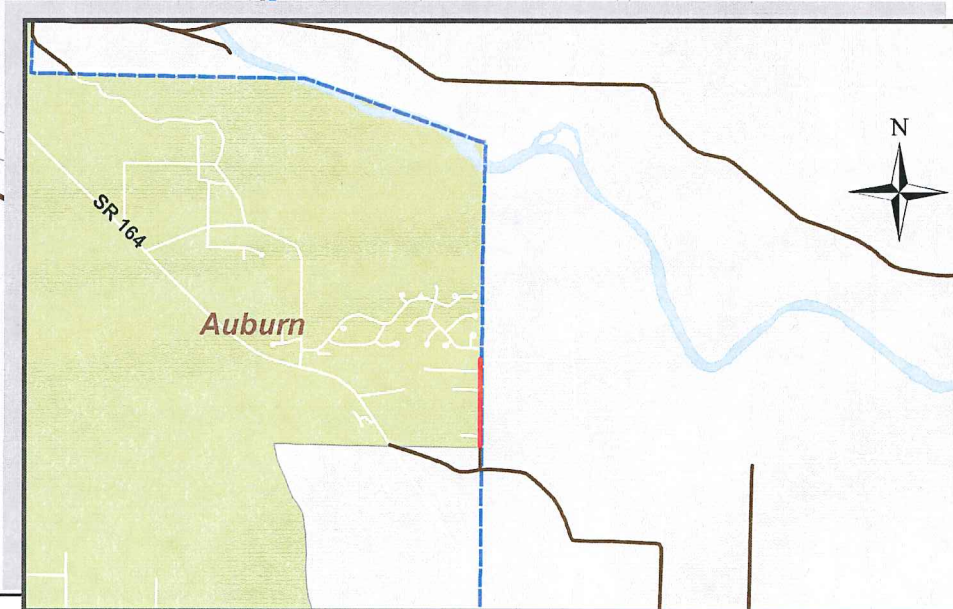
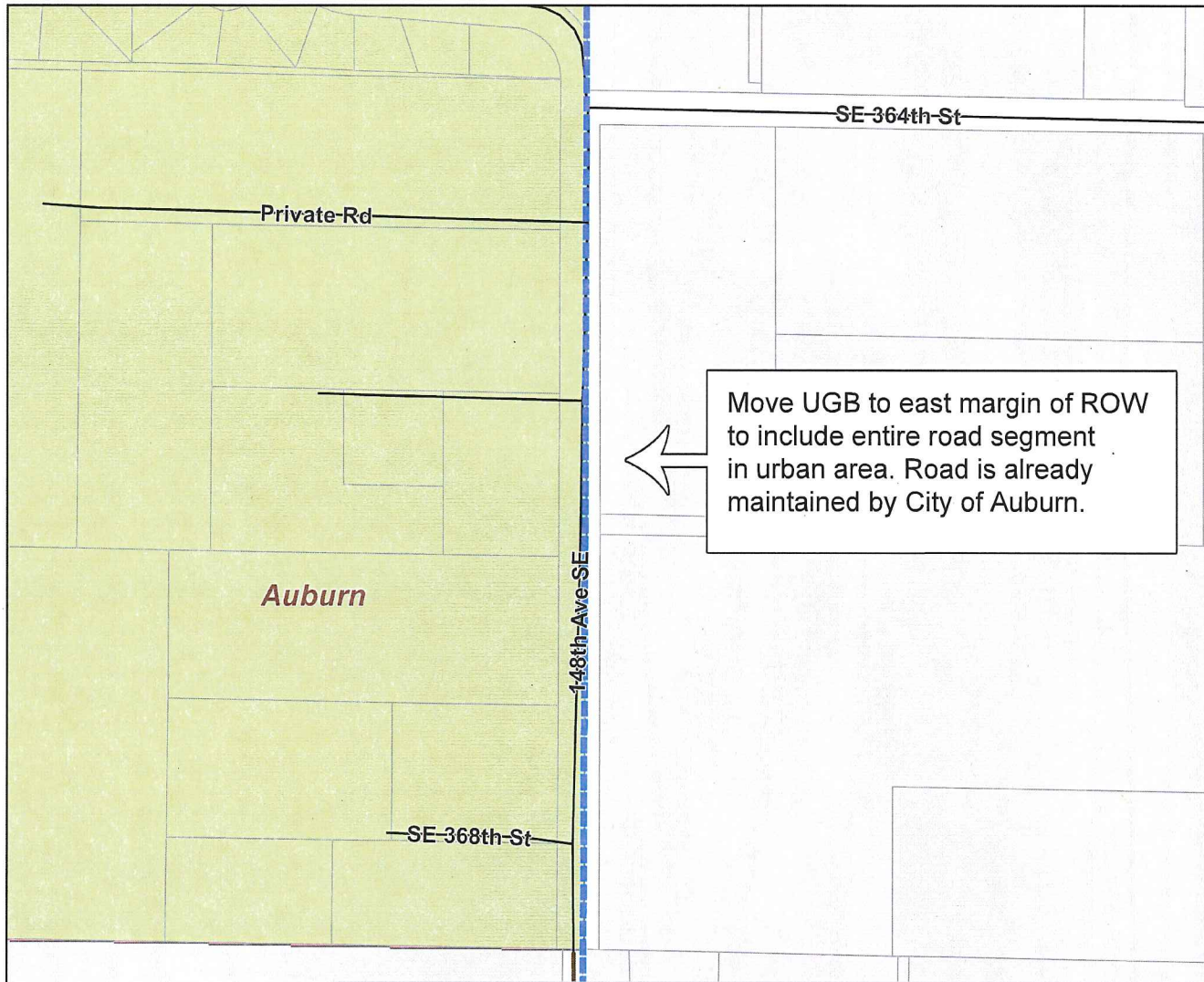
The information included on this map has been compiled by King County staff from a variety of sources and is subject to change without notice. King County makes no representations or warranties, express or implied, as to accuracy, completeness, timeliness, or rights to the use of such information. This document is not intended for use as a survey product. King County shall not be liable for any general, special, indirect, incidental, or consequential damages including, but not limited to, lost revenues or lost profits resulting from the use or misuse of the information contained on this map. Any sale of this map or information on this map is prohibited except by written permission of King County.






Date: August 11, 2012
 \gisnas1\projects\ddes\2012_CompPlan\Projects\SnoqualmieMining.mxd
 \gisnas1\projects\ddes\2012_CompPlan\Delivery\SnoqualmieMining.pdf
 MCCOMBSP

- rx** Rural Cities Urban Growth Area
- ra** Rural Area
- m** Mining
- OS** King County Open Space System
-  Incorporated Areas
-  Urban Growth Boundary
-  Change
-  Proposed Urban Growth Boundary

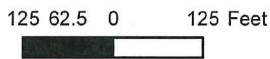


Urban Growth Boundary Right of Way Issues - 148th Avenue SE



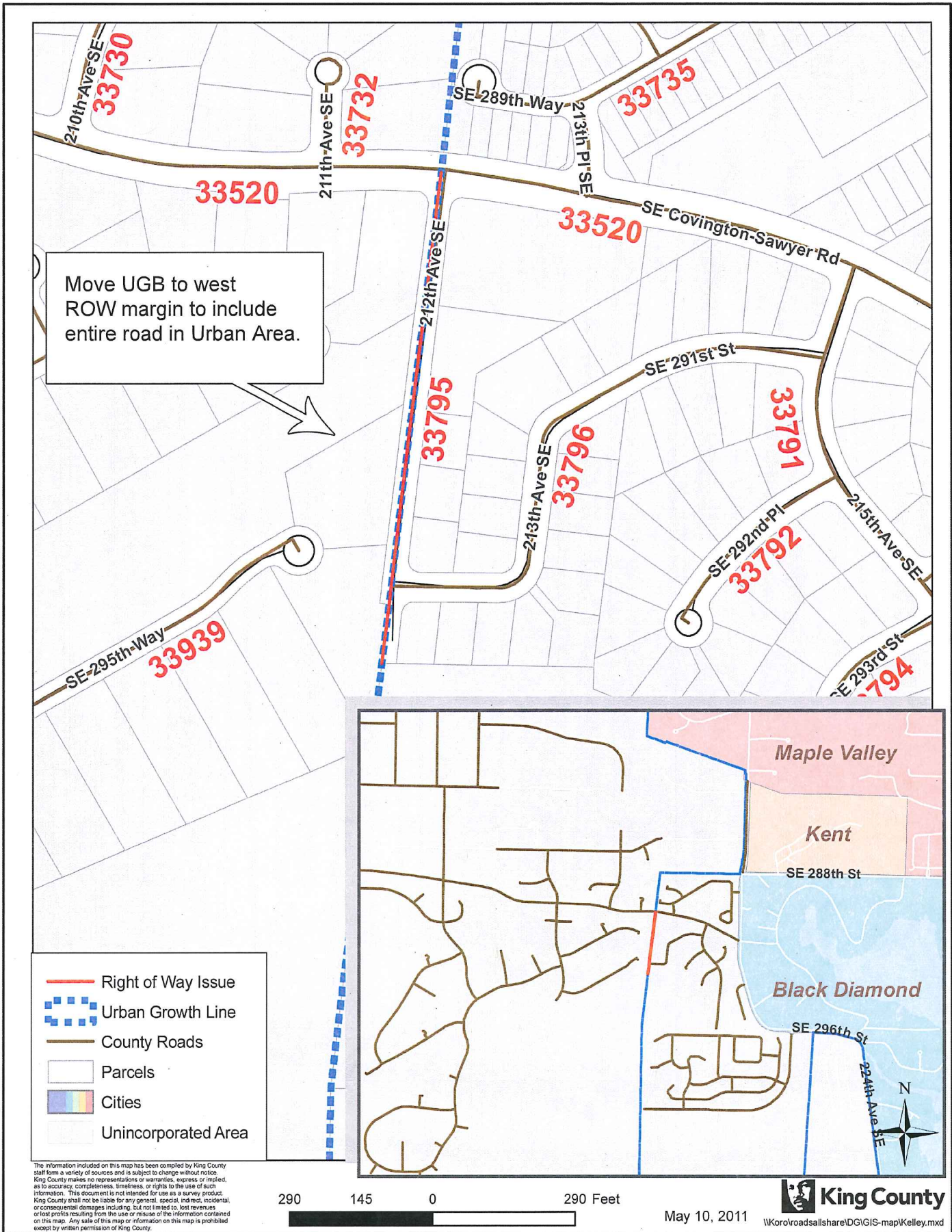
-  Urban Growth Line
-  County Roads
-  Parcels
-  Cities
-  Unincorporated Area

The information included on this map has been compiled by King County staff from a variety of sources and is subject to change without notice. King County makes no representations or warranties, express or implied, as to accuracy, completeness, timeliness, or rights to the sale of such information. This document is not intended for use as a survey product. King County shall not be liable for any general, special, indirect, incidental, or consequential damages including, but not limited to, lost revenues or lost profits resulting from the use or misuse of the information contained on this map. Any sale of this map or information on this map is prohibited except by written permission of King County.

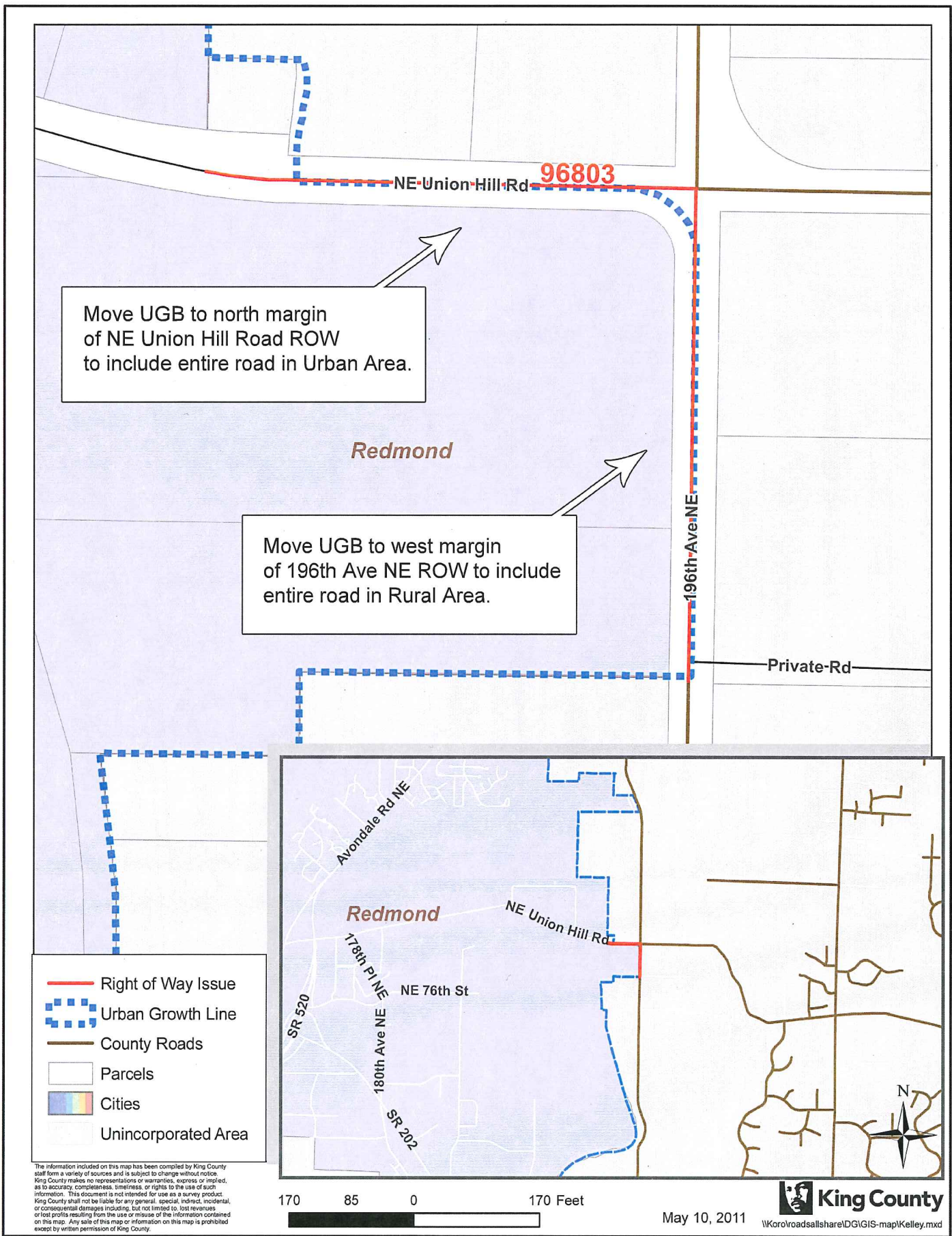


May 10, 2011

Urban Growth Boundary Right of Way Issues - 212th Avenue SE



Urban Growth Boundary Right of Way Issues - NE Union Hill Road

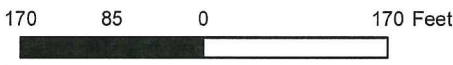


Move UGB to north margin of NE Union Hill Road ROW to include entire road in Urban Area.

Move UGB to west margin of 196th Ave NE ROW to include entire road in Rural Area.

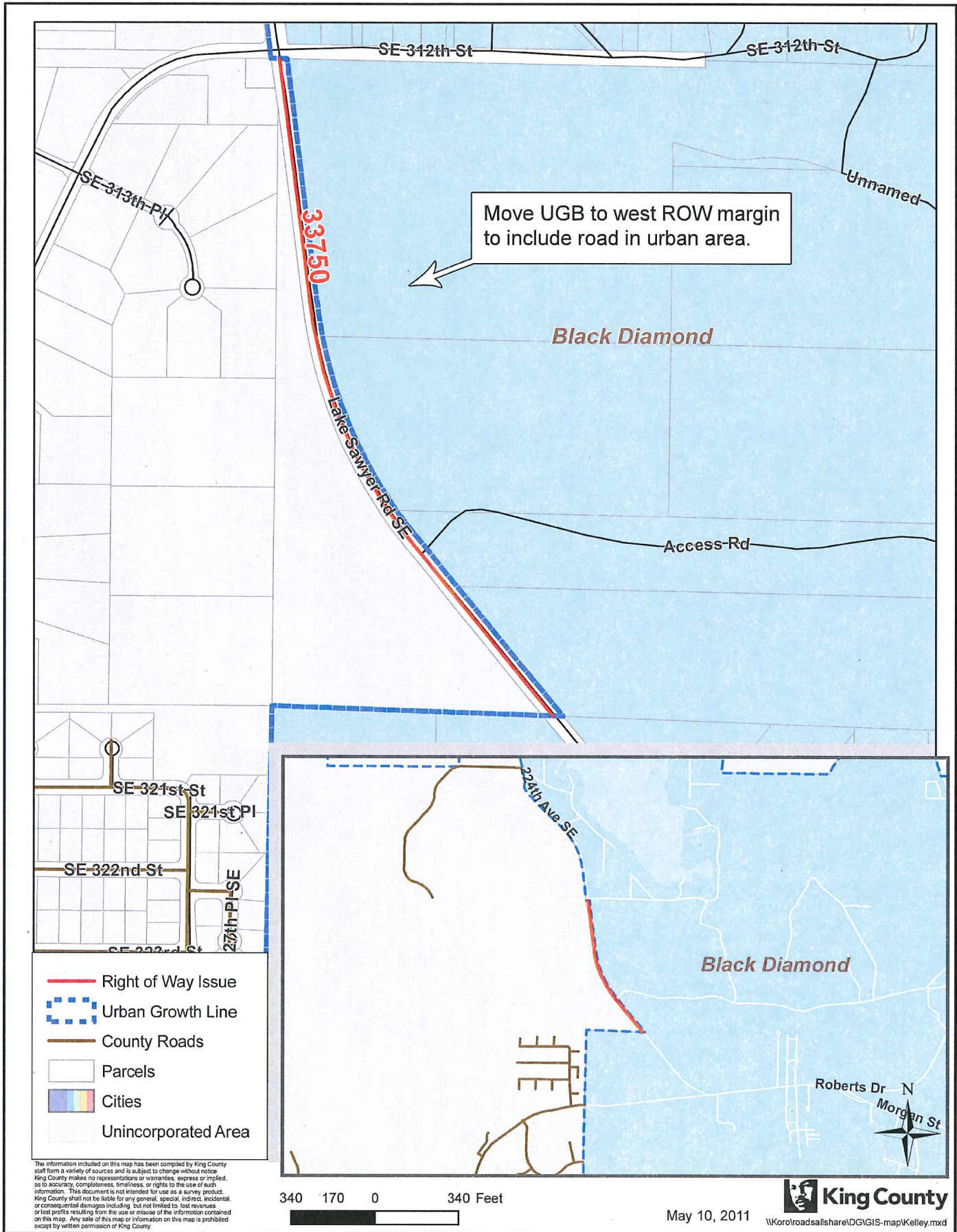
- Right of Way Issue
- - - Urban Growth Line
- County Roads
- Parcels
- Cities
- Unincorporated Area

The information included on this map has been compiled by King County staff from a variety of sources and is subject to change without notice. King County makes no representations or warranties, express or implied, as to accuracy, completeness, timeliness, or rights to the use of such information. This document is not intended for use as a survey product. King County shall not be liable for any general, special, indirect, incidental, or consequential damages including, but not limited to, lost revenues or lost profits resulting from the use or misuse of the information contained on this map. Any sale of this map or information on this map is prohibited except by written permission of King County.



May 10, 2011

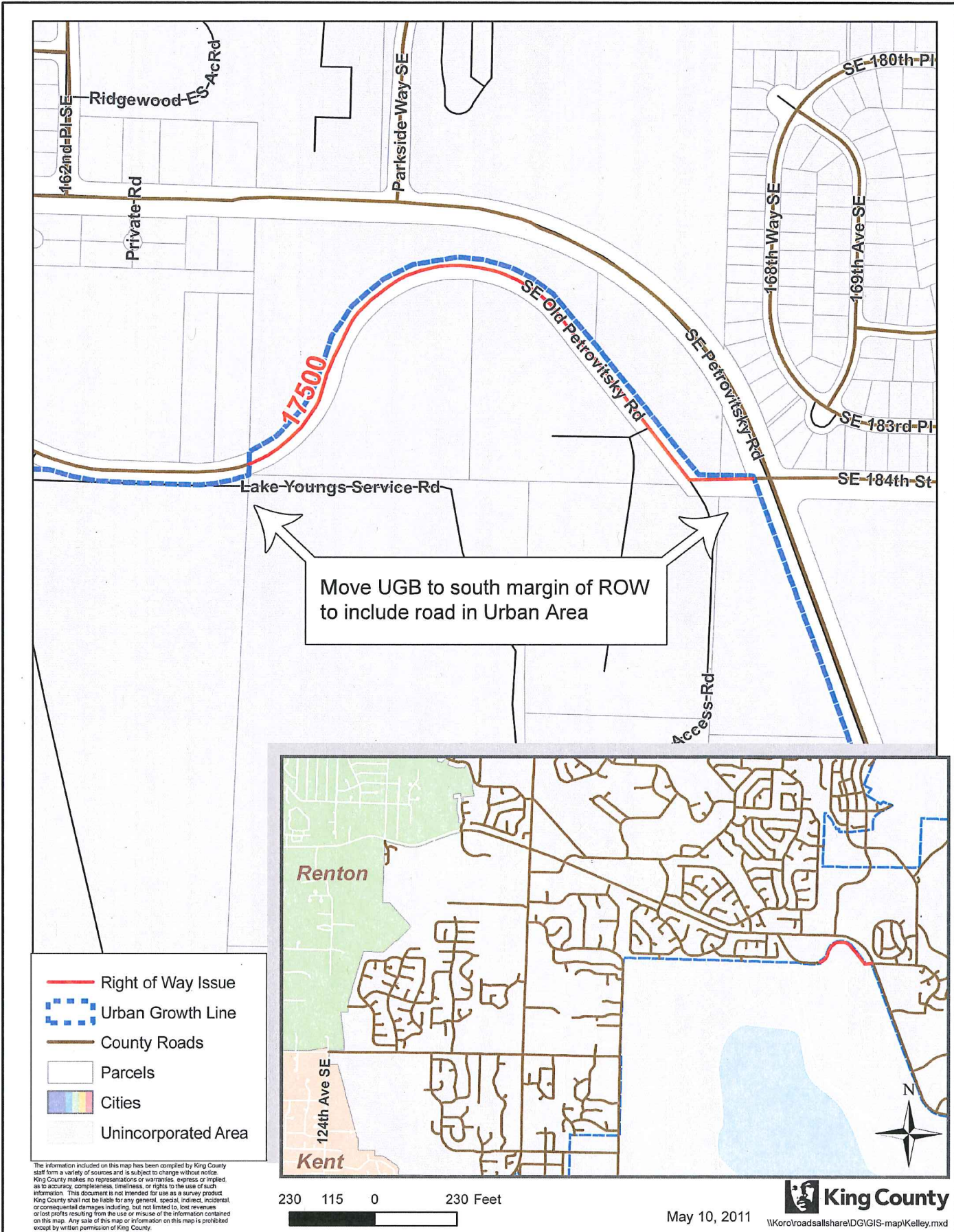
Urban Growth Boundary Right of Way Issues - Lake Sawyer Rd SE



Move UGB to west ROW margin to include road in urban area.

The information included on this map has been compiled by King County staff from a variety of sources and is subject to change without notice. King County makes no representations or warranties, express or implied, as to accuracy, completeness, timeliness, or rights to the use of such information. This document is not intended for use as a survey product. King County shall not be liable for any general, special, indirect, incidental, or consequential damages including, but not limited to, lost revenues or lost profits resulting from the use or misuse of the information contained on this map. Any sale of this map or information on this map is prohibited except by written permission of King County.

Urban Growth Boundary Right of Way Issues - SE Old Petrovitsky Road



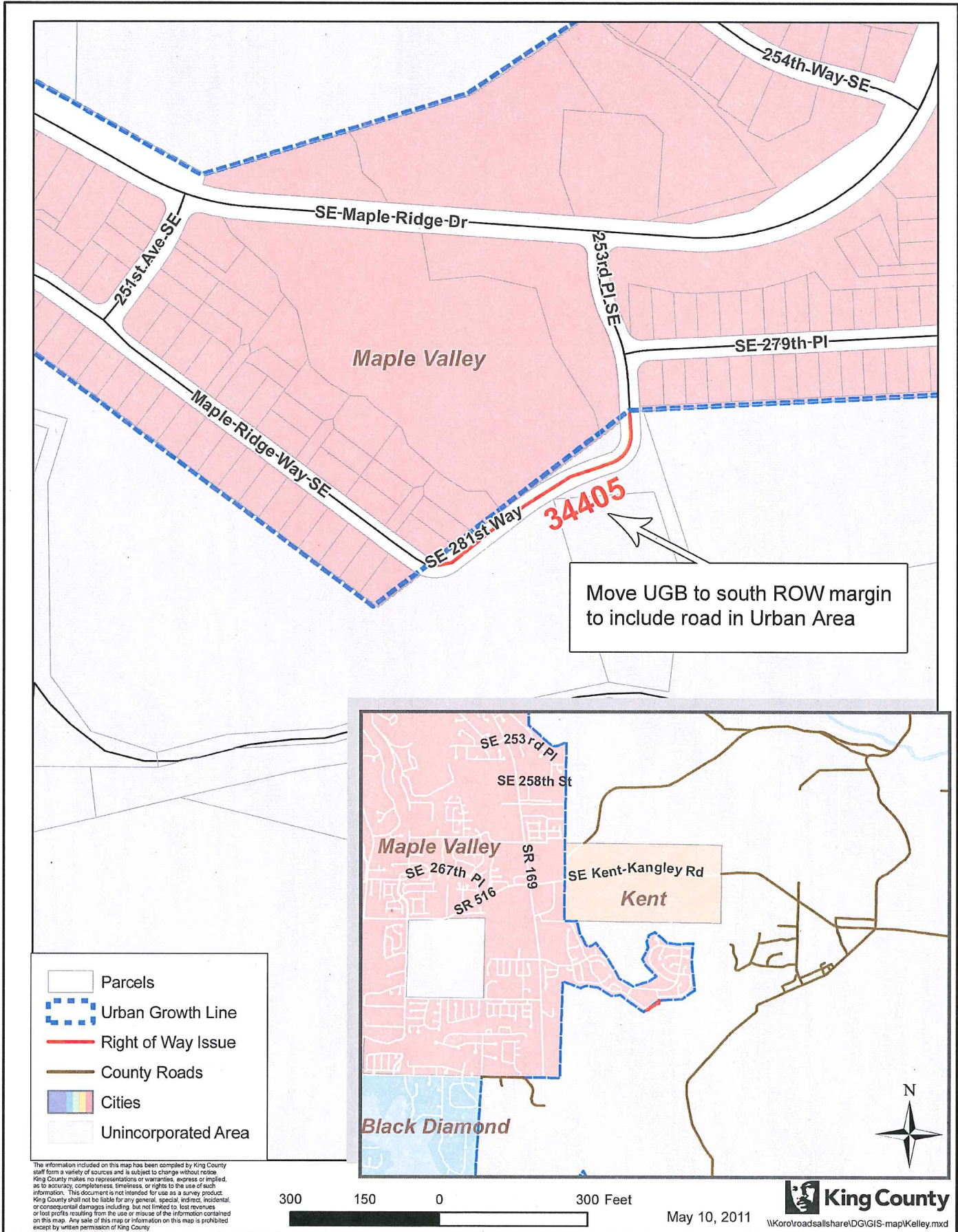
- Right of Way Issue
- - - Urban Growth Line
- County Roads
- Parcels
- Cities
- Unincorporated Area

The information included on this map has been compiled by King County staff from a variety of sources and is subject to change without notice. King County makes no representations or warranties, express or implied, as to accuracy, completeness, timeliness, or rights to the use of such information. This document is not intended for use as a survey product. King County shall not be liable for any general, special, indirect, incidental or consequential damages (including, but not limited to, lost revenue or lost profits) resulting from the use or misuse of the information contained on this map. Any sale of this map or information on this map is prohibited except by written permission of King County.

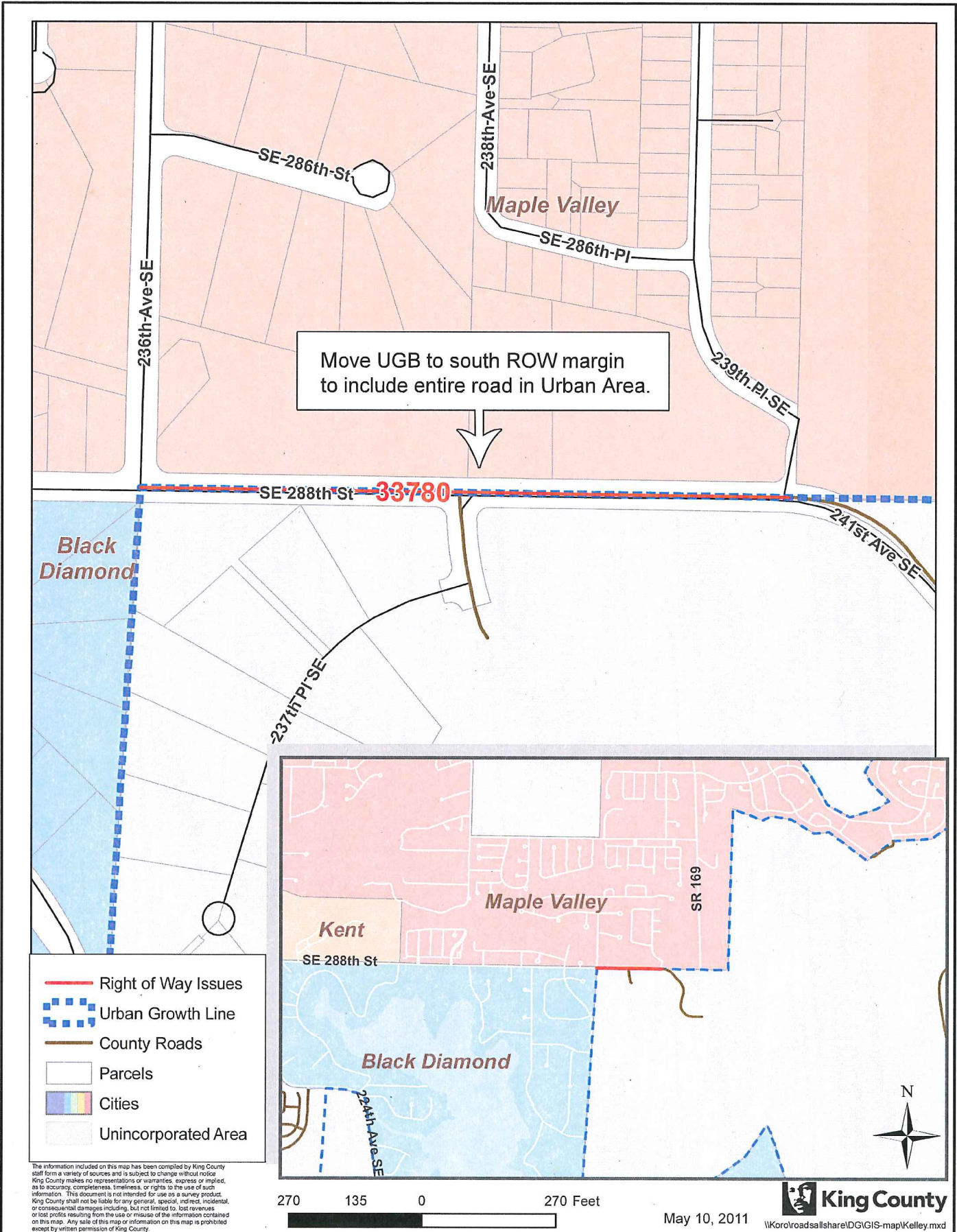
230 115 0 230 Feet

May 10, 2011

Urban Growth Boundary Right of Way Issues - SE 281st Way

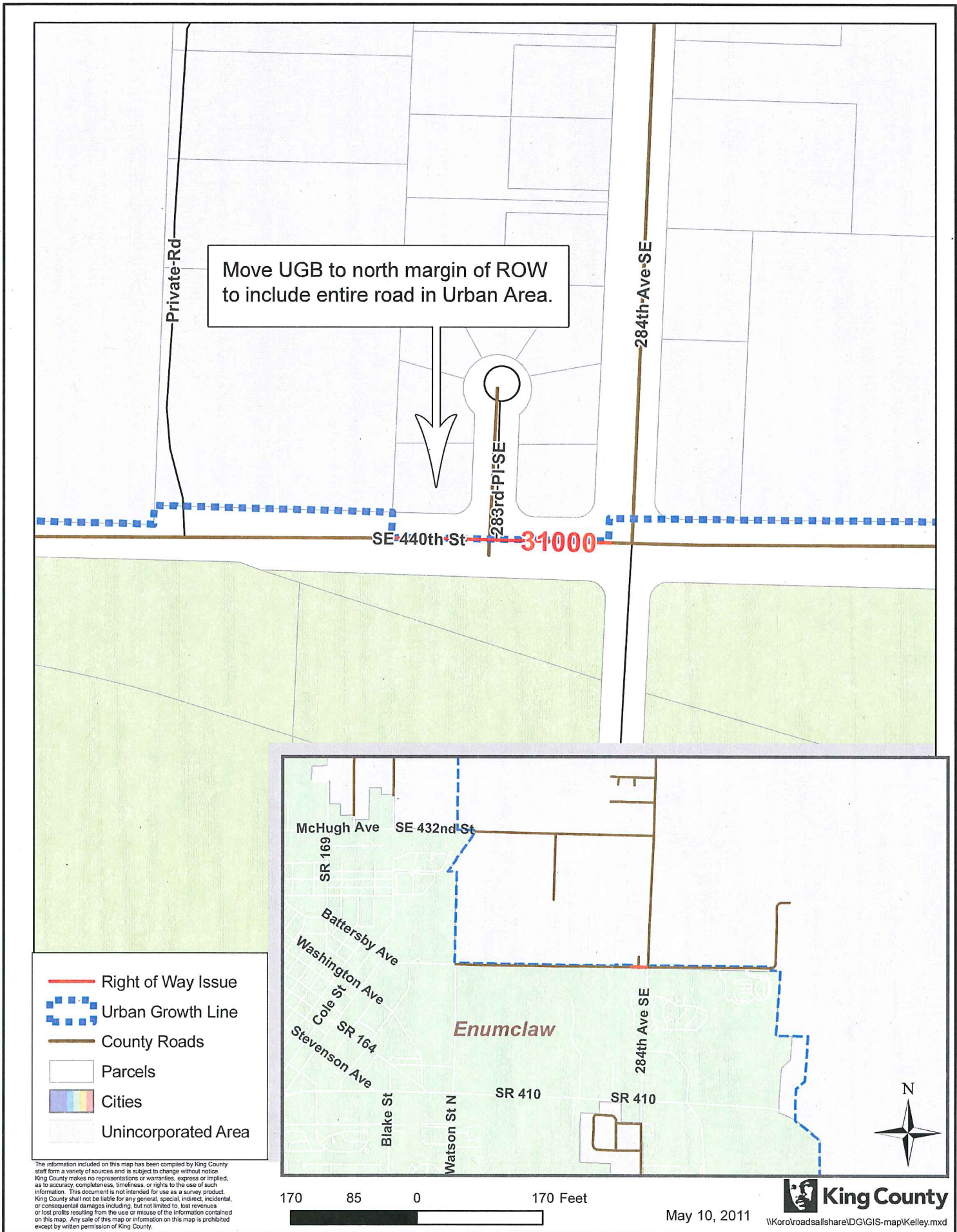


Urban Growth Boundary Right of Way Issues - SE 288th Street

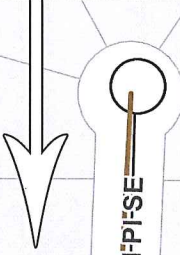


The information included on this map has been compiled by King County staff from a variety of sources and is subject to change without notice. King County makes no representations or warranties, express or implied, as to accuracy, completeness, timeliness, or rights to the use of such information. This document is not intended for use as a survey product. King County shall not be liable for any general, special, indirect, incidental, or consequential damages including, but not limited to, lost revenues or lost profits resulting from the use or misuse of the information contained on this map. Any sale of this map or information on this map is prohibited except by written permission of King County.







Urban Growth Boundary Right of Way Issues - SE 440th Street



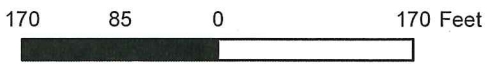
Move UGB to north margin of ROW to include entire road in Urban Area.



SE 440th St 31000

-  Right of Way Issue
-  Urban Growth Line
-  County Roads
-  Parcels
-  Cities
-  Unincorporated Area

The information included on this map has been compiled by King County staff from a variety of sources and is subject to change without notice. King County makes no representations or warranties, express or implied, as to accuracy, completeness, timeliness, or rights to the use of such information. This document is not intended for use as a survey product. King County shall not be liable for any general, special, indirect, incidental, or consequential damages including, but not limited to, lost revenues or lost profits resulting from the use or misuse of the information contained on this map. Any sale of this map or information on this map is prohibited except by written permission of King County.








May 10, 2011

Proposed Revision to UGBL

For Informational Use Only

SE 142nd Street
Section 15, Township 23,
Range 8 E

-  City of North Bend
-  North Bend Potential Annexation Area
-  KC Maintained
-  Current UGBL
-  Proposed UGBL

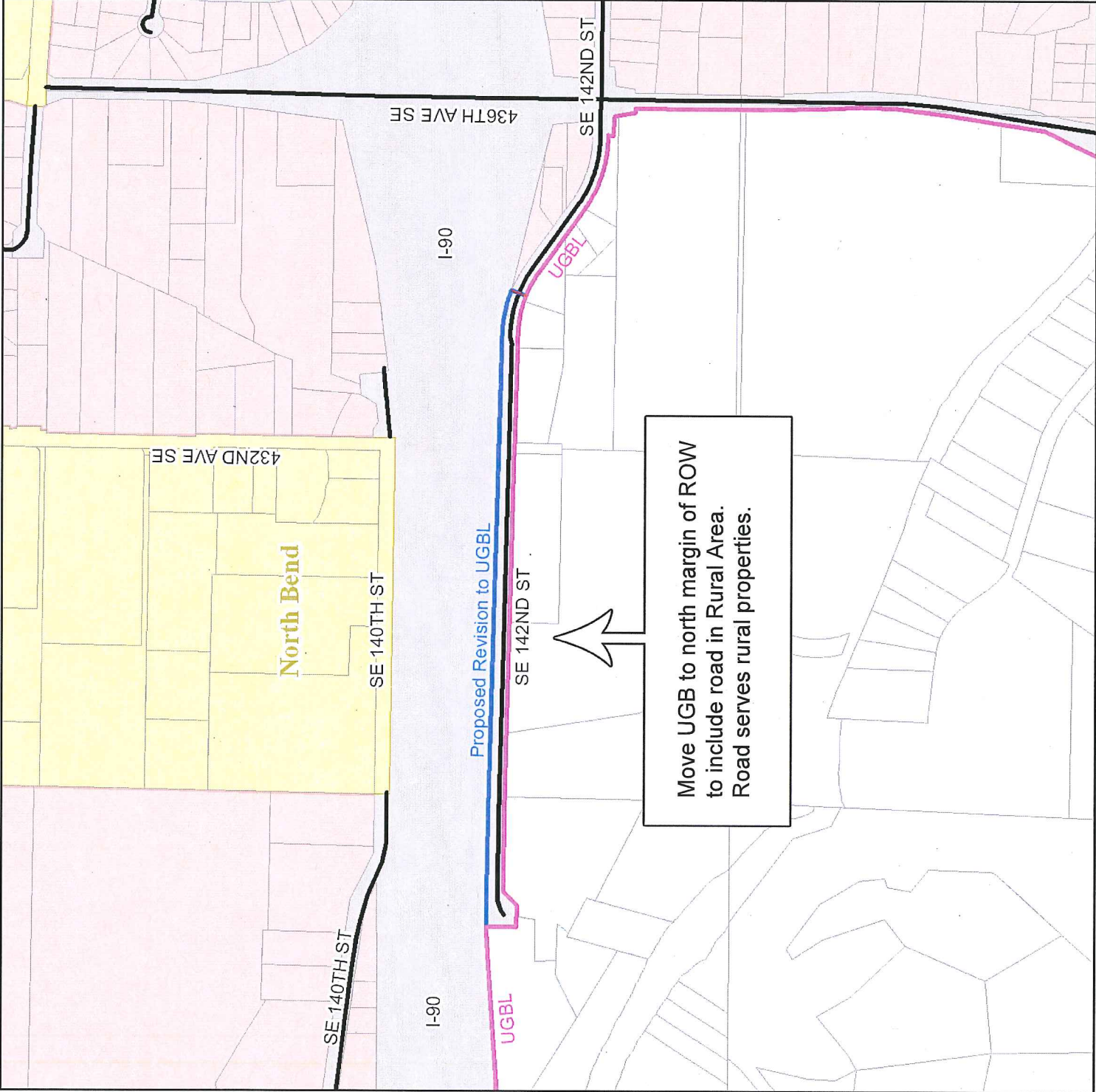
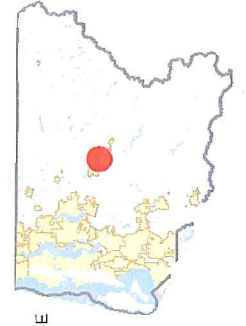


King County

250 125 0 250 500 Feet

June 21, 2011

The information included on this map has been compiled by King County staff from a variety of sources and is subject to change without notice. King County makes no representations or warranties, express or implied, as to accuracy, completeness, timeliness, or rights to the use of such information. This document is not intended for use as a survey product. King County shall not be liable for any general, special, indirect, incidental, or consequential damages including, but not limited to, lost revenues or lost profits resulting from the use or misuse of the information contained on this map. Any sale of this map or information on this map is prohibited except by written permission of King County.



Move UGB to north margin of ROW
to include road in Rural Area.
Road serves rural properties.

Proposed Revision to UGBL

For Informational Use Only

SE 150th Street

Section 24, Township 23, Range 8 E

City of North Bend

KC Maintained

Current UGBL

Proposed UGBL



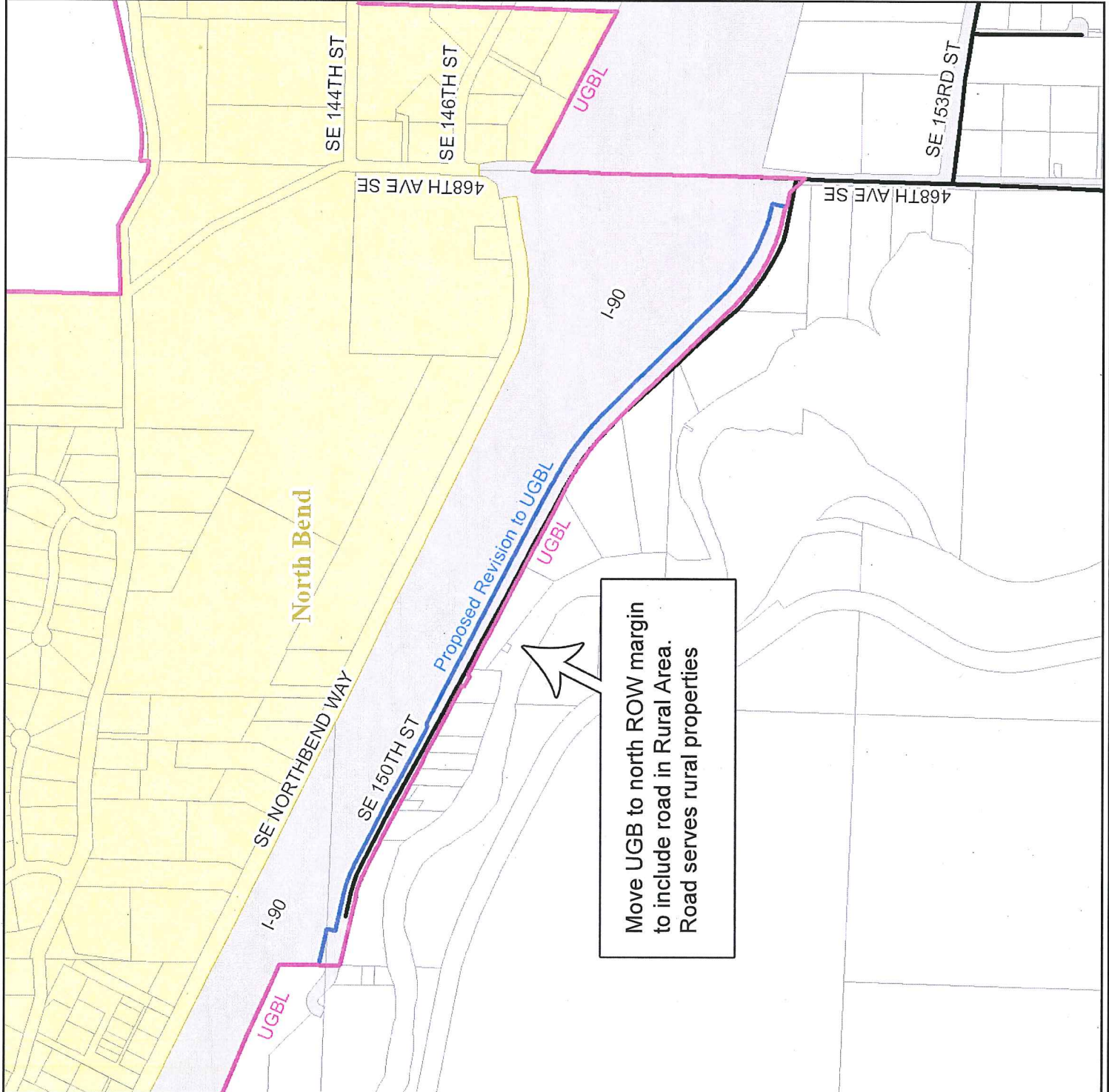
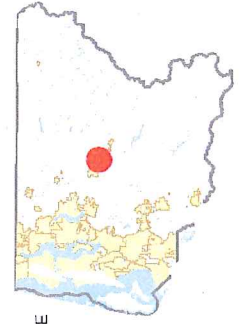
King County

250125 0 250 500 Feet



June 21, 2011

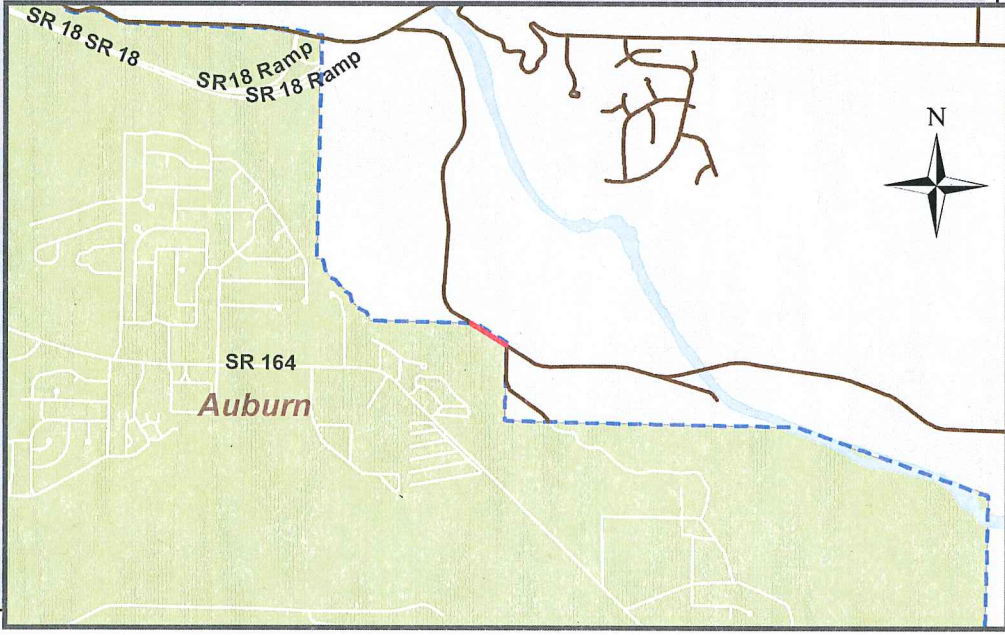
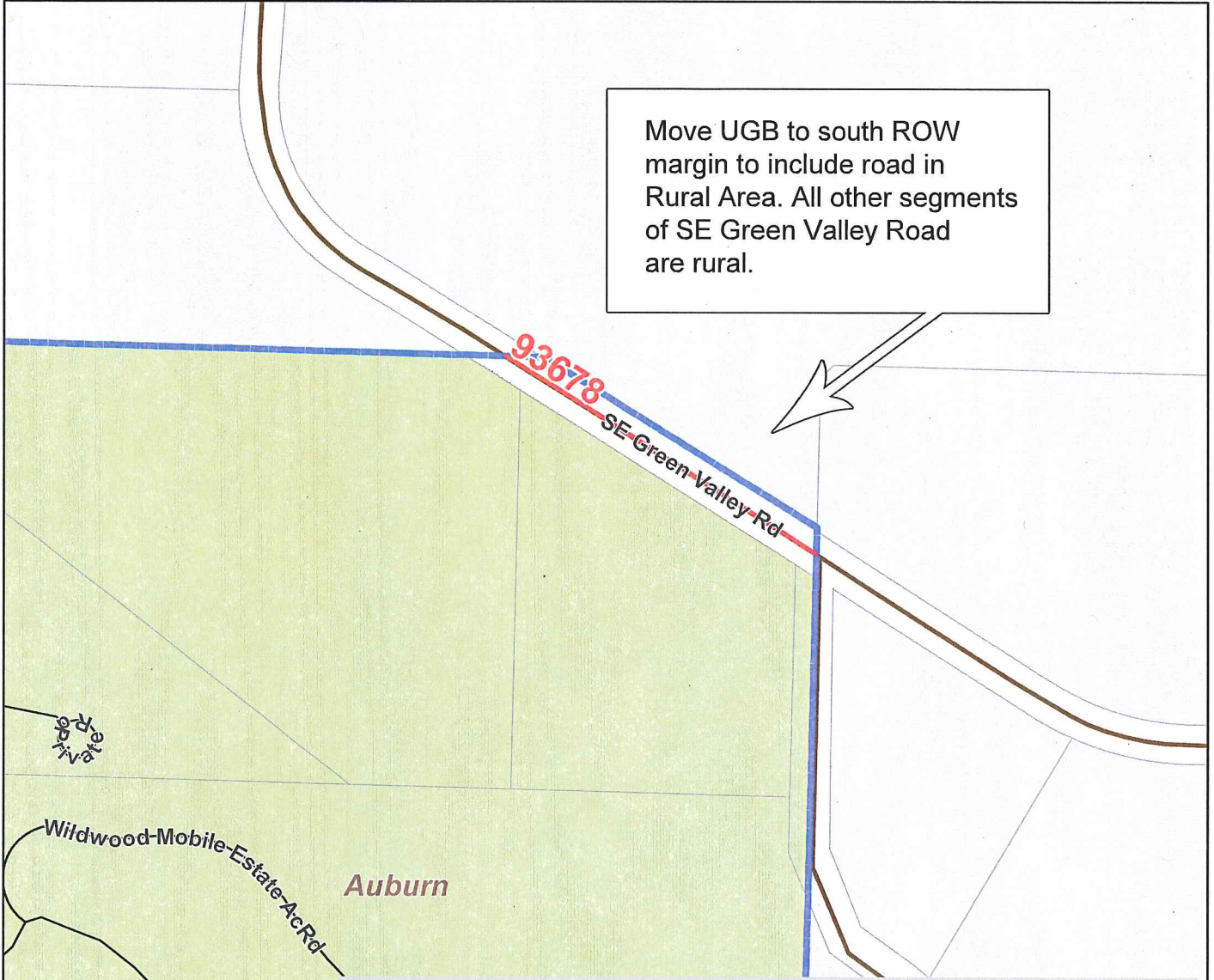
The information included on this map has been compiled by King County staff from a variety of sources and is subject to change without notice. King County makes no representations or warranties, express or implied, as to accuracy, completeness, timeliness, or rights to the use of such information. This document is not intended for use as a survey product. King County shall not be liable for any general, special, indirect, incidental, or consequential damages, including, but not limited to, lost revenues or lost profits resulting from the use or misuse of the information contained on this map. Any sale of this map or information on this map is prohibited except by written permission of King County.



Move UGB to north ROW margin to include road in Rural Area. Road serves rural properties

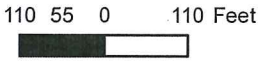
Urban Growth Boundary Right of Way Issues - SE Green Valley Road

Move UGB to south ROW margin to include road in Rural Area. All other segments of SE Green Valley Road are rural.

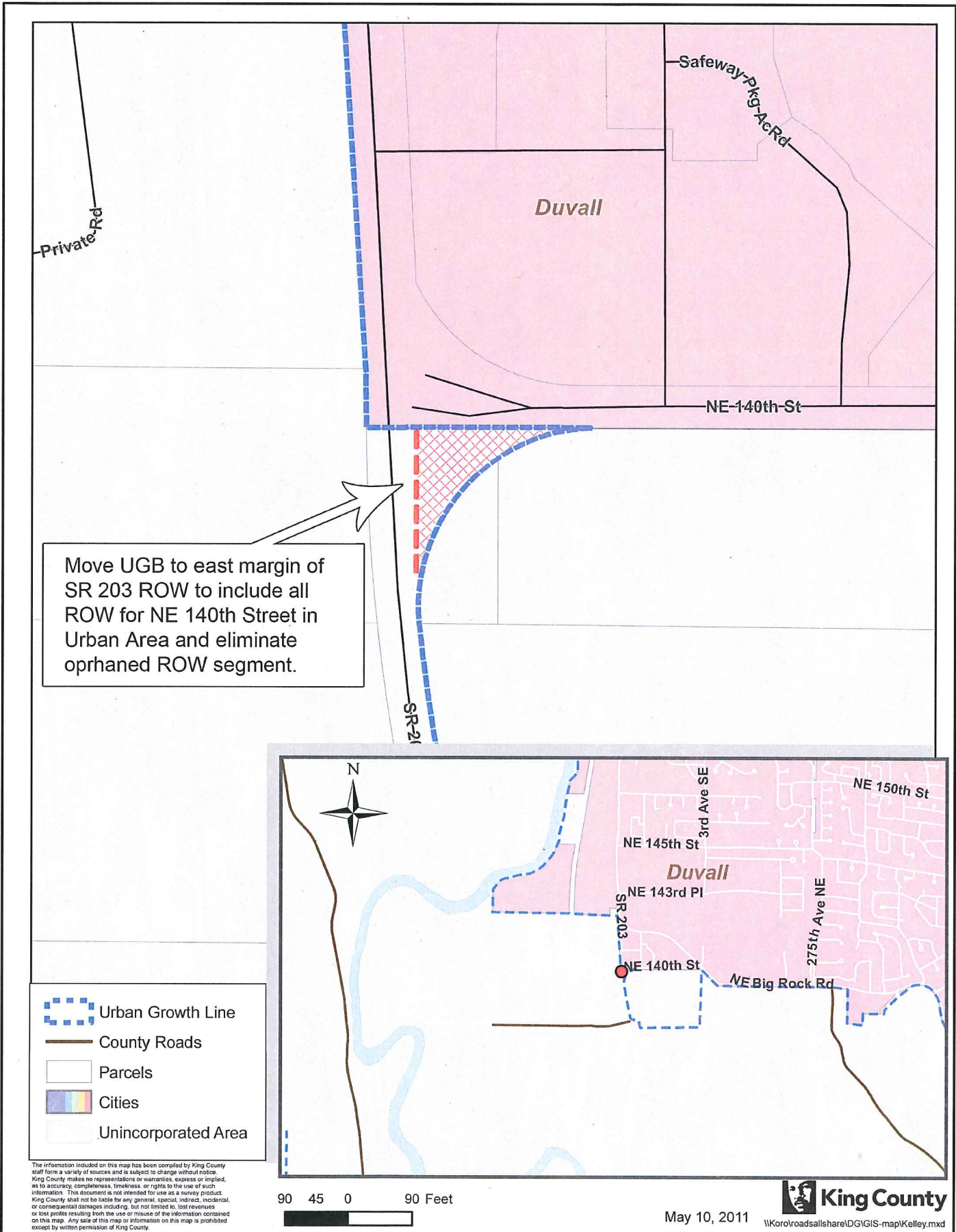


- Right of Way Issue
- Urban Growth Line
- County Roads
- Parcels
- Cities
- Unincorporated Area

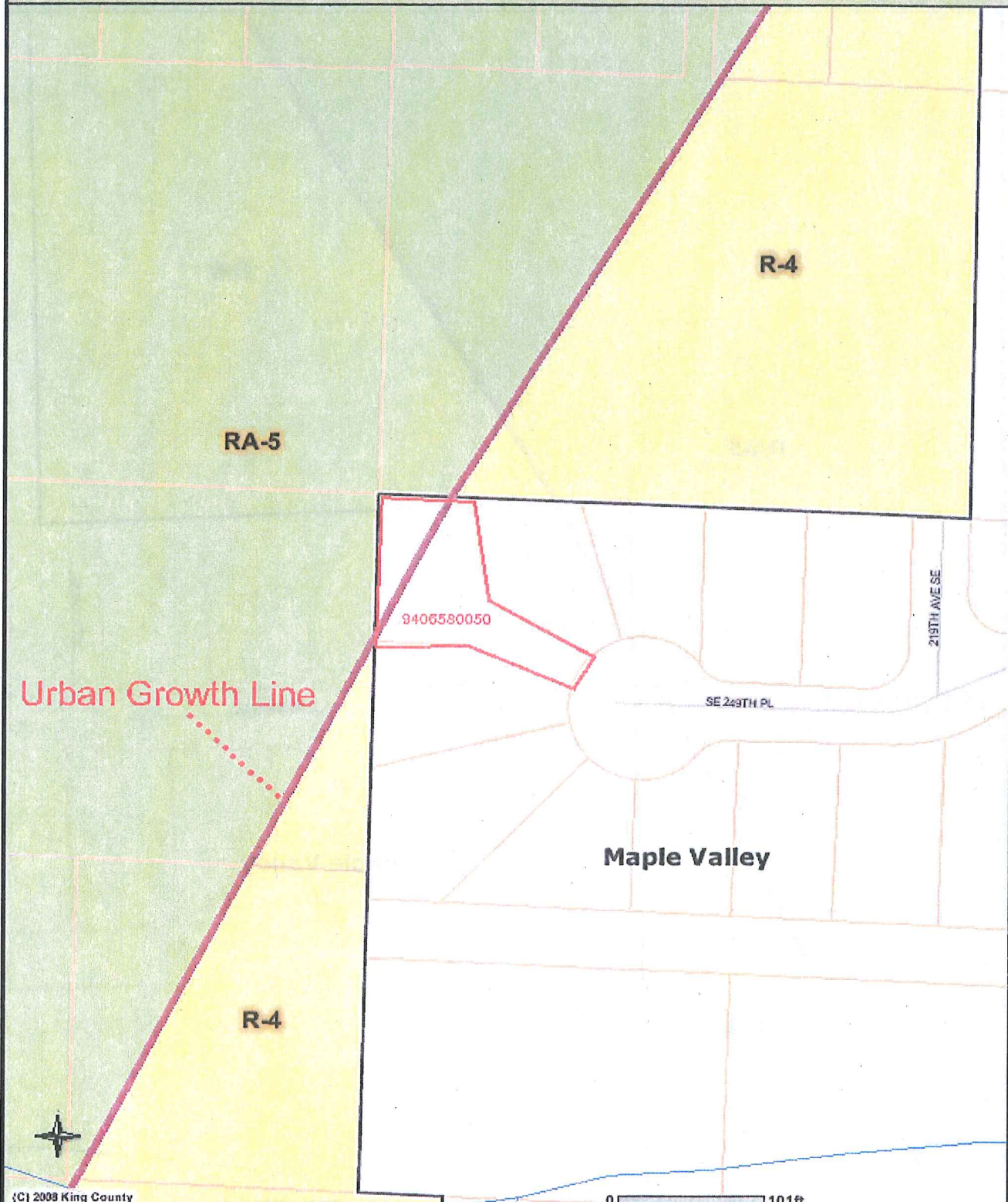
The information included on this map has been compiled by King County staff from a variety of sources and is subject to change without notice. King County makes no representations or warranties, express or implied, as to accuracy, completeness, timeliness, or rights to the use of such information. This document is not intended for use as a survey product. King County shall not be liable for any general, special, indirect, incidental, or consequential damages including, but not limited to, lost revenues or lost profits resulting from the use or misuse of the information contained on this map. Any sale of this map or information on this map is prohibited except by written permission of King County.



Urban Growth Boundary Right of Way Issues - SR 203 & NE 140th Street



Maple Valley UGA Revision



{C} 2008 King County

0 101ft

COMMENTS: Parcel 9406580050 is totally within the City of Maple Valley. However, the UGA line does not conform to the City's jurisdictional boundary.

The information included on this map has been compiled by King County staff from a variety of sources and is subject to change without notice. King County makes no representations or warranties, express or implied, as to accuracy, completeness, timeliness, or rights to the use of such information. This document is not intended for use as a survey product. King County shall not be liable for any general, special, indirect, incidental, or consequential damages including, but not limited to, lost revenues or lost profits resulting from the use or misuse of the information contained on this map. Any sale of this map or information on this map is prohibited except by written permission of King County.



Date: 8/24/2012 Source: King County iMAP - Property Information (<http://www.metrokc.gov/GIS/iMAP>)