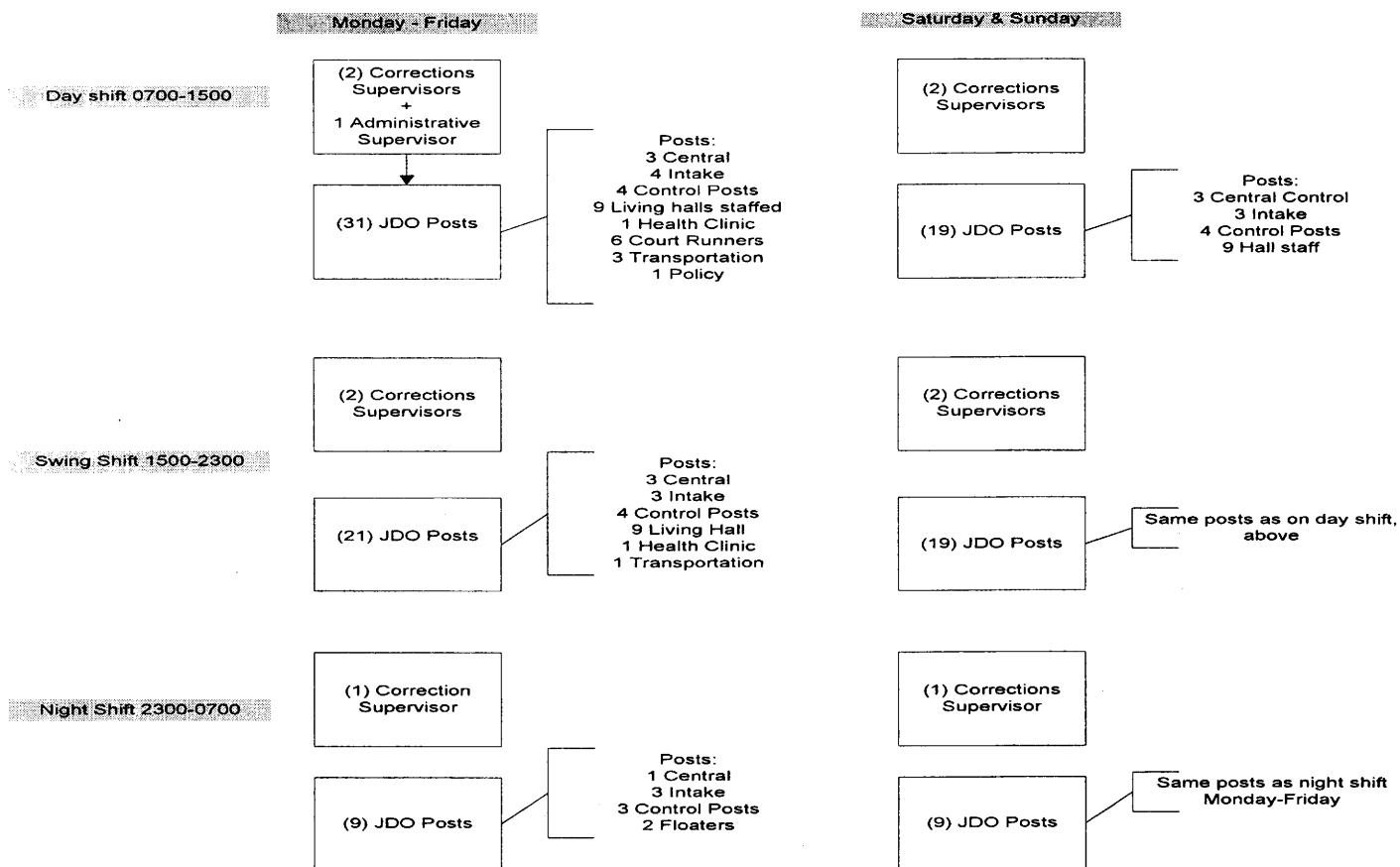


I. Operations Staff and Supervisor Assignments



Central Control: Controls movement in and out of secure detention perimeter. Monitors all security equipment and internal communications. Controls and monitors all activities related to visiting. Maintains safety and security of the Central Control area.

Intake: Processes new admits, conducts initial medical screening and searches, and inventories personal clothing and property. Processes detainees being released. Responsible for tracking detainees' locations and status while in detention. Reviews for accuracy and completes required documentation relating to admit/release/pass process. Maintains safety and security of Intake area.

Control Posts: Monitors all electronic security equipment in support of each Living Hall. Controls movement in and out of Living Halls. Conducts visual and auditory monitoring of detainees while housed in their cell. Provides back up assistance to assigned Living Halls during emergencies. Maintain safety and security of Post area.

Living Halls: Directly supervises detainees assigned to Living Hall. Conducts and monitors all required programming including school, library and physical exercise. Ensures the health, safety and welfare of detainees assigned to Living Hall. Maintains safety and security of Living Hall area.

Health Clinic: Controls movement in and out of Health Clinic area. Monitors all electronic security equipment. Conducts and documents visual and auditory monitoring of detainees housed in the Infirmary. Maintains safety and security of Health Clinic area.

Court Runners: Controls movement in and out of Court and Court Holding Area. Escorts remanded youth to Intake for processing. Transports and directly supervises detainees in court. Facilitates communication between Court, Intake and Screening. Maintains safety and security of Court area.

Transport: Transports detainees outside the secure detention perimeter. Directly supervises detainees while being transported. Maintains security equipment and vehicles. Provides break relief for dedicated posts.