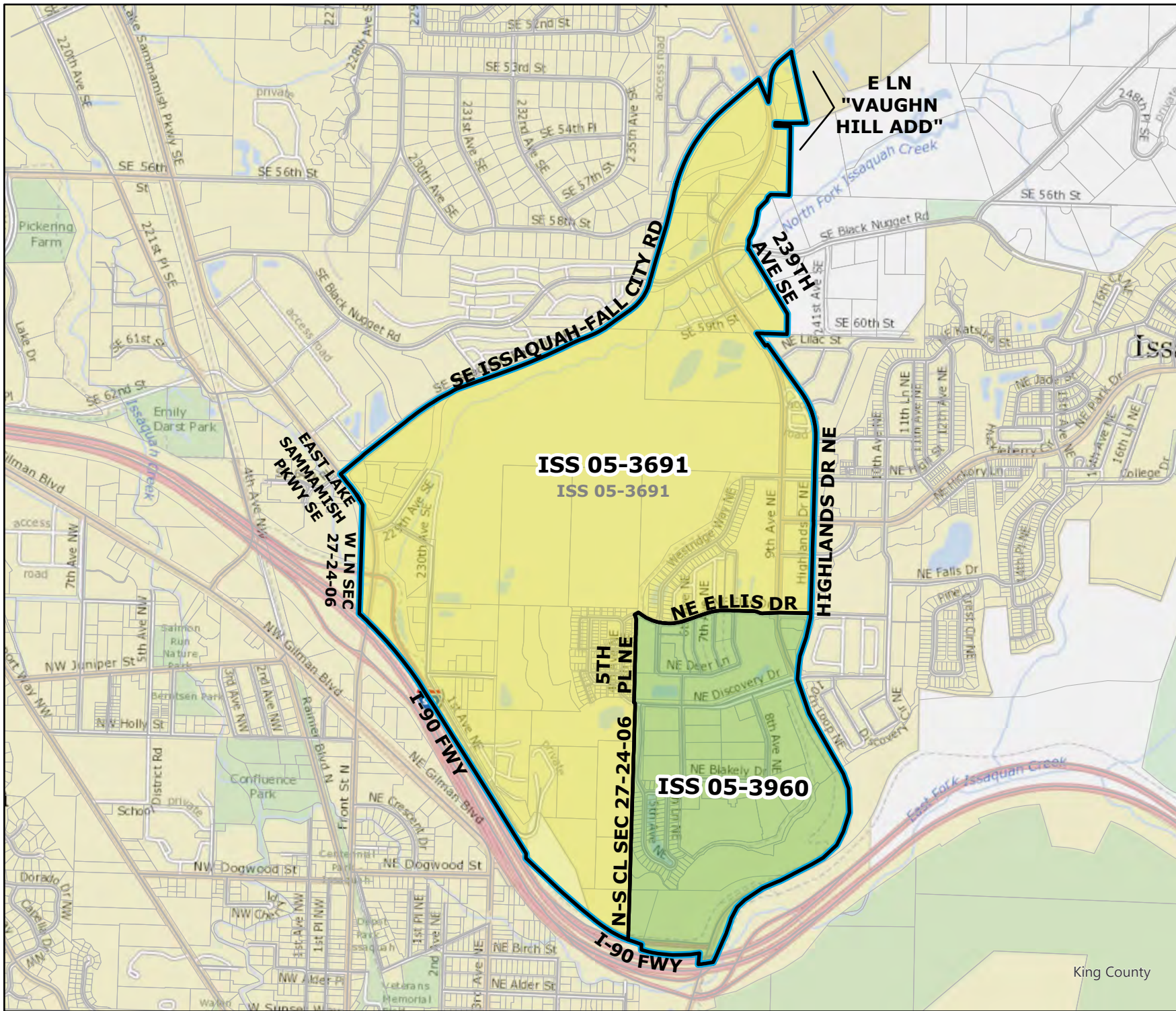


2024 Precinct Alterations

Code	Precinct Name	LG	CG	CC
3960	ISS 05-3960	5	8	3
3691	ISS 05-3691	5	8	3

Original Precinct(s)				
3691	ISS 05-3691	5	8	3

*: Denotes precinct(s) that have been abolished.
 Precinct map produced by King County GIS Elections in accordance with KCC 1.12.101 & RCW 29A.16.040



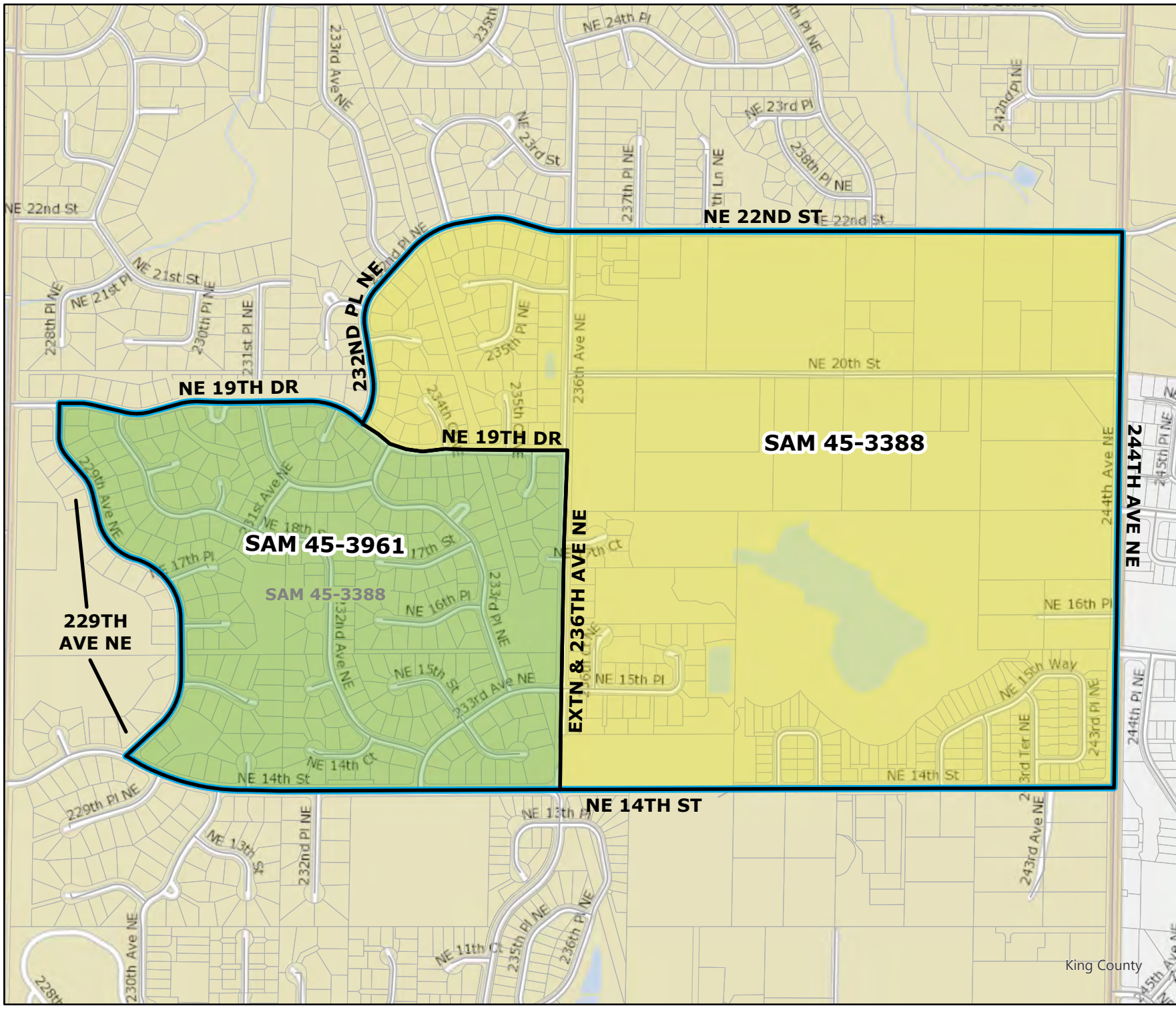
Legend

- Original Precinct(s)
- New Precinct(s)
- Altered Precinct(s)



ATTACHMENT D




2024 Precinct Alterations


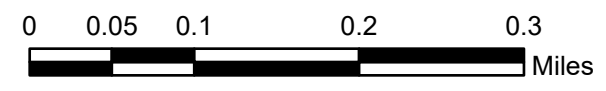


Code	Precinct Name	LG	CG	CC
3961	SAM 45-3961	45	8	3
3388	SAM 45-3388	45	8	3
Original Precinct(s)				
3388	SAM 45-3388	45	8	3

*: Denotes precinct(s) that have been abolished.
 Precinct map produced by King County GIS Elections in accordance with KCC 1.12.101 & RCW 29A.16.040

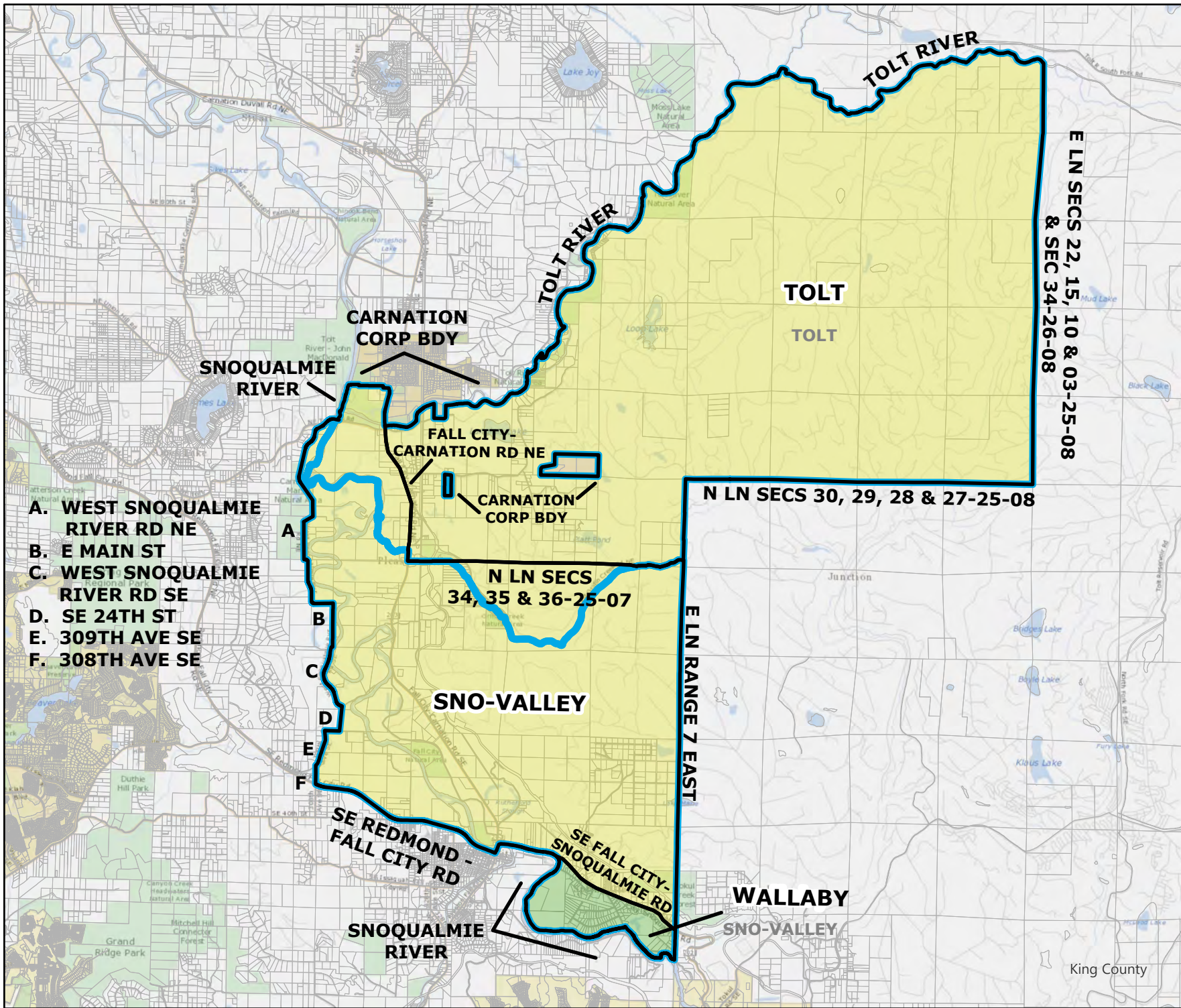
Legend

-  Original Precinct(s)
-  New Precinct(s)
-  Altered Precinct(s)

ATTACHMENT D

2024 Precinct Alterations



- A. WEST SNOQUALMIE RIVER RD NE
- B. E MAIN ST
- C. WEST SNOQUALMIE RIVER RD SE
- D. SE 24TH ST
- E. 309TH AVE SE
- F. 308TH AVE SE

Code	Precinct Name	LG	CG	CC
3978	WALLABY	12	8	3
1099	SNO-VALLEY	12	8	3
1156	TOLT	12	8	3

Original Precinct(s)				
1099	SNO-VALLEY	12	8	3
1156	TOLT	12	8	3

*: Denotes precinct(s) that have been abolished.
 Precinct map produced by King County GIS Elections in accordance with KCC 1.12.101 & RCW 29A.16.040

Legend

- Original Precinct(s)
- New Precinct(s)
- Altered Precinct(s)

