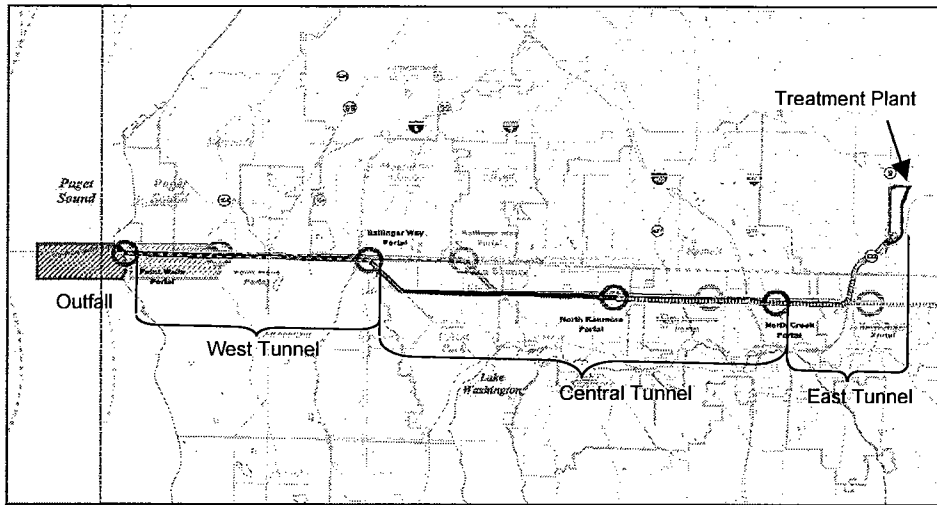


## Attachment B

# Brightwater Monthly Report

Report Template for Council Review - DATA IS ILLUSTRATIVE ONLY



Contents	Project Phase
<b>Project Summary..... 2</b>	Treatment Plant...Final Design
<b>Conveyance System..... 6</b>	East Tunnel.....Final Design
Project Description..... 6	Central Tunnel.....Final Design
Schedule..... 6	West Tunnel.....Final Design
Cost Summary..... 6	IPS.....Final Design
Cash Flow..... 7	
Cost/Budget Adjustments..... 7	
Current Activities..... 8	
Mitigation..... 8	
Schedule..... 9	
Schedule Adjustments/Issues..... 9	
Contract Status..... 9	
Detailed Cost Report..... 10	
Project Issues..... 11	
Looking Ahead..... 11	
<b>Treatment Plant.....12</b>	
Project Description..... 12	
Schedule..... 12	
Cost Summary..... 12	
Cash Flow..... 13	
Cost/Budget Adjustments..... 13	
Current Activities..... 14	
Mitigation..... 14	
Schedule..... 15	
Schedule Adjustments/Issues..... 15	
Contract Status..... 15	
Detailed Cost Report..... 16	
Project Issues..... 17	
Looking Ahead..... 17	
<b>Definitions.....19</b>	



**King County**

Department of  
Natural Resources and Parks

**Wastewater Treatment Division**

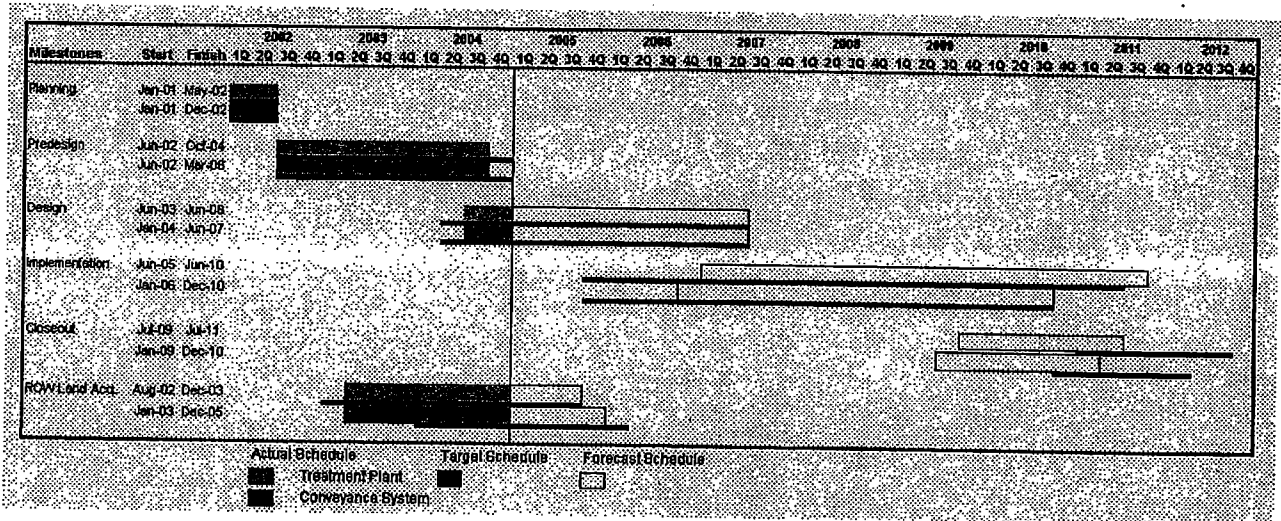
# Brightwater Project Summary

## Project Description

King County is building a new wastewater system, called Brightwater, by the year 2010. The Brightwater system will include a treatment plant to provide secondary treatment of wastewater, pipelines and a pump station to carry wastewater to and from the plant, and a marine outfall to discharge treated wastewater to Puget Sound. The project also includes connections to the existing system and odor control facilities. The need for the Brightwater system was outlined in the King County's Regional Wastewater Services Plan to provide necessary capacity to meet wastewater demand and comply with federal and state regulations in the years ahead.

## Schedule

Show progress on the Brightwater schedule, by phase, for the treatment and conveyance components of the project. (Data is for display purposes only)



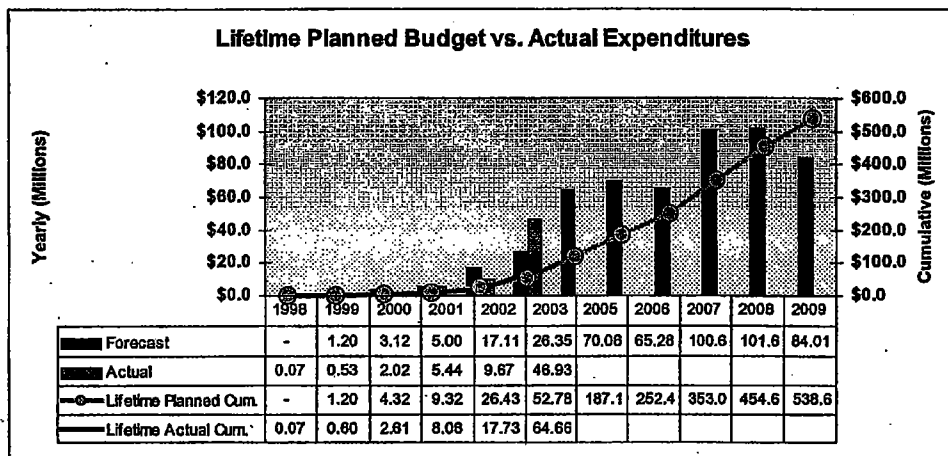
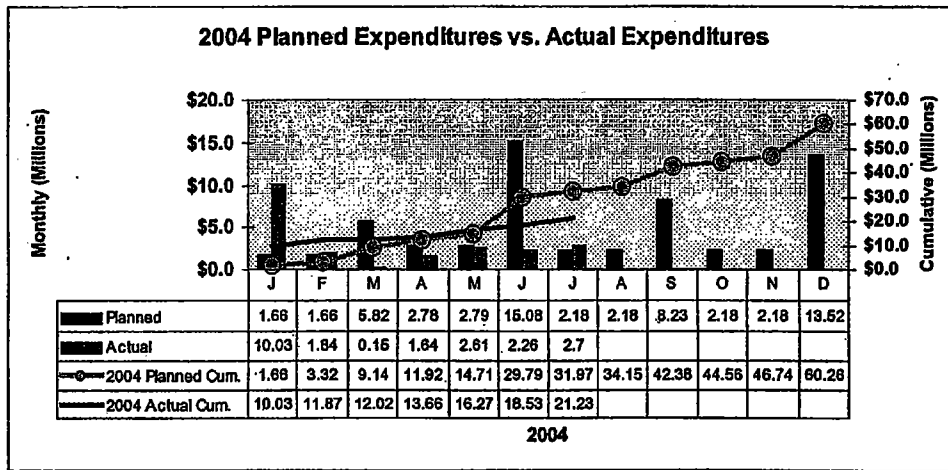
## Cost Summary

Provide an overall budget status, annual and lifetime, for the combined Brightwater project.

ITEM	Budget	Annual Expenditures and Budgeting						Lifetime Expenditures and Budgeting						
		Monthly IBIS Nov-04	Other Committed	IBIS YTD	IBIS YTD + Committed	Approved Budget	App. Budget % Spent	Annual Forecast	Forecast % Spent	IBIS LTD + Committed	2004 LTD Budget	% Bldg Spent	Current Forecast	Variance Est. Budget
<b>IMPLEMENTATION/CONSTRUCTION</b>														
Implementation/Construction		0	0	0	0	0	0.0%	0	0.0%	0	0	0.0%	0	0
<b>NON-IMPLEMENTATION/CONSTRUCTION</b>														
Engineering/Architectural/Consultant Services		0	0	0	0	0	0.0%	0	0.0%	0	0	0.0%	0	0
Permitting and Other Agency Support		0	0	0	0	0	0.0%	0	0.0%	0	0	0.0%	0	0
Right-of-Way		0	0	0	0	0	0.0%	0	0.0%	0	0	0.0%	0	0
Project Contingency		0	0	0	0	0	0.0%	0	0.0%	0	0	0.0%	0	0
<b>TOTAL NON-CONSTRUCTION COST</b>		0	0	0	0	0	0.0%	0	0.0%	0	0	0.0%	0	0
<b>TOTAL</b>		0	0	0	0	0	0.0%	0	0.0%	0	0	0.0%	0	0
<b>Credits and Revenues</b>														
Credits and Revenues		0	0	0	0	0	0.0%	0	0.0%	0	0	0.0%	0	0
<b>Project Total + Credits and Revenues</b>		0	0	0	0	0	0.0%	0	0.0%	0	0	0.0%	0	0

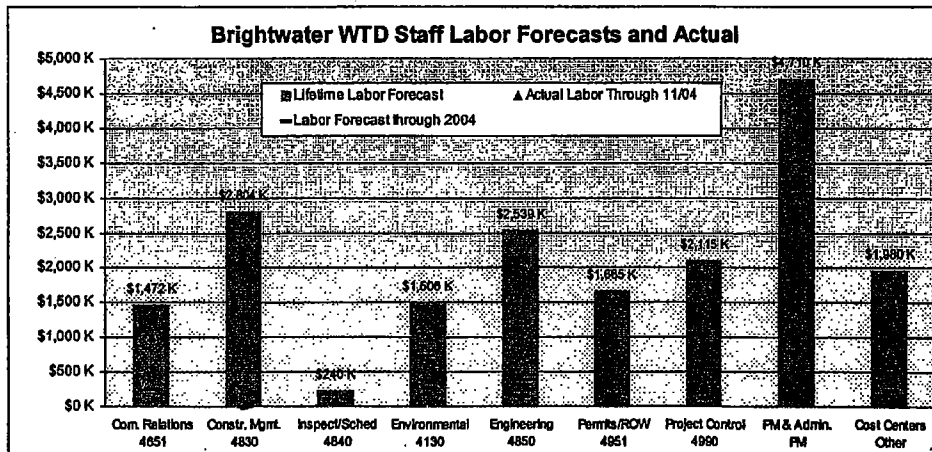
# Cash Flow

Provide the annual and lifetime cash flow for the combined Brightwater project with the following graphs. (Data is for display purposes only)



# Staff Labor

Compare the actual and forecast staff labor expenditures for the combined Brightwater project. (Data is for display purposes only)





---

## Monthly Highlights

This is where the key events that occurred during the reporting period will be summarized. Using November 2004 as an example: The Brightwater project entered the final design phase following completion of predesign in October 2004. Another important activity was developing the contract packages for constructing Brightwater. Seven contract packages were identified: east tunnel, west tunnel, central tunnel, influent pump station, marine outfall, treatment plant, and miscellaneous services.

DNRP staff also had many successes related to securing local and system-wide permits for the Brightwater project.

- A Biological Opinion was received in mid-November.
- An updated Critical Area Study was submitted to King County in November.
- An updated JARPA is being prepared as a prerequisite, and in anticipation of, receiving Hydraulic Project Approval from Washington State Department of Fish and Wildlife.
- DNRP is in the process of submitting Identification of Legal Lots as a prerequisite of building permit applications and are beginning to identify and approach ~~the~~ applying for building permits.
- Discussions are continuing with Ecology regarding the 401 Certification, CZM approval, and NPDES permit.

## Looking Ahead

Anticipated key activities in the upcoming months will be summarized here. Using November 2004 as an example:

### Conveyance System

- The Portal 46 (at the treatment plant) grading permit submission is expected in mid-December.
- The Influent Pump Station (IPS) Shoring Permits has been changed to Design Contractor responsibility from Construction Contractor responsibility with expected submission in early February 2005. This results in a 2-week schedule acceleration for the start of the IPS slurry wall construction.
- The IPS 60 percent design submittal is expected in early March.

### Treatment Plant

- Early-out cost estimating packages facilities (drawings, specifications, and vendor equipment quotes) for the treatment plant process facilities will be sent to Hoffman Construction, the GCCM, by December 17.
- The 60 percent design submittal for the treatment plant is expected in early January.

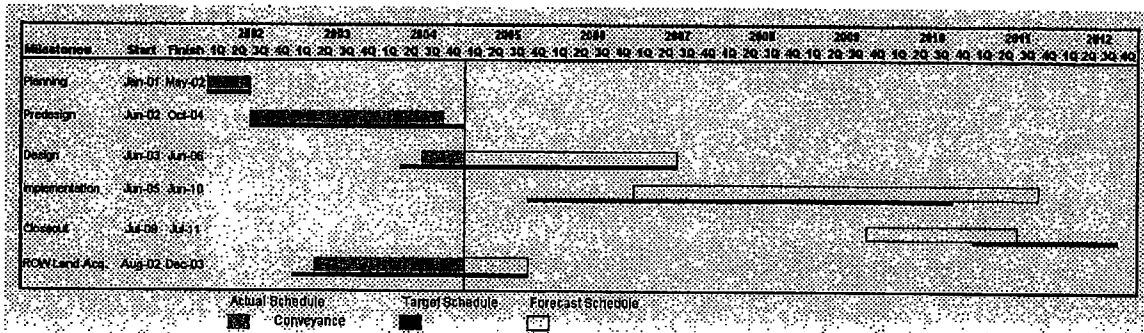
# Conveyance System

## Project Description

The Brightwater conveyance system is comprised of several facilities needed to convey wastewater to the Brightwater treatment plant and discharge treated effluent to Puget Sound. These facilities include a deep tunnel from the Brightwater Treatment Plant in Woodinville to Point Wells, a marine outfall in Puget Sound, diversion structures to collect or divert flow from exiting sewers into the new system, and odor control facilities.

## Schedule

The phase schedule provided here will be specific to the Brightwater conveyance project. (Data is for display purposes only)



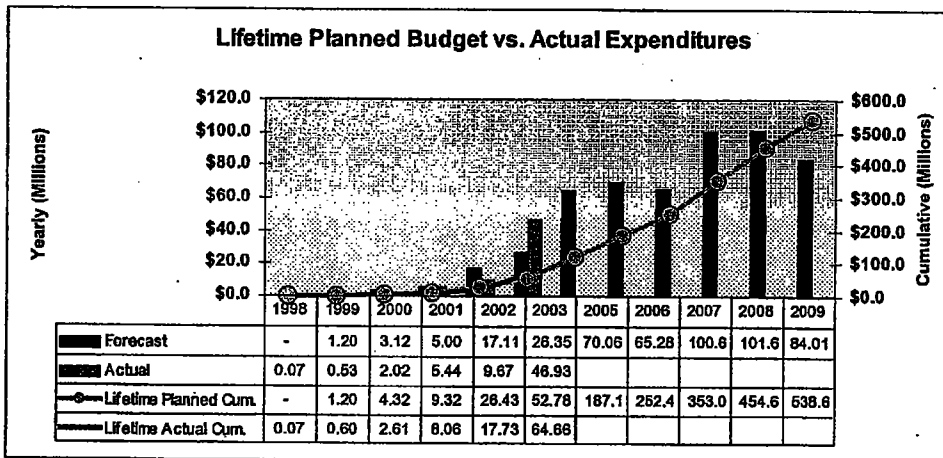
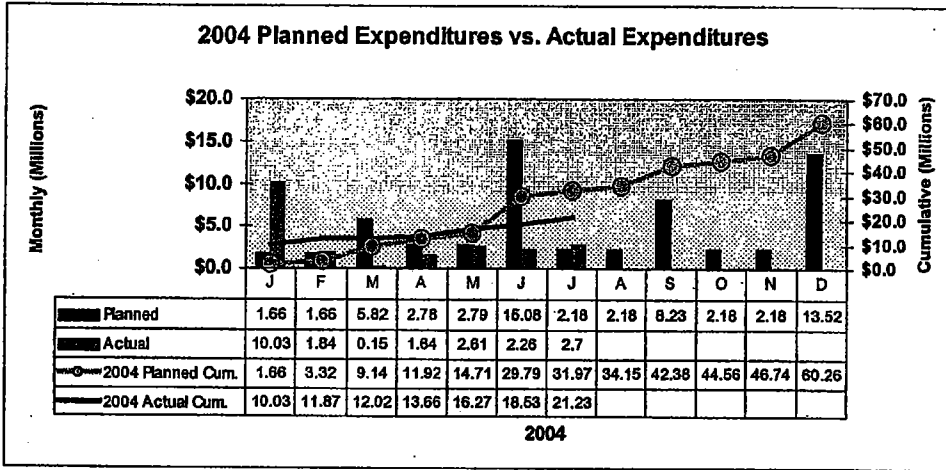
## Cost Summary

The cost report will be specific to the Brightwater conveyance project

ITEM	Budget Budget	Annual Expenditures and Budgeting						Lifetime Expenditures and Budgeting						
		Monthly IBS Not-Of	Other Commenc	IBIS YTD	IBIS YTD % Complete	Approved Budget	App. Budget % Spent	Actuals Percent	Forecast % Spent	IBIS LTD	IBIS LTD % Budget	% Bldg	Current Forecast	Variance From Budget
<b>IMPLEMENTATION/CONSTRUCTION</b>														
Implementation/Construction	0	0	0	0	0	0	0.0%	0	0.0%	0	0	0.0%	0	0
<b>NON-IMPLEMENTATION/CONSTRUCTION</b>														
Engineering/Professional/Consultant Services	0	0	0	0	0	0	0.0%	0	0.0%	0	0	0.0%	0	0
Permits and Other Agency Support	0	0	0	0	0	0	0.0%	0	0.0%	0	0	0.0%	0	0
Right-of-Way	0	0	0	0	0	0	0.0%	0	0.0%	0	0	0.0%	0	0
Project Contingency	0	0	0	0	0	0	0.0%	0	0.0%	0	0	0.0%	0	0
<b>TOTAL NON-CONSTRUCTION COST</b>	0	0	0	0	0	0	0.0%	0	0.0%	0	0	0.0%	0	0
<b>TOTAL</b>	0	0	0	0	0	0	0.0%	0	0.0%	0	0	0.0%	0	0
Credits and Revenues	0	0	0	0	0	0	0.0%	0	0.0%	0	0	0.0%	0	0
<b>Project Total = Credits and Revenues</b>	0	0	0	0	0	0	0.0%	0	0.0%	0	0	0.0%	0	0

# Cash Flow

Provide the annual and lifetime cash flow for the conveyance system with the following graphs. (Data is for display purposes only)



## Cost/Budget Adjustments

This section is to present information related to project costs and budget such as updated cost trends or commodity price increases. For example:

The cost performance basis is the 30 percent design estimates (predesign) that were developed in October 2004. Some components of the Brightwater conveyance are now nearing completion of 60 percent design; updated cost trends will be reported for those components.

## **Current Activities**

The key monthly activities under the design process, permitting, and for the various construction contracts will be described here. These descriptions will correspond to the schedule activities shown on the opposite page.

### **Conveyance Design**

Describe key design activities for the month.

### **Local Permits**

Describe key permitting activities for the month

### **East Tunnel Contract**

Describe key monthly activities for East Tunnel

### **West Tunnel Contract**

Describe key monthly activities for West Tunnel

### **Central Tunnel Contract**

Describe key monthly activities for Central Tunnel

### **Influent Pump Station Contract**

Describe key monthly activities for Influent Pump Station

### **Marine Outfall Contract**

Describe key monthly activities for Marine Outfall

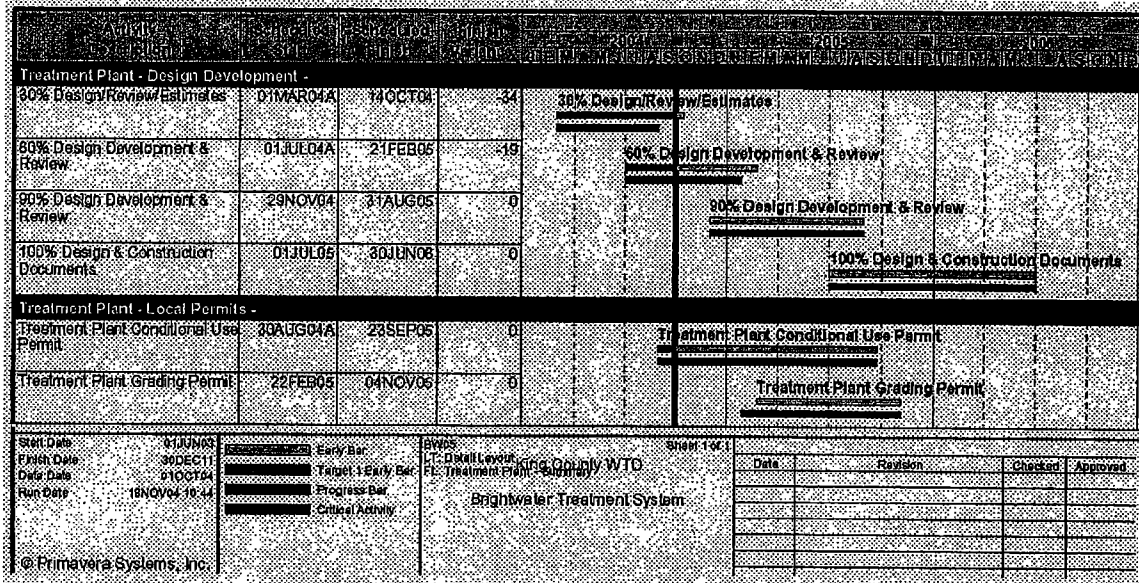
## **Mitigation**

Discuss mitigation spending here.



# Schedule

Show the detailed schedule for on-going activities during the reporting period based on the layout below. The schedule activities are described under the Current Activities heading on the opposite page. (Data is for display purposes only)



# Schedule Adjustments/Issues

Schedule adjustments and issues for the conveyance system will be described here.

# Contract Status

The fiscal status of on-going conveyance contracts is summarized using the following format.

Contract	Contract Value	Contract Start	Contract End	Contract Status	Contract Amount	Contract Balance	Contract Change	Contract Total
Construction Management Contract	\$0	0	0	0%	\$0	\$0	0%	\$0
Design Contract	\$0	0	0	0%	\$0	\$0	0%	\$0
Construction Package 1	\$0	0	0	0%	\$0	\$0	0%	\$0
Construction Package 2	\$0	0	0	0%	\$0	\$0	0%	\$0
Construction Package 3	\$0	0	0	0%	\$0	\$0	0%	\$0
Construction Package 4	\$0	0	0	0%	\$0	\$0	0%	\$0
Legal Services	\$0	0	0	0%	\$0	\$0	0%	\$0



## Project Issues

Issues that may affect the project scope, schedule, or budget are described here. For example:

- There is a potential for delay in the issuance of some of local/State Permits due to the development of a supplemental environmental impacts statement to address seismic issues at the treatment plant site.
- Acquisition of the Portal 44 property potentially impacts submission of the grading permit package for the Central Tunnel. The Grading Permit package is scheduled for submission in May 2005.
- The Swamp Creek Microtunnel Easement requirements are not yet defined.
- Alignment of IPS design tasks included in the East Tunnel Construction Contract to meet the scheduled bid date.

## Looking Ahead

Anticipated key activities in the upcoming months will be summarized here. For example:

- The Portal 46 grading permit submission is expected in mid-December.
- The IS and IPS Shoring Permits have been changed to Design Contractor responsibility from Construction Contractor responsibility with expected submission in early February 2005. This results in a 2 week schedule acceleration for the start of the IS and IPS slurry wall construction.
- The IPS 60 percent design submittal is expected in early March.

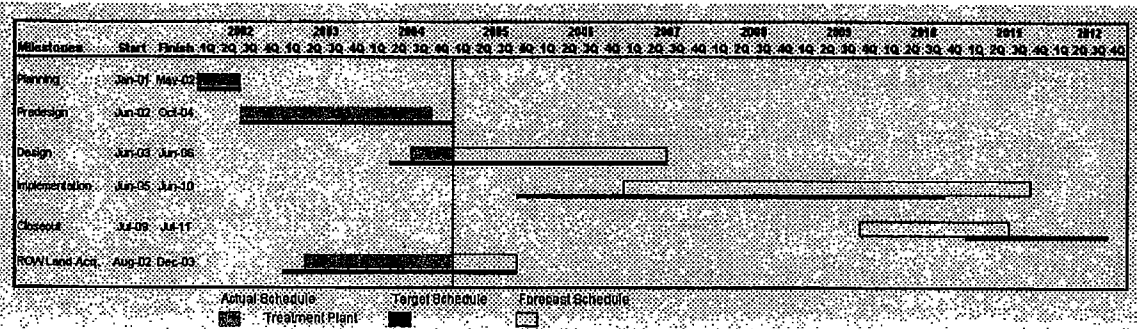
# Treatment Plant

## Project Description

This Brightwater Treatment Plant is a new wastewater treatment facility to be located at the Route 9 site in Woodinville. The Brightwater plant will provide 36 million gallons per day (mgd) of treatment capacity (average wet weather flow) by 2010 and 54 mgd of capacity by 2040. The Brightwater plant includes membrane secondary treatment systems, Class B biosolids production, odor control systems, and disinfection.

## Schedule

The phase schedule provided here will be specific to the Brightwater treatment plant. (Data is for display purposes only)

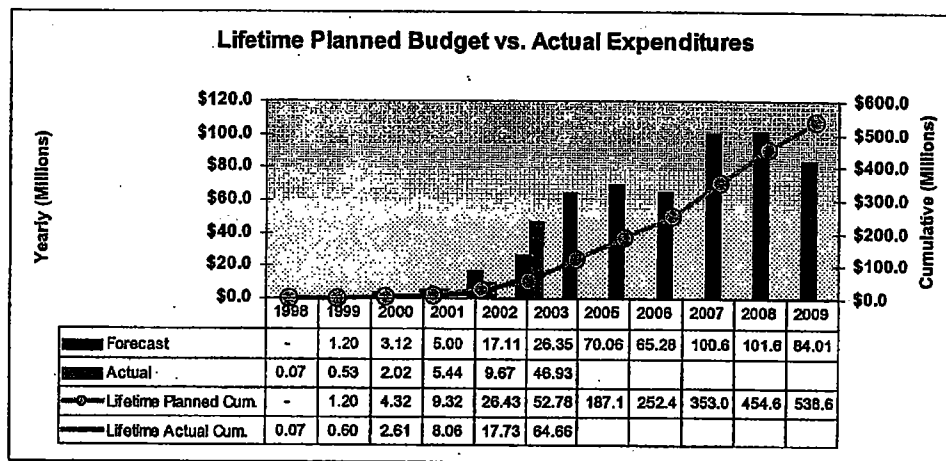
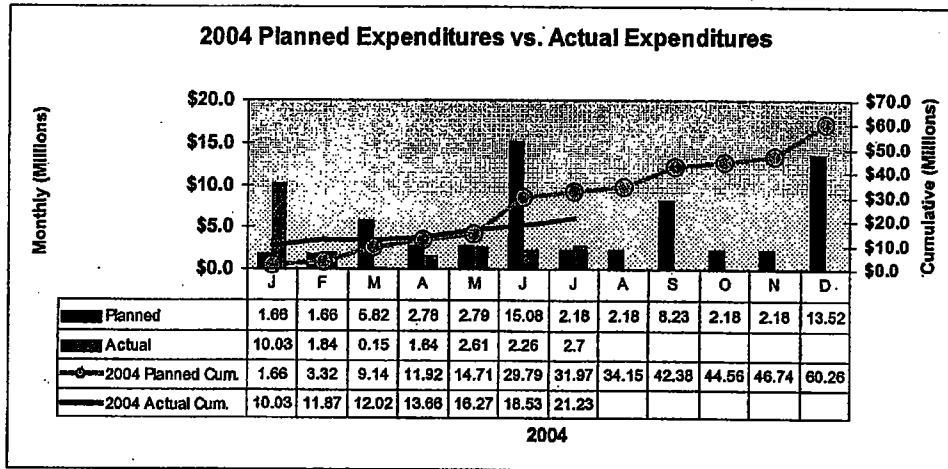


## Cost Summary

ITEM	Baseline Budget	Annual Expenditures and Budgeting						Lifetime Expenditures and Budgeting						
		Monthly IBIS Nov-04	Other Complete	IBIS YTD	IBIS YTD % Complete	Appropriated Budget	App. Budget % Spent	Annual Forecast % Spent	IBIS LTD % Committed	2004 LTD Budget	2004 LTD % Spent	Forecast % Budget	Variance	
<b>IMPLEMENTATION/CONSTRUCTION</b>														
Implementation/Construction		0	0	0	0	0	0.0%	0	0.0%	0	0	0.0%	0	0
<b>NON-IMPLEMENTATION/CONSTRUCTION</b>														
Engineering/Professional/Consultant Services		0	0	0	0	0	0.0%	0	0.0%	0	0	0.0%	0	0
Permitting and Other Agency Support		0	0	0	0	0	0.0%	0	0.0%	0	0	0.0%	0	0
EM&C at Risk		0	0	0	0	0	0.0%	0	0.0%	0	0	0.0%	0	0
Project Contingency		0	0	0	0	0	0.0%	0	0.0%	0	0	0.0%	0	0
<b>TOTAL NON-CONSTRUCTION COST</b>		0	0	0	0	0	0.0%	0	0.0%	0	0	0.0%	0	0
<b>TOTAL</b>		0	0	0	0	0	0.0%	0	0.0%	0	0	0.0%	0	0
<b>Credits and Revenues</b>		0	0	0	0	0	0.0%	0	0.0%	0	0	0.0%	0	0
<b>Project Total - Credits and Revenues</b>		0	0	0	0	0	0.0%	0	0.0%	0	0	0.0%	0	0

# Cash Flow

Provide the annual and lifetime cash flow for the Brightwater treatment plant with the following graphs. (Data is for display purposes only)



## Cost/Budget Adjustments

This section is to present information related to project costs and budget such as updated cost trends or commodity price increases. For example:

The cost performance basis is currently the 30 percent design estimates (predesign) that were developed in October 2004. Much of the Brightwater project is now nearing completion of 60 percent design for and updated cost trends are expected early in 2005.

## **Current Activities**

The key monthly activities under the design process, permitting, and for the various construction contracts will be described here. These descriptions will correspond to the schedule activities shown on the opposite page.

### **Treatment Plant Design**

Describe key design activities during the reporting period.

### **Local Permits**

Describe key permit activities during the reporting period. For example:

- Received Demolition Permits on two Route 9 site properties: Wild Mustang Ranch and Bear Creek Grange. Additional Demolition Permit applications are being prepared.
- A meeting was held on 12/2/04 to coordinate between the treatment plant site and Portal 46, including Grading Permit application(s).
- King County is to further consider Snohomish County CUP process in determining if a single Grading Permit for the treatment plant site will be made, or if there will be one for the plant site and one for Portal 46.
- A Grading Permit application is nearly ready for Portal 46. The North 40 Grading Permit application will be submitted on January 5 and the treatment plant in April 2005.

### **Treatment Plant Construction Contract**

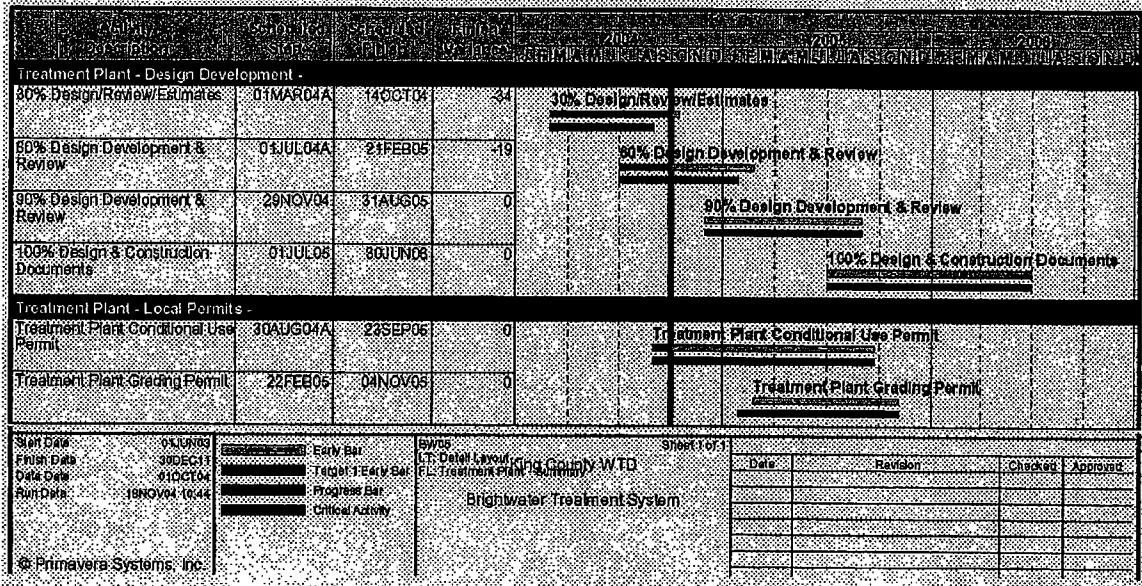
Describe key activities for the reporting period for the treatment plant construction contract.

## **Mitigation**

Discuss mitigation spending here.

## Schedule

Show the detailed schedule for on-going activities during the reporting period based on the layout below. The schedule activities are described under the Current Activities heading on the opposite page (Data is for display purposes only)



## Schedule Adjustments/Issues

Schedule adjustments and issues for the treatment plant are described here.

## Contract Status

The fiscal status of on-going treatment plant contracts is summarized using the following format.

Contract	Amount	Spent	%	Balance	Amount	Spent	%	Balance
Construction Management Contract	\$0	\$0	0%	0	\$0	\$0	0%	\$0
Design Contract	\$0	\$0	0%	0	\$0	\$0	0%	\$0
Construction Package 1	\$0	\$0	0%	0	\$0	\$0	0%	\$0
Construction Package 2	\$0	\$0	0%	0	\$0	\$0	0%	\$0
Construction Package 3	\$0	\$0	0%	0	\$0	\$0	0%	\$0
Construction Package 4	\$0	\$0	0%	0	\$0	\$0	0%	\$0
Legal Services	\$0	\$0	0%	0	\$0	\$0	0%	\$0







## **Project Issues**

Issues that may affect the project scope, schedule, or budget are described here. For example:

- There is a potential for delay in the issuance of some of local/State Permits due to the development of a supplemental environmental impacts statement to address seismic issues at the treatment plant site.
- Acquisition of the Portal 44 property potentially impacts submission of the grading permit package for the Central Tunnel. The Grading Permit package is scheduled for submission in May 2005.
- The Swamp Creek Microtunnel Easement requirements are not yet defined.
- Alignment of IPS design tasks included in the East Tunnel Construction Contract to meet the scheduled bid date.

## **Looking Ahead**

Anticipated key activities in the upcoming months will be summarized here. For example:

- Early-out cost estimating packages facilities (drawings, specifications, and vendor equipment quotes) for the treatment plant process facilities will be sent to Hoffman Construction, the GCCM, by December 17, 2004.
- The 60 percent design submittal for the treatment plant is expected in early January.

# Definitions

Here is where we'll define all the terms, tables, and graphs used in this report.