

Supplemental information on Question 1 from Batch 6 (March 12, 2025)

1. See below for the requested detailed information on the levy investments in the Woodland Park Zoo and Seattle Aquarium.

Woodland Park Zoo

Can you provide data on whether the current levy helped to increase access to these venues?

As a requirement for receiving proceeds from the King County Parks Levy the Woodland Park Zoo (WPZ) provides King County an annual report setting forth a summary of zoo operations and the service provided for the preceding year, along with a general summary of the WPZ's operations and financial accounting for all funds, including use of levy proceeds and a listing of all projects that were funded by levy proceeds.

Below is a summary of visitor data in 2023, which is the last reporting year submitted by WPZ. Please note that data for 2024 will be provided to King County no later than May 31, 2025. A copy of the most recent annual report (2023) has been provided as an attachment titled "WPZ 2023 King County Parks Levy Annual Narrative and Spending Report.pdf".

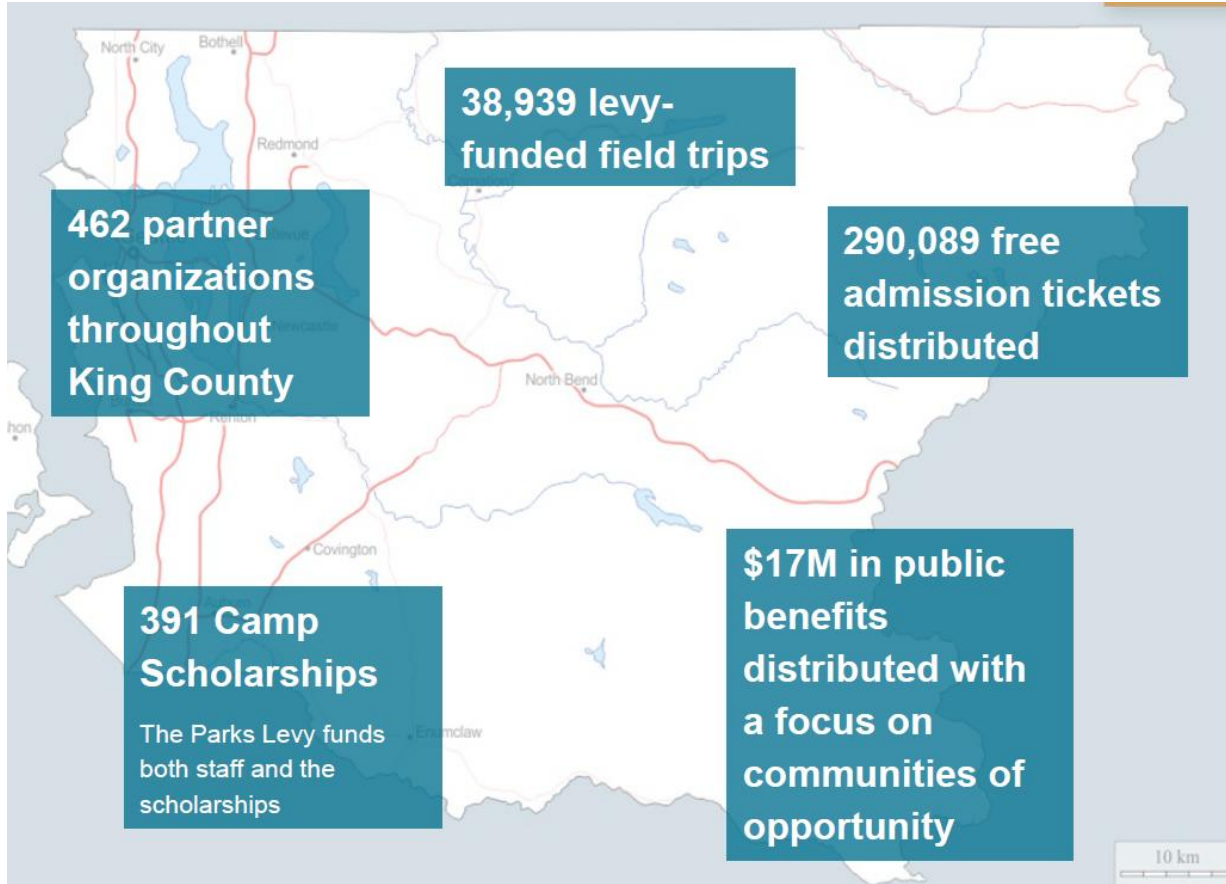
- Total attendance: 1,347,579
- Community Access Program free admission tickets distributed to community organizations across King County: 378 partners; 80,768 tickets
- Member households in King County: 20,898
- Number of students and chaperones who visited the zoo at no cost with Levy-supported free group admissions on school field trips: 18,615 (\$193,411)
- Levy – supported transportation reimbursements for school field trips: 97 Schools (\$53,212)
- King County Library Museum and Park Passes redeemed: 1,182

In addition to annual reporting requirements, the Woodland Park Zoo presents to the Parks Levy Oversight Board each year as part of the Board's review of King County expenditures of levy proceeds. More information about how WPZ spends levy proceeds can be found by reviewing the meeting materials of the Parks Levy Oversight Board:

- 2023 Review of Levy Expenditures: [Meeting 3 \(October 13, 2024\)](#)
- 2022 Review of Levy Expenditures: [Meeting 3 \(October 12, 2023\)](#)
- 2021 Review of Levy Expenditures: [Meeting 4 \(November 9, 2022\)](#)
- 2020 Review of Levy Expenditures: [Meeting 4 \(October 26, 2021\)](#)

In addition to annual reporting to King County and presentations to the Parks Levy Oversight Board, WPZ has provided additional data on how it increases access through its programming and activities.

Overview of public benefits to King County (2020-2024)



Overview of visitors (2020-2024)

	South & Central Seattle	Auburn & Federal Way	Renton & Kent	Burien, Tukwila & SeaTac
Tickets distributed:	88,715**	25,406	19,998	15,123
# of Partners:	123**	50	64	15
Partner highlight:	Treehouse	Refugee Resettlement Office	Kent Youth and Family Services	Southwest Youth and Family Services
Tickets to highlighted partner:	2,390	500	2,860	1,600
Partner's service demographics:	Essential support for youth in foster care. This demographic faces overwhelming financial and systemic barriers. 66% identify as of-color or non-white	Helping newcomers, citizens, and the working poor achieve economic self-sufficiency.	In 2022, 4% of their preschool population were homeless 66% were non- or limited English speaking 7% identified with a disability and 85% identify as of-color	95% of program participants identify as low income 90% as Black, Indigenous, and People of Color 50% as immigrant, refugee, or asylee.

* This data is from 2020-2024 but should be understood to be lower than usual because of the pandemic from 2020-2022.

** Several large organizations are headquartered in this area but have a broad service area across the county.

What is the plan going forward to increase access to these venues? How can we better address equitable access to these venues? What information do you have on this?

WPZ has informed Parks that it will continue to support the ongoing projects/activities to increase access to the community that are currently funded by levy proceeds as described above. Parks recommends a direct request to WPZ for any additional detail on the proposed future levy period,

Please provide more detail about what current levy money has been spent on and what proposed levy money would be spent on (for example, zoo annual reports).

Below is a detailed summary of levy proceeds that were spent by WPZ in the most recent annual report (2023). Proposed levy proceeds will be spent on programs and activities that align with current and future efforts towards environmental education with an emphasis on accessibility to traditionally underserved areas and communities including people with disabilities, horticulture and maintenance of buildings and grounds, conservation of threatened species, and development of conservation and education strategies to mitigate impacts to animals and habitats from climate change.

**2023 KING COUNTY LEVY SPENDING
Annual Report due May 31, 2024**

Environmental Education:

Guest and Volunteer Engagement Programs	775,192
Youth and Adult Learning Programs	689,439
Program Funded Admissions and Transportation for School to Zoo	193,411
Education Program Registration and Management, Program Development	285,089
Visitor Research and Program Evaluation	79,190
Empathy Initiatives	263,924
Creative Services/Signage	302,556
Zoo Keeper Talks and Tours, Animal Ambassador Programs	899,344
Website development and support	143,555
Information Technology Support of Zoo Programs	273,240

Subtotal, Environmental Education 3,904,938

Horticulture and Maintenance of Buildings and Grounds: 857,249

Conservation of Threatened Species:

Field Conservation Programs	154,297
Animal Care for Threatened Species	1,701,532

Subtotal, Conservation of Threatened Species 1,855,829

Development of Conservation and Education Strategies to mitigate the impacts on animals and habitats from climate change. 149,000

TOTAL KING COUNTY SPENDING 6,767,016

FUNDING RECEIVED FROM KING COUNTY FOR 2023 \$ 6,767,016

Please provide more information on who is using the programs and how aware they are of them. What visitor/usage data do you have? Where do the users come from?

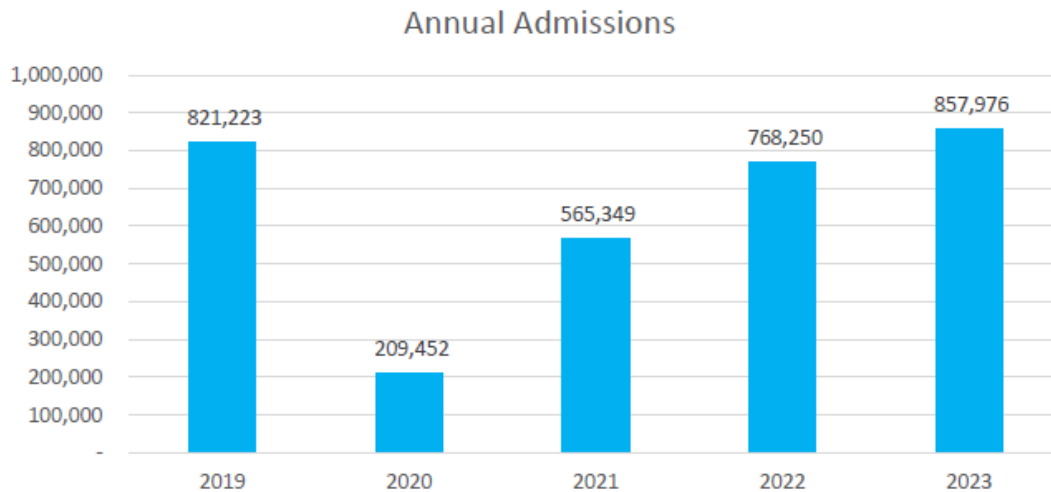
More detailed information about where users come from can be found in the most recent annual report and information provided above.

Seattle Aquarium

Can you provide data on whether the current levy helped to increase access to these venues?

As a requirement for receiving proceeds from the King County Parks Levy, the Seattle Aquarium (“Aquarium”) provides King County an annual report setting forth a summary of the operations of the Aquarium and the services provided at the Aquarium for the preceding year, along with a general summary of the Aquarium’s operations and a complete financial accounting for all funds. This includes the use of levy proceeds used in the Ocean Pavilion project which opened to the public in August 2024.

The levy commitment in the current King County Parks Levy was \$8 million solely towards the construction of the new Ocean Pavilion. Data on how these levy proceeds helped increase access to the Aquarium through this project can be found in the most recent annual report (2023) which has been provided as an attachment titled, “2023 Seattle Aquarium Summary.pdf”. This includes a summary of overall annual admissions to the Aquarium which can be found below. In 2023 the Aquarium welcomed over 850,000 guests and expect to see 1.2 million visitors in future years with the new Ocean Pavilion.



In addition to annual reporting requirements the Aquarium presents to the Parks Levy Oversight Board each year as part of the Board’s review of King County expenditures of levy proceeds. More information about how the Aquarium spends levy proceeds can be found by reviewing the meetings materials of the Parks Levy Oversight Board:

- 2023 Review of Levy Expenditures (presentation slides): [Meeting 3 \(October 13, 2024\)](#)
 - 2022 Review of Levy Expenditures (meeting minutes): [Meeting 3 \(October 12, 2023\)](#)
 - 2021 Review of Levy Expenditures (meeting minutes): [Meeting 4 \(November 9, 2022\)](#)
 - 2020 Review of Levy Expenditures (meeting minutes): [Meeting 4 \(October 26, 2021\)](#)
-
- **What is the plan going forward to increase access to these venues? How can we better address equitable access to these venues? What information do you have on this?**

The future King County Parks Levy will support the Aquarium’s existing efforts to address equitable access through environmental education with an emphasis on accessibility to traditionally underserved areas and communities including people with disabilities. More detailed information about these existing programs and activities can be found in the most recent annual report. Current versus estimated data of future visitors provided by the Seattle Aquarium is summarized below.

Annual numbers	Current	2026 and beyond
Budget	\$30 million	\$45 million
Attendance	800,000	1.2 million
School Groups	40,000 students	60,000+ students
School scholarships/discounts	20,000; value \$100,000	40,000+; value \$150,000
Free community tickets (distributed through 500+ community partners)	80,000+ distributed (\$960,000 value of tickets redeemed)	120,000+ distributed; \$1.4 mill. value of tickets redeemed
Discounts for seniors, tribal members, military, WIC/EBT card holders, etc.	\$700,000+ in reduced admission costs	\$1 million+ in reduced admission costs
Community program/admission tickets	24,000 tickets; \$700,000+ value	36,000+ tickets; \$1 million+ value
Summer camp attendees and scholarships	350 campers; \$10,000+ scholarships	500+ campers; \$15,000+ scholarships

- **Please provide more detail about what current levy money has been spent on and what proposed levy money would be spent on (for example, zoo annual reports).**

The current levy provided \$8 million towards the construction of the Ocean Pavilion which opened to the public in August 2024. Below is a detailed summary of levy proceeds that were used by the Aquarium in the most recent annual report (reference documents are attached, “Ocean Pavilion 2023 Financial Report - revised - 06.20.2024.pdf” and “King County Parks levy letter for 2023 OP expenditures.pdf”).

Seattle Aquarium
Ocean Pavilion Design & Construction
Expansion Costs and Uses, Summarized
As of 12/31/2023

Sources	Activity Through 12/31/2022	2023 YTD Activity	Ocean Pavilion Total to Date
Contributions	47,495,844	14,755,903	62,251,747
King County Parks Levy	5,950,657	2,049,344	8,000,001
Bank Financing		48,941,846	48,941,846
City Financing	5,218,095	(5,218,095)	-
Government Funds	3,813,000	4,049,999	7,862,999
Temporary Use of Unrestricted Reserves	-	344,019	344,019
Pending City of Seattle Reimbursement	0	-	0
City Funding Rec'd	29,907,228	-	29,907,228
Total Sources	92,384,825	64,923,016	157,307,841

Ocean Pavilion Uses

Hard Costs			
Construction & Construction Exp	57,358,004	59,337,852	116,695,856
FFE	-	453,295	453,295
1% for Art	69,835	126,680	196,515
Soft Costs			
External Project Management	2,774,543	599,756	3,374,299
Architecture, Engineering, & Exhibits	13,902,303	1,750,083	15,652,386
Permits, Fees & Entitlements	1,340,105	672,767	2,012,872
Sitework, Testing & Inspection	1,637	239,289	240,926
Insurance & Bond	58,617	272,536	331,153
Geotechnical Investigations	470,646	6,327	476,973
Commissioning	149,340	54,197	203,537
Additional Consultants	528,479	16,390	544,869
Direct project costs	76,653,509	63,529,172	140,182,681
Internal Project Management Costs	1,902,604	325,750	2,228,354
Media Content	629,774	513,384	1,143,158
External Consultants	534,108	60,092	594,200
Animal Acquisition / Life Science	1,170,888	541,315	1,712,203
Financing	-	1,686,064	1,686,064
Fundraising Costs	1,245,750	300,908	1,546,658
Owner's costs	5,483,124	3,427,512	8,910,636
Total Ocean Pavilion Uses	82,136,633	66,956,684	149,093,317
Animal Care Center Uses	8,214,525	-	8,214,525
Surplus / (Deficiency)	2,033,668	(2,033,668)	0

The proposed King County Parks Levy will change the Aquarium's levy commitment from capital projects to supporting the Aquarium's existing efforts towards environmental education with an emphasis on accessibility to traditionally underserved areas and communities including people with disabilities, maintenance of buildings and grounds, conservation of threatened species, and development of conservation and education strategies to mitigate impacts to animals and habitats from climate change.

Please provide more information on who is using the programs and how aware they are of them. What visitor/usage data do you have? Where do the users come from?

More detailed information about where users come from can be found in the most recent annual report and information provided above.