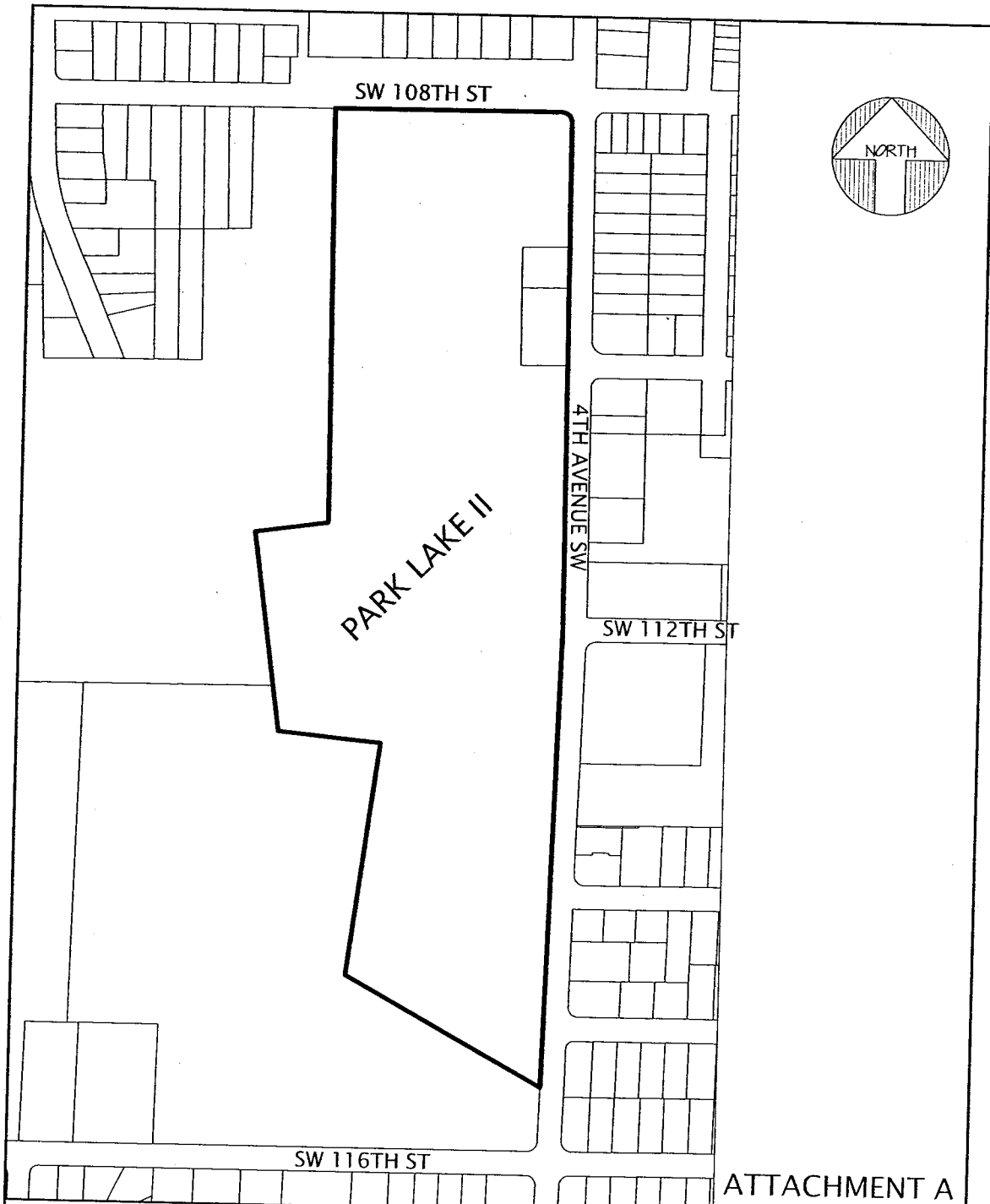


16099



<p>GOLDSMITH & ASSOCIATES INC. Engineering - Land Use Planning - Surveying</p> <p>P.O. Box 3565, Bellevue, WA 98009 (425) 462-1080 FAX: (425) 462-7719</p>	KING COUNTY HOUSING AUTHORITY		06710
	<p>PROPOSED PARK LAKE II</p>		
SCALE: N.T.S.	APR:	BY:	
PSSF:	DATE:		
DWG: 06710E12.dwg RNIX 03/04/08 13:19		KING COUNTY	WASHINGTON
M:\ACAD\PLAN\06\06710\06710E12.dwg			