



4Culture 2024 Annual Report

COMMITTEE OF THE WHOLE | AUG 2025



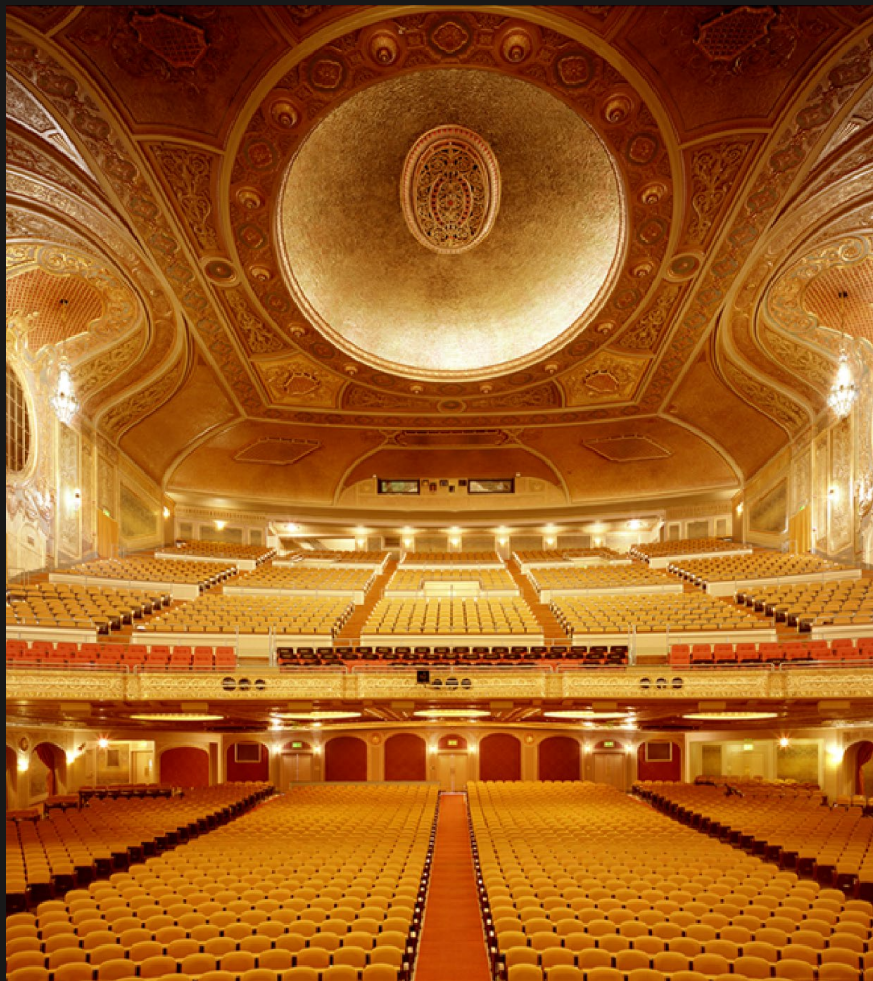
Briefing Topics

1. 2024 Annual Report
2. 2026-2027 Budget Framework
3. Doors Open Evaluation Framework
4. 2025: Unlocked by Doors Open



Artist-led wild clay workshop at Atmospheric River Garden by Vaughn Bell, 2024. 21 Acres, Woodinville. Photo: Timothy Aguero Photography

2024 Annual Report: At-A-Glance



Interior of Paramount Theatre. Photo courtesy of the Seattle Theatre Group.

- 1,994 applications, 1,701 awards, across 8 programs – supporting Arts, Heritage, Historic Preservation and Science + Technology
- Poetry in Public at King County Metro South Annex Base and on buses
- Doors Open programs: Sustained Support and Doors Open Cultural Facilities programs
- Doors Open Implementation Plan development and approval
- Preparing for full Doors Open rollout in 2025

2024 Financial Snapshot

FINANCIAL TOTALS	2022	2023	2024
Total Revenues	\$21,398,445	\$21,180,481	\$92,603,440
Total Expenditures	\$19,231,877	\$16,124,769	\$21,560,750
Total Fund Balances	\$36,721,258	\$41,776,970	\$112,819,660

Total revenues and expenditures differ on an annual basis due to timing factors in the inflows and outflows of the various programs' financial resources.

2024 Arts Highlights

- \$2.7 million awarded through Cultural Producers Recovery Fund (ARPA funding)
- Program provided unrestricted grants between \$1,000 to \$6,000 to artists and heritage and preservation professionals rebuilding from the pandemic
- 880 applications! More than half of applicants were first time applicants to 4Culture



2024 Heritage Highlights

- Burke Museum received a grant to restore two pieces of Samoan Siapo or bark cloth
- With the funds, the Burke was able to hire a tapa maker to restore the pieces using traditional techniques and share their knowledge with staff, guests, and visitors



Samoan Siapo in conservation, 2024. Photo courtesy of the Burke Museum.

2024 Historic Preservation Highlights

- 4Culture's supported the 2024 National APIAHiP Forum in Seattle
- Four-day event centered in Seattle's CID with excursions to Vashon Island, Bainbridge Island, and the White River Valley
- 230 attendees from 28 states and Canada



Forum attendees outside the Wing Luke Museum, 2024. Photo courtesy of Asian and Pacific Islander Americans in Historic Preservation.

2024 Science + Technology Highlights

Thanks to Doors Open, 4Culture provides operating support for Science and Technology educational programming!

- 23 applicants; 22 awards
- \$2.67 million in funding



A community led art project had 48 members of the community (aged 4-64) paint fish on the spawning shed doors during Salmon on Sunset, 2024. Photo by Friends of the Issaquah Salmon Hatchery.

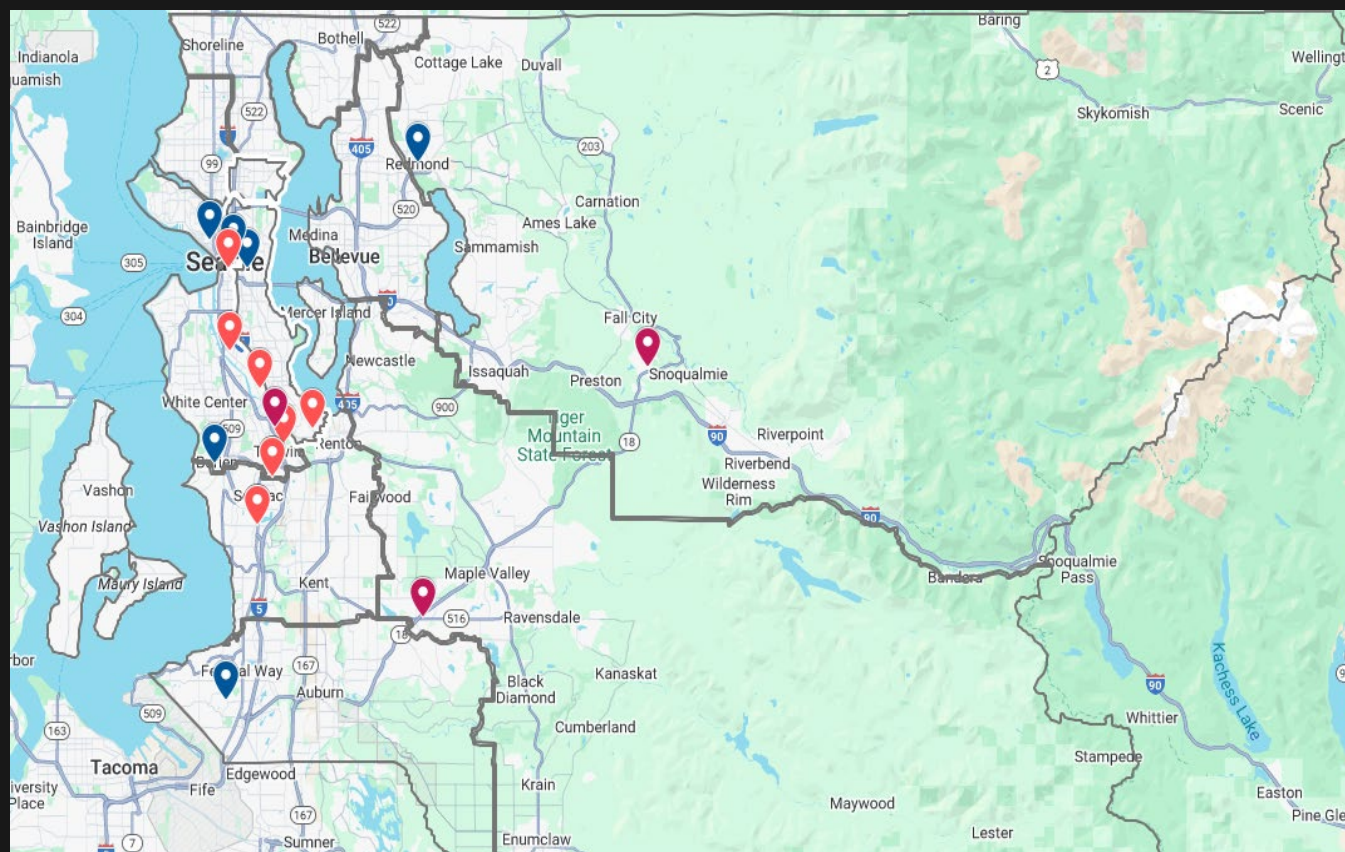
2024 Public Art Highlights



Tommy Segundo (Haida/Katzie) and Toka Valu (Tongan). *Return on Investments*, 2024. Powder coated aluminum. King County International Airport, Seattle, WA. King County Public Art Collection. Photo: joefreemanjunior.com

Outreach and Engagement

- Four (4) Doors Open Webinars with >960 attendees
- Hello 4Culture returned!
 - Skyway
 - Tukwila
 - SeaTac
 - Federal Way
 - Lake Forest Park
- Fifteen (15) grant workshops with >390 attendees



Map of 4Culture in-person Hello4Culture, Grant Workshop, and Listening Session events in 2024.

Measuring What We Value

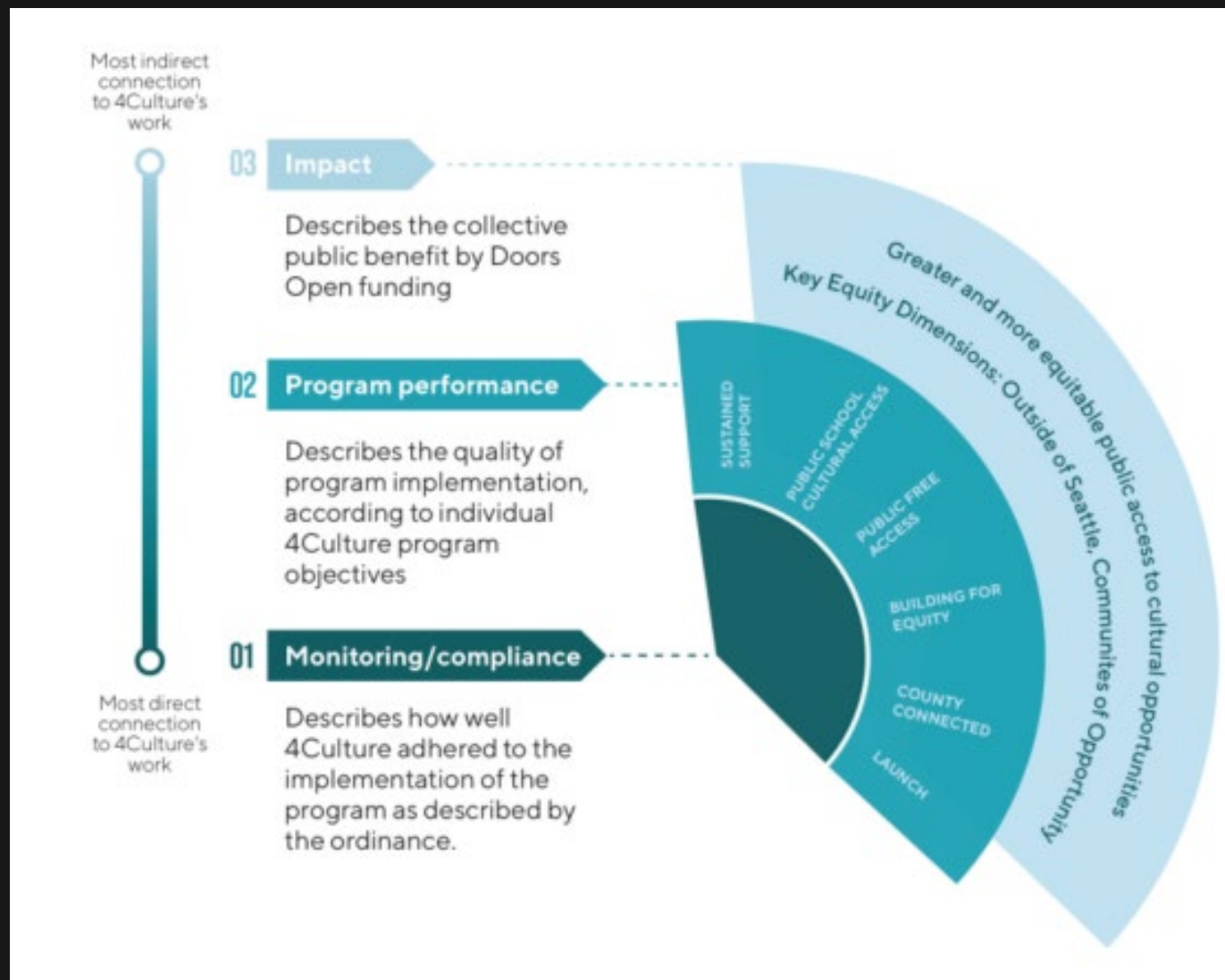


4Culture tabling at the SeaTac Farmers Market, Summer 2024. Photo by Timothy Aguero Photography

Evaluation Principals:

- Evaluation activities support the responsible management of public funds
- Evaluation activities balance respondent burden with the need to collect data and account for public funds. Attend to equity by matching evaluation requests to respondent capacity.
- Work to develop evaluation capacity across the sector
- Seek opportunities to benefit data providers with technical assistance, compensation for participation, and sharing back results.

Doors Open Evaluation Framework



There are three (3) levels of metrics that support our ability to collect and measure the impact of the Doors Open program:

- Monitoring & Compliance
- Program Performance
- Public Benefit Impact

Doors Open Evaluation Framework & Plan

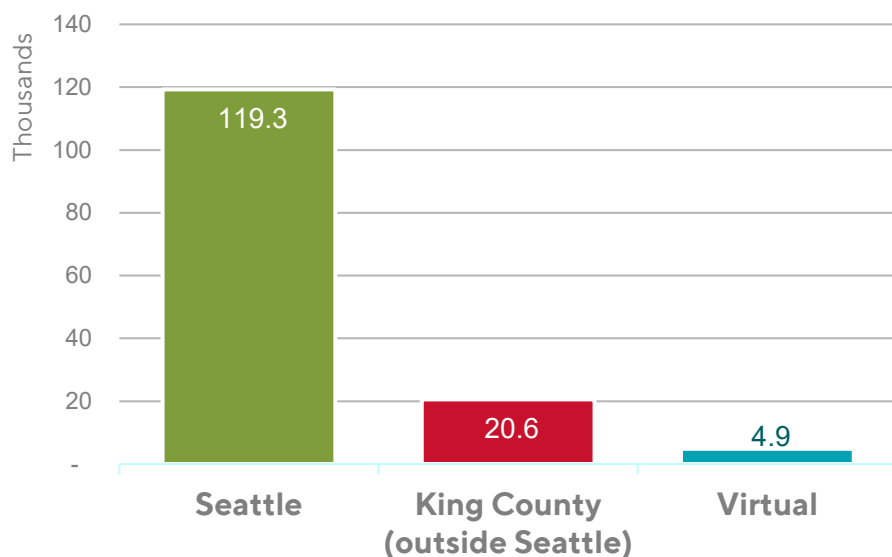


- User Group Testing on data collection tools
- Advisory Committees
- Local Arts Agency Network, representing 27 cities in King County
- October Public Issues Committee meeting for Sound Cities Association
- Executive's Office
- Shared with Board for feedback

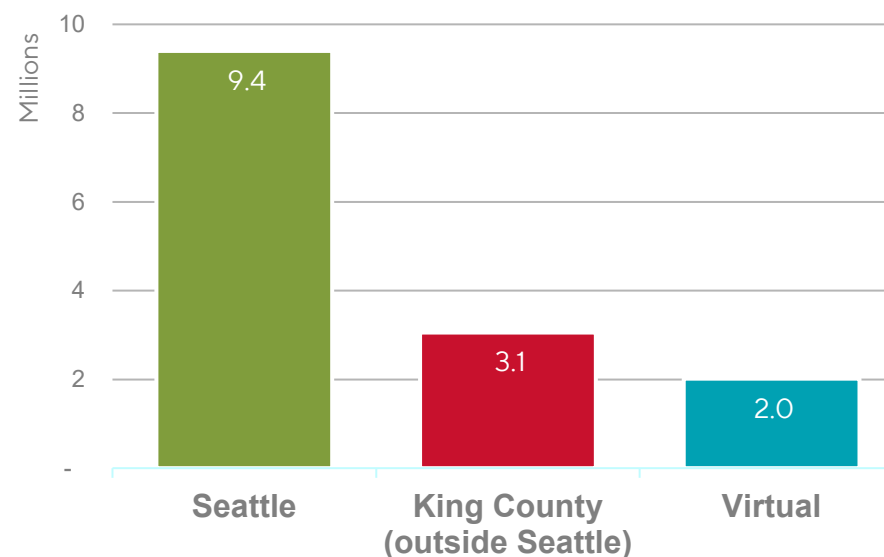
2024 Sustained Support Baseline

In 2024, Sustained Support grantees hosted an estimated 144,715 events with a combined attendance of at least 14.5 million. Most events are hosted in Seattle, but attendees come from across the county.

Total Events: 144,715



Total Attendance: 14,473,663



Notes: Preliminary baseline reflects 89% response rate as of 7-29-25; Additional events and attendance (not shown) may be held outside King County.

4Culture 2024 Grantees

The cohort of grantees from the first year of Doors Open funding (Facilities, Sustained Support) represent:

608 Unique non-profit organizations

~\$776 MILLION In organizational expenditures

Source: 4Culture (2025)

Notes: Orgs may receive one or both Sustained Support grants and Doors Open Facilities grants. Does not include lodging tax funded Sustained Support. Expenditures sourced from tax years (2022-24)

Doors Open Economic Impact

Investment in Arts and Culture is high leverage, each dollar invested generating more total economic impact and jobs than many larger industries, in large part because **our grantees buy local**.

EVERY \$1.00 OF INVESTMENT = \$1.73 TOTAL OUTPUT IN ARTS RECREATION & ENTERTAINMENT

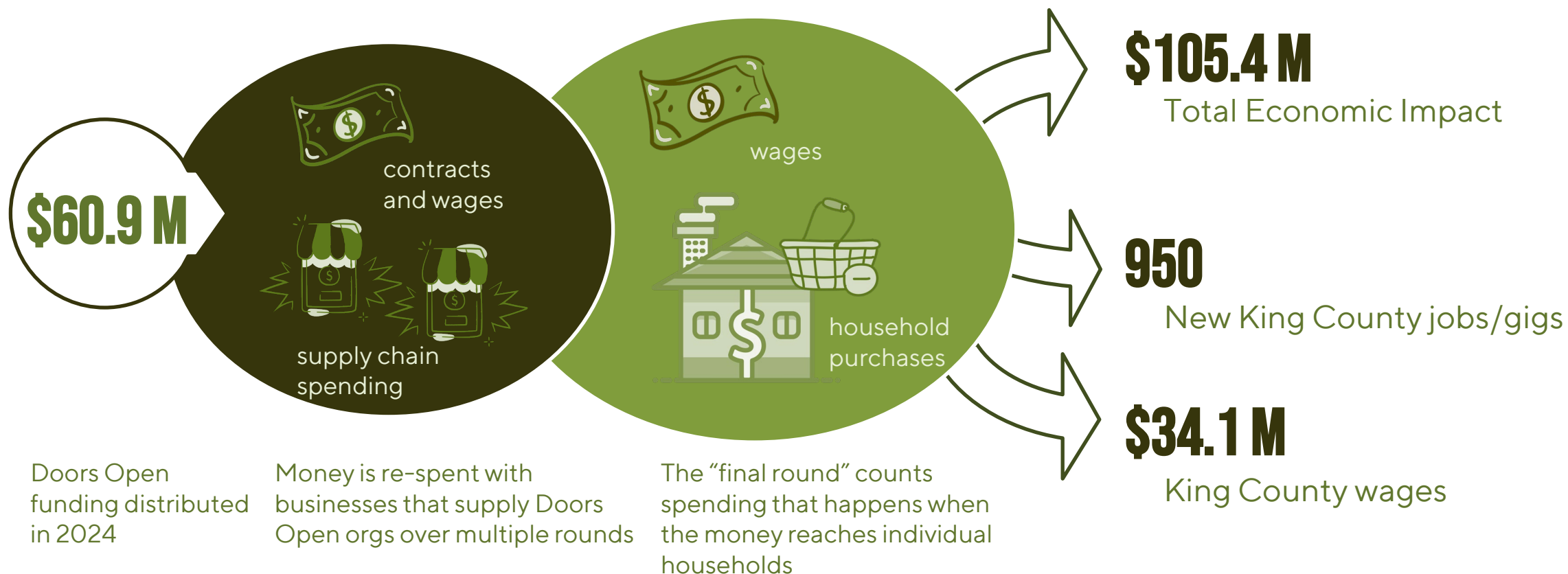
\$1.69 in Data Processing and IT
\$1.54 in Construction
\$1.50 in Air Transportation

EVERY \$100,000 OF INVESTMENT = 1.56 JOBS IN ARTS RECREATION & ENTERTAINMENT

0.42 in Data Processing and IT
0.37 in Construction
0.23 in Air Transportation

Doors Open Economic Impact

Economic Impact models allow us to estimate the change in the economy associated with “new dollars” like public investment into arts and culture.



Source: Bureau of Economic Analysis RIMS II, Seva Workshop

Notes: Funds for property acquisition excluded, orgs funded by lodging tax excluded, the RIMS II model does not specify a time frame for impacts



UNLOCKED
BY
DOORS
OPEN



CULTURE



Pacific Ballroom Dance, Auburn. Winter Concert "JOY", 2024

Increasing Accessibility

- In 2024 Doors Open Facilities funded 41 projects (48%) with project focus on ADA compliance and/or upgrade - totaling \$18.56 million
- ADA feature highlights include:
 - Gallery access and restroom at Kirkland Arts Center
 - Seating at Enumclaw Expo Arena
 - Doors at Highline Heritage Museum
 - Doors and ramp at Snoqualmie Valley Historical Museum
 - Wheelchair lift at Jack Straw Recording Studio
 - Ramp and parking at Mukai Farm
 - Sensory noise reduction at Seattle Children's Museum



Photo credit: Jason Tang Caption: Ross Showalter and Sara Nović, two Deaf authors, sat down for one-on-one conversation front of an audience during Deaf Lit Fest 2024 at Hugo House.

Disability and Accessibility

- In 2024, nearly 25% of applicants to 4Culture's funding programs for individuals identified as living with a disability. In King County, the disability rate for adults is 10%.
- Individuals living with disabilities made up 23% of awards in 2024.
- To date in 2025, 20% of awards for individuals funding programs have gone to artists and cultural practitioners who identify as living with a disability.



Northwest Pops Orchestra - Special Inaugural Concert at Aljoya Mercer Island, July 11, 2024. Photo by Alabastro Photography.

Doors Open in Cities, Suburbs, and Rural King County

- 4Culture surpassed the 25% goal to funding outside of Seattle
- Funding totaled \$9 million and was 27% of total Doors Open Sustained Support
- 35% of organizations awarded Sustained Support were located and serving outside of Seattle
 - Outside Seattle based organizations: 209 applicants; 206 awards
 - Seattle based organizations: 387 applicants; 380 awards
 - All organizations are King County serving



SpringFest in Bellevue, Crossroads Park. Photo courtesy of Theatre 33.

Supporting Small Organizations

Network of Support

- Online resource library and consultant directory
- Sustained Support, Launch, and Building for Equity organizations qualify for free services
 - Coaching and mentoring
 - Communities of practice
 - Consultant services



Japan Fair, 2025 at Meydenbauer Center, Bellevue. Photo: Timothy Agüero Photography.

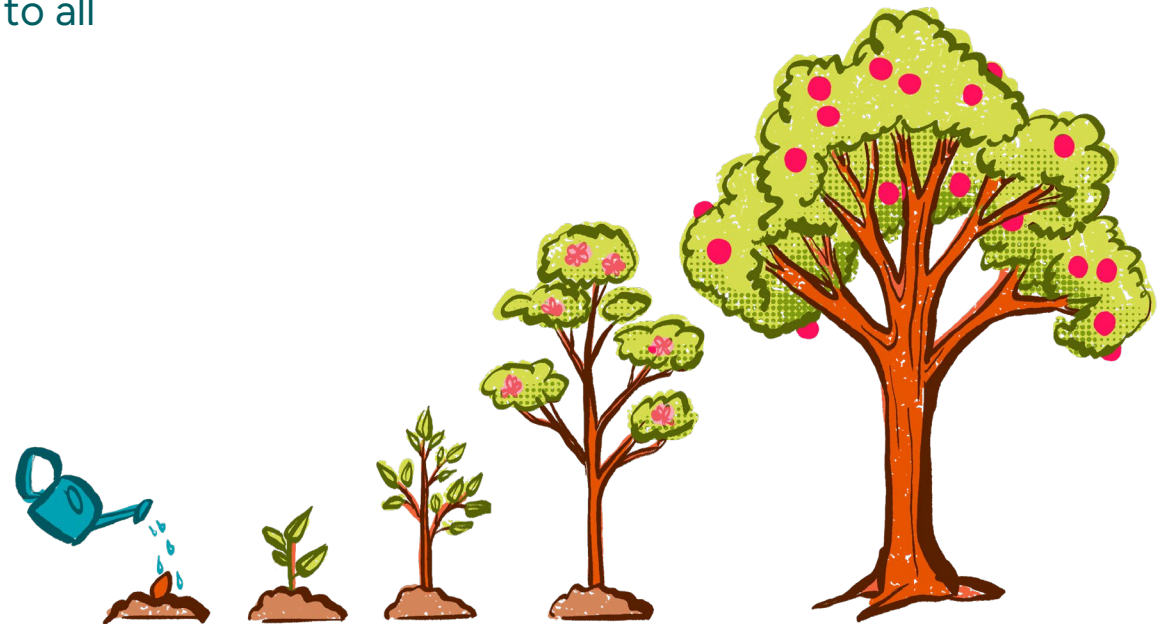
Emerging, New, and New-to-4Culture Organizations

Launch launched! Doors Open program designed to support new and emerging organizations

- Deadline tomorrow, Aug 27
- Lunch & Learn events throughout summer, open to all
 - Intro to Board Development
 - Introduction to Grant Writing
 - Hiring Your First Staff Member

New to 4Culture:

- Diwa Filipino Film Festival (Des Moines)
- Seattle Chinese Cultural Theater (Bellevue)
- Songs of Black Folk (Renton)
- Woodinville Pride (Woodinville)
- Drama Tops (Seattle)
- Shift Gallery (Seattle)



Curiosity Pass Funding Program

Application scheduled to open Sept. 9 and close Oct. 21



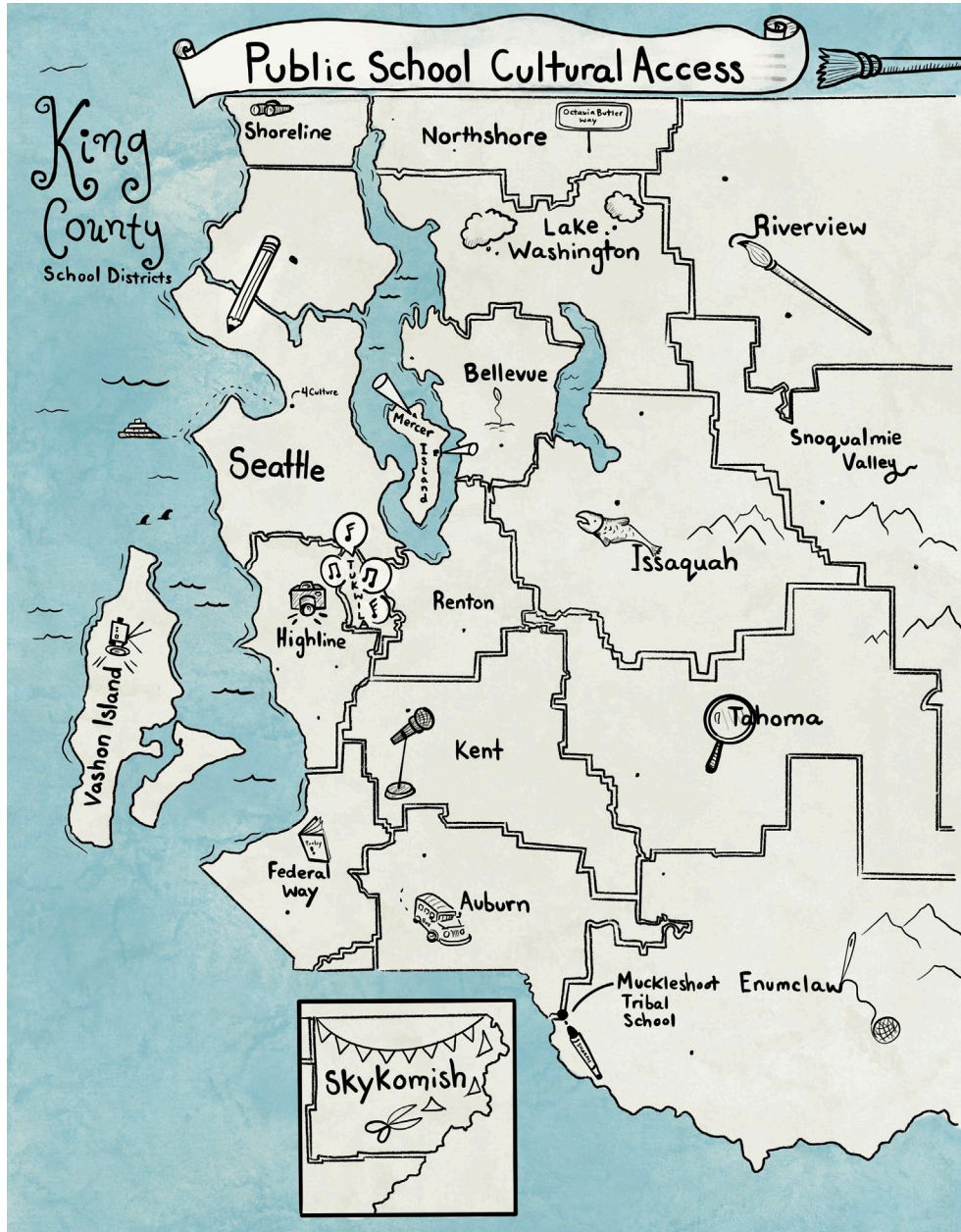
What is it?

- A competitive funding program that will expand and improve access to cultural education experiences across heritage, science, historic preservation, and arts disciplines for students in King County's 19 public school districts and tribal schools.



Who is it for?

- King County science, arts, heritage, and preservation cultural organizations and individual community-based educators that provide education programs to K-12 public school students.



Who Benefits: King County K-12 Public School Students

- 19 School Districts + Muckleshoot Tribal School
- 500 Schools
- 286,000 students
- Districts are urban, suburban, and rural
- Districts range in size from 2 schools to 104 schools

Thank you, Executive Braddock and King County Council!

